



STANDARD HILL / EYE HILL  
**CONNECTION**  
Bull & Commercial Female Sale  *March 7th, 2025*

1 PM MST, Standard Hill Livestock, Maidstone, SK

[www.shlivestock.com](http://www.shlivestock.com)



# FRIDAY, MARCH 7, 2025

1 PM MST (ALTA TIME)

@ STANDARD HILL LIVESTOCK

## 15TH ANNUAL SALE OFFERING

BLACK ANGUS YEARLINGS	18
TWO YEAR OLDS	12
ANGUS x HEREFORD F1 TWOS	1
POLLED HEREFORD YEARLINGS	10
TWO YEAR OLDS	8
RED ANGUS YEARLINGS	15
COMMERCIAL OPEN HEIFERS	34

98 head

### PRESENTED BY

Standard Hill Livestock & Eye Hill Stock Farm

Stephen & Christine Myer  
Box 227 Maidstone, SK  
S0M 1M0

Stephen) 306-893-8414  
standard.hill@live.ca  
shlivestock.com

Black Angus (Lots 1-25)  
Hybrid Bull (Lot 26)  
Polled Herefords (Lots 27-44)

Brennan Schachtel  
Box 65 Marshall, SK  
S0M 1R0

Brennan) 306-821-2504  
eyehillb@gmail.com  
Red Angus (Lots 50-65)

with Guests

MG Angus

Michael & Jeanette Gerlinsky  
Box 2765 Lloydminster, SK  
S9V 0Z1

Mike) 306-821-6446  
mgangus1@gmail.com  
Black Angus (Lots 45-49)

### Map



### Directions

From Lloydminster:

- 28 miles East on Highway 303
- 6 miles East on Township 500
- 1 mile South on Range Rd 3223
- 1.5 miles East on Township 495

From Maidstone:

- 6 miles North on Highway 21
- 6 miles East on Township 490
- 5 miles North on Range Rd 3223
- 1.5 miles East on Township 495

STANDARD HILL / EYE HILL  
**CONNECTION**  
Bull & Commercial Female Sale   
March 7th, 2025

*STAFF/SALE DAY PHONES*

Ryan Hurlburt, Auctioneer	306-292-9812
Jim Pulyk, Ringman	780-787-0646
Travis Bygrove, Ringman	780-205-6008
Shane Castle, Castlerock	306-741-7485
Mark Forsyth, Castlerock	306-784-7544
Stephen Myer	306-893-8414
Michael Gerlinsky	306-821-6446
Brennan Schachtel	306-821-2504
Larry Toner, Stockmens Ins.	306-834-7652

Internet Bidding Available

**DLMS**  
*www.dlms.ca*

For more information call DLMS:  
Mark Shologan 780.699.5082 or  
DLMS Purebred Team 780.991.3025

*VIEW CATALOGUE & VIDEOS ONLINE*  
*shlivestock.com buyagro.com dlms.ca*

*WELCOME FROM CASTLEROCK MARKETING*

An absolute pleasure to be working with three great operations that have been doing a bang up job in their breeding programs over the last number of years. This is evident in the quality of the bull pen again this year! Important herdbull acquisitions have catapulted the consistency of the calf crop making you the buyer the winner going forward. A beautiful day in August was instrumental in a successful open house displaying a tremendous set of calves of which many are on offer for the sale. The uniformity and payweight will up the ante in your herds making for higher quality calves to sell and, best of all, replacement females that make this world go round. Be sure to stop by Standard Hill ahead of the sale to look through the offering and have the opportunity to discuss on a one on one basis which bull(s) best fit your breeding program.

The cattle market is soaring and now is as good a time as any to make sure you secure genetics to keep you at the forefront of the industry.

Any questions regarding the offering feel welcome to reach out as we are here to help!

See you sale day!

*Shane Castle*

306-741-7485





**W**elcome everyone to our 15th annual sale. We are proud to work with Eye Hill Stock Farm and MG Angus once again this year. It's an exciting time to be in the beef industry as a primary producer. Returns on cull cattle and feeders have come up to the point where they need to be for awhile. It is a time to invest in cattle and into technology to improve our quality of life. The hard times make us strong and make the good times more enjoyable! The offering this year is one you will enjoy sorting.

Our policy of "never a better time to cull hard than the present" continues to pay dividends in the depth of our herd, and thus the bulls we have to offer. The cattle are managed for longevity and selected for eye appeal and functionality. We run two separate calving seasons with January and April time periods. Our January calvers are a select group of purebred individuals that produce the yearling bulls for this sale. Our April calving group consists of 95% purebred cows and some commercials which produce two-year old bulls and F1 heifers for sale, and a higher percentage of feeder animals.

We will be hosting an open house again this fall on the date of August 16th, 2025. A large number of our herd will be available to view within walking distance of our yard. I have always said August is the best time to look at the herd and I hope you can join us for a tour, steak, and visit at a warmer time!

This catalogue is a great guide of our offering and along with videos and all the other online tools you can get a pretty good idea of what we're up to. That being said I think you would appreciate the cattle even more in person so hopefully you can join us prior to or for the sale March 7th. Thank you to our past customers, your support means the world to us!

Stephen & Christine Myer, Jayce, Karli, Landen  
Maidstone, SK Stephen) 306-893-8414

[www.shlivestock.com](http://www.shlivestock.com)





**BLACK ANGUS REFERENCE SIRE** *~* **DURALTA 8020 INFERNO 42H** *~*

Inferno has given us alot to be excited about. He has 10 sons on offer in this year's sale, many are feature lots. Two of his daughters have sons in the sale. Both sexes of his offspring have his moderate frame, length of body, and eye appeal. The heifers look like cows early and the bulls crest up early and show high libido. His EPDs feature positive values in calving ease, birth weight, milk, and marbling. Sons have made up a large part of our show pens at Turtleford, Edam, Stockade Round Up, and Agribition the past two seasons. Owned with MG Angus



REF SIRE **WILBAR SOUTH POINT 114K**



114K had an impressive group of calves in 2024. He calved easy and passed on muscle, middle, and hair. Selected with MG Angus in 2023 for his soundness, completeness, and his Mayflower dam.

REF SIRE **STANDARD HILL SLATER 26K**



We retained an interest in 26K when he sold as our leadoff bull a few years back. His dam is a top end cow that has won the Turtleford Cattle Show multiple times. His progeny has extra growth.

**STANDARD HILL**  
YEARLING ANGUS BULLS

LOT 1



Full Brother of Lot 1



Dam

LOT 1

**STANDARD HILL BLAZER 34M**

TATTOO:  
SHL 34M

REG #:  
2374031

YEARLING  
BULL

MERIT MCLAREN 8020F  
S: DURALTA 8020 INFERNO 42H  
DURALTA 9C EMULATION 32F  
STANDARD HILL MAJOR 350C  
D: STANDARD HILL ANN 41H  
STANDARD HILL ANN 366E

BAR S RANGE BOSS 4002  
MERIT BLACKCLASS 6060D  
DURALTA SPRING FEVER 9C  
DURALTA 56S EMULATION 50U  
GVC SETTLER 004X  
STANDARD HILL LADY ANN 117X  
SCC BANDO 45A  
STANDARD HILL ANN 333A

Weights	Birth Feb 23	Weaning Aug 27	Yearling Dec 21
	84	680	1000
EPDs	CE 4.0	BW 1.1	WW 50 YW 90
	SC 0.82	MCE 7.0	MILK 31

Very promising individual here, albeit a little younger aged. This guy has been a favourite since a young age. He is wide based, thick muscled, deep ribbed, sound structured, long bodied, and masculine made. He has a ton of character. He was a member of our Agribition pen this past fall as was his full brother when we were top Black Angus pen in 2023. His dam brings some performance and udder quality.

Selling Half Semen Interest - Possession to be Negotiated

LOT 2



SHL 49L  
Maternal Brother  
to Lot 2

LOT 2

**STANDARD HILL SMOKY 49M**

MERIT MCLAREN 8020F  
S: DURALTA 8020 INFERNO 42H  
DURALTA 9C EMULATION 32F  
BELVIN DISPUTE 6125  
D: STANDARD HILL ANN 388F  
STANDARD HILL ANN 382C

BAR S RANGE BOSS 4002  
MERIT BLACKCLASS 6060D  
DURALTA SPRING FEVER 9C  
DURALTA 56S EMULATION 50U  
HF JUNCTION 18B  
BARBARA OF RING CREEK 65Y  
B P F SPECIAL FOCUS 504  
STANDARD HILL ANN 367A

TATTOO:  
SHL 49M  
REG #:  
2374028  
YEARLING  
BULL

Weights	Birth Jan 24	Weaning Aug 27	Yearling Dec 21
	72	755	1030

EPDs	CE 9.0	BW -1.6	WW 52	YW 90	SC 0.90	MCE 7.0	MILK 29
------	--------	---------	-------	-------	---------	---------	---------

Bonafide heifer bull. You will appreciate the thickness of this guy when you step behind him, he is strong topped and he carries muscle deep down his quarter. On the profile you can see he has an extra rib and is very clean and masculine. Another sound structured Inferno son. His dam has been producing top end calves since she started and has also won the Turtleford Cattle Show in the Mature British Division. This guy was a member of our Agribition bull pen last fall.

LOT 3



SHL 64L  
Maternal Brother  
to Lot 3

LOT 3

**STANDARD HILL FLINT 64M**

MERIT MCLAREN 8020F  
S: DURALTA 8020 INFERNO 42H  
DURALTA 9C EMULATION 32F  
STANDARD HILL MAJOR 350C  
D: STANDARD HILL ROXY 61H  
STANDARD HILL BEBE 327A

BAR S RANGE BOSS 4002  
MERIT BLACKCLASS 6060D  
DURALTA SPRING FEVER 9C  
DURALTA 56S EMULATION 50U  
GVC SETTLER 004X  
STANDARD HILL LADY ANN 117X  
STANDARD HILL YAHOO 68Y  
STANDARD HILL BLACKBIRD 9W

TATTOO:  
SHL 64M  
REG #:  
2374034  
YEARLING  
BULL

Weights	Birth Feb 13	Weaning Aug 27	Yearling Dec 21
	83	640	950

EPDs	CE 3.0	BW 0.8	WW 42	YW 81	SC 0.78	MCE 4.0	MILK 31
------	--------	--------	-------	-------	---------	---------	---------

Moderate framed bull with a ton of heart and rib. Our final member of the Agribition pen from last fall. This fella should be an option in the heifer pen. He has base width to burn and a decent amount of hair. He has a great skull and is very sound in structure. His maternal brother last year was a high seller. His dam has produced three very marketable bulls, all her production so far. She is a very attractive Major 350C daughter. Check out his 1/2 siblings, lots 1 and 45.

### STANDARD HILL SMOULDER 8M



MERIT MCLAREN 8020F  
 S: DURALTA 8020 INFERNO 42H  
 DURALTA 9C EMULATION 32F  
 DFCC 244B FLO RIDER 22F  
 D: STANDARD HILL RAVEN 1J  
 STANDARD HILL RAVEN 310C

BAR S RANGE BOSS 4002  
 MERIT BLACKCLASS 6060D  
 DURALTA SPRING FEVER 9C  
 DURALTA 56S EMULATION 50U  
 SIX MILE COMPLETE 2448  
 DFCC 9194 LIBBY 13Z  
 EARLY SUNSET FREEDOM 89U  
 STANDARD HILL BLACKBIRD 10U

Weights	Birth Feb 1	Weaning Aug 27	Yearling Dec 12
	76	700	1045
EPDs CE 9.0 BW -1.0 WW 37 YW 68 SC 1.03 MCE 11.0 MILK 35			



Very moderate calving ease bull with growth. This guy is a sale feature and will be easy to find sale day. He is attractive in his lines and very long bodied. He was the last cut to make our Agribition pen and all he's done is outgrow his selected brothers since then. His dam is a large capacity young cow and maternal sister to the dams of lots 45 and 46.

TATTOO: SHL 8M REG #: 2321782 YEARLING BULL

### STANDARD HILL CHARGER 82M



MERIT MCLAREN 8020F  
 S: DURALTA 8020 INFERNO 42H  
 DURALTA 9C EMULATION 32F  
 S A V FINAL ANSWER 0035  
 D: STANDARD HILL ANN 367A  
 STANDARD HILL LADY ANN 79Y

BAR S RANGE BOSS 4002  
 MERIT BLACKCLASS 6060D  
 DURALTA SPRING FEVER 9C  
 DURALTA 56S EMULATION 50U  
 SITZ TRAVELER 8180  
 S A V EMULOUS 8145  
 HF TIGER 5T  
 STANDARD HILL LADY ANN 28U

Weights	Birth Jan 12	Weaning Aug 27	Yearling Dec 12
	86	745	1105
EPDs CE 9.0 BW 0.0 WW 43 YW 79 SC 0.99 MCE 9.0 MILK 30			



Attractive made bull with some growth and maternal longevity in his pedigree. Full brother to last year's high selling bull. He and his dam were Reserve Champion British Mature Cow with bull calf at Turtleford last August. This guy is attractive and smooth with a medium size frame. He is large middled, muscular, and above average for testicle.

TATTOO: SHL 82M REG #: 2373631 YEARLING BULL

### STANDARD HILL CUMBUSTO 53M



MERIT MCLAREN 8020F  
 S: DURALTA 8020 INFERNO 42H  
 DURALTA 9C EMULATION 32F  
 SCC BANDO 45A  
 D: STANDARD HILL ANN 391F  
 STANDARD HILL ANN 490C

BAR S RANGE BOSS 4002  
 MERIT BLACKCLASS 6060D  
 DURALTA SPRING FEVER 9C  
 DURALTA 56S EMULATION 50U  
 LLB 1845 BANDO 502X  
 SCC PRIDE 31X  
 EARLY SUNSET FREEDOM 89U  
 STANDARD HILL LADY ANN 65

Weights	Birth Jan 18	Weaning Aug 27	Yearling Dec 12
	86	740	1080
EPDs CE 4.0 BW 0.7 WW 41 YW 75 SC 1.04 MCE 8.0 MILK 30			



Higher performance bull with tons of hair. 53M has the three dimensions covered; length, width, and depth. He's a stout muscled bull from a cow that has been a consistent producer. Last year her heifer was as heavy as the heaviest bull all the way to yearling weights. There is longevity in this cow line on both sides of the pedigree. A must see bull sale day.

TATTOO: SHL 53M REG #: 2374029 YEARLING BULL



LOT 7



SHL 88K  
Maternal Sib  
of Lot 7



SHL 49L  
Son of Maternal  
Sister of Lot 7

LOT 7

STANDARD HILL IGNITER 88M

MERIT MCLAREN 8020F  
S: DURALTA 8020 INFERNO 42H  
DURALTA 9C EMULATION 32F  
B P F SPECIAL FOCUS 504  
D: STANDARD HILL ANN 382C  
STANDARD HILL ANN 367A

BAR 5 RANGE BOSS 4002  
MERIT BLACKCLASS 6060D  
DURALTA SPRING FEVER 9C  
DURALTA 56S EMULATION 50U  
MYTTY IN FOCUS  
B P F BLACK CASH 341  
S A V FINAL ANSWER 0035  
STANDARD HILL LADY ANN 79Y

Weights	Birth Jan 20	Weaning Aug 27	Yearling Dec 21
	96	785	1165

EPDs	CE 6.0	BW 1.3	WW 50	YW 94	SC 1.12	MCE 8.0	MILK 32
------	--------	--------	-------	-------	---------	---------	---------

TATTOO:  
SHL 88M

REG #:  
2374026

YEARLING  
BULL

Performance cow bull with maternal prowess. Among his contemporaries, this guy was third heaviest at weaning, and second heaviest at yearling. Definitely our largest framed and most growth orientated Inferno son this year. He was a member of our pen of bulls exhibited at Edam Fall Fair last October. His dam is from one of our most prolific cow families, and is a maternal sibling to last year's high selling bull, who was also off our rising cow maker, Inferno 42H. Pretty cool cat.

LOT 8



STANDARD HILL SLATE 86M

BEAR CREEK STONEY 32F  
S: STANDARD HILL SLATER 26K  
STANDARD HILL ANN 356F  
LKR HOME RUN 27G  
D: STANDARD HILL ROSEANN 54J  
STANDARD HILL ANN 393E

MERIT STONEY CREEK 4023  
BEAR CREEK LASS 32Y  
STANDARD HILL BENGAL 479A  
STANDARD HILL LADY ANN 12Y  
BORDER BUTTE FEDERATION 224E  
FREYBURN LADY 1788  
STANDARD HILL BENGAL 308C  
STANDARD HILL ANN 497C

Weights	Birth Jan 17	Weaning Aug 27	Yearling Dec 12
	88	700	1060

EPDs	CE -2.0	BW 3.6	WW 52	YW 94	SC ---	MCE 6.0	MILK 21
------	---------	--------	-------	-------	--------	---------	---------



Growthy, hairy, big testicle bull with not too large of a birthweight. The first of our Slater 26K sons presented this year. As a group they possess more growth, more hair, and high libido. He is large bodied but smooth and sound structured. He does not lack muscle. His dam was 1500 lbs last fall after raising him, her second calf. She has loads of capacity.

TATTOO: SHL 86M REG #: 2374043 YEARLING BULL



**LOT 9 STANDARD HILL ROCKY 11M**

BEAR CREEK STONEY 32F  
 S: STANDARD HILL SLATER 26K  
 STANDARD HILL ANN 356F

BELVIN DISPUTE 6125  
 D: STANDARD HILL ANN 336G  
 STANDARD HILL ANN 350D

MERIT STONEY CREEK 4023  
 BEAR CREEK LASS 32Y  
 STANDARD HILL BENGAL 479A  
 STANDARD HILL LADY ANN 12Y

HF JUNCTION 188  
 BARBARA OF RING CREEK 65Y  
 MINBURN QUANTUM 55Y  
 STANDARD HILL LADY ANN 117X

Weights	Birth Jan 18	Weaning Aug 27	Yearling Dec 12
	90	810	1260
EPDs CE 0.0 BW 2.4 WW 62 YW 106 SC 0.81 MCE 6.0 MILK 28			



Highest performing yearling Black Angus bull in the sale this year. This guy was number one at weaning and yearling time while boasting the moderate birthweight of 90 lbs. He will calve easy on cows and promises to be a good breeder. He was a member of our pen at Edam this past fall. His dam comes from the same cow family as our Major 350C sire. A lotta bull here.

TATTOO: SHL 11M REG #: 2374024 YEARLING BULL



**LOT 10**



**LOT 10 STANDARD HILL STONE 10M**

BEAR CREEK STONEY 32F  
 S: STANDARD HILL SLATER 26K  
 STANDARD HILL ANN 356F

DFCC 244B FLO RIDER 22F  
 D: STANDARD HILL ANN 11J  
 STANDARD HILL ANN 336G

MERIT STONEY CREEK 4023  
 BEAR CREEK LASS 32Y  
 STANDARD HILL BENGAL 479A  
 STANDARD HILL LADY ANN 12Y

SIX MILE COMPLETE 2448  
 DFCC 9194 LIBBY 13Z  
 BELVIN DISPUTE 6125  
 STANDARD HILL ANN 350D

Weights	Birth Jan 23	Weaning Aug 27	Yearling Dec 21
	80	800	1150
EPDs CE 5.0 BW 0.9 WW 62 YW 106 SC --- MCE 9.0 MILK 29			



TATTOO:  
 SHL 10M

REG #:  
 2374040

YEARLING  
 BULL

Curve bender...what everyone is looking for. This guy went from a calve easy 80 lbs birthweight to second heaviest at weaning and third heaviest at yearling times. His dam is a maternal brother to lot 9, who was the heaviest at weaning and yearling. This guy was the third member of our pen that was at Edam Fall Fair last October. Thick haired and large testicled. He is a culmination of some of our top cow lines, keep every female from the heifer and cow pastures.

SHL 356F - Paternal Grand Dam  
 of Lots 8, 9, 10, and 15

LOT 11



LOT 11 STANDARD HILL WAYFINDER 73M

CONLEY SOUTH POINT 8362  
 S: WILBAR SOUTH POINT 114K  
 WILBAR MAYFLOWER 805H  
 DURALTA 8020 INFERNO 42H  
 D: STANDARD HILL ELBA 66K  
 STANDARD HILL ELBA 63H

STEVENSON TURNING POINT  
 P R LADY 909 4200-587  
 WILBAR TIGERSHARK 420Y  
 WILBAR MAYFLOWER 48Z  
 MERIT MCLAREN 8020F  
 DURALTA 9C EMULATION 32F  
 BELVIN DISPUTE 6125  
 STANDARD HILL ELBA 360B

Weights	Birth Jan 19	Weaning Aug 27	Yearling Dec 21
	70	710	1040

EPDs CE 7.0 BW 0.6 WW 50 YW 79 SC --- MCE 6.0 MILK 28

TATTOO:  
SHL 73M

REG #:  
2374053

YEARLING  
BULL

I think this guy has curve bender potential. A heifer's first calf that projects to be near the top at weaning and yearling when adjusting for dam age. Another great production for Jayce from his Elba cow family. The pair of them were champions at Turtleford Summer Cattle Show last August in the British Two-Year-Old Bull Calf Pair division. The South Point bulls have really come on after they hit feed. Tons of middle, hair, and muscle in this guy. Will work on heifers or cows.



Full Sibling of Paternal Grand Dam of Lots 11-14

LOT 12 STANDARD HILL BOOM 14M

CONLEY SOUTH POINT 8362  
 S: WILBAR SOUTH POINT 114K  
 WILBAR MAYFLOWER 805H  
 DURALTA 8020 INFERNO 42H  
 D: STANDARD HILL SIZZLE 4K  
 STANDARD HILL ANN 304G

STEVENSON TURNING POINT  
 P R LADY 909 4200-587  
 WILBAR TIGERSHARK 420Y  
 WILBAR MAYFLOWER 48Z  
 MERIT MCLAREN 8020F  
 DURALTA 9C EMULATION 32F  
 BELVIN DISPUTE 6125  
 STANDARD HILL ANN 314C

Weights	Birth Feb 6	Weaning Aug 27	Yearling Dec 12
	76	640	995

EPDs CE 7.0 BW 0.8 WW 47 YW 77 SC --- MCE 6.0 MILK 27



Great option for heifers. This South Point son was light at birth and is super clean fronted and smooth bodied. Off of a first calf, Inferno 42H, heifer himself he should be a sleep easy option. He is moderate in frame but has a lot of expression of rib, and is well muscled in the rear quarter. He is sound structured and large hipped.

TATTOO: SHL 14M REG #: 2374066 YEARLING BULL

**LOT 13 STANDARD HILL NAVIGATOR 9M**



CONLEY SOUTH POINT 8362  
 S: WILBAR SOUTH POINT 114K  
 WILBAR MAYFLOWER 805H  
 DFCC 244B FLO RIDER 22F  
 D: STANDARD HILL ROXY 2K  
 STANDARD HILL ROXY 307F

STEVENSON TURNING POINT  
 P R LADY 909 4200-587  
 WILBAR TIGERSHARK 420Y  
 WILBAR MAYFLOWER 48Z  
 SIX MILE COMPLETE 244B  
 DFCC 9194 LIBBY 13Z  
 STANDARD HILL BENGAL 479A  
 STANDARD HILL BEBE 327B

Weights	Birth	Jan 16	Weaning	Aug 27	Yearling	Dec 12
	64		670		1030	

EPDs CE --- BW --- WW -- YW -- SC --- MCE --- MILK --



Sleep easy heifer bull with eye appeal. This guy should calve heifers all day while still possessing muscle and middle like all his South Point brothers. He has character and style, a good skull and crest, and smooth lines. His first calver momma has small teats and a very level udder. Her full sib is a smoker in the April bull pen. Sells without papers due to white spot.

TATTOO: SHL 9M REG #: ----- YEARLING BULL

**LOT 14 STANDARD HILL SOUTHERNER 36M**



CONLEY SOUTH POINT 8362  
 S: WILBAR SOUTH POINT 114K  
 WILBAR MAYFLOWER 805H  
 DFCC 244B FLO RIDER 22F  
 D: STANDARD HILL PRIDE 17K  
 STANDARD HILL PRIDE 338E

STEVENSON TURNING POINT  
 P R LADY 909 4200-587  
 WILBAR TIGERSHARK 420Y  
 WILBAR MAYFLOWER 48Z  
 SIX MILE COMPLETE 244B  
 DFCC 9194 LIBBY 13Z  
 SCC BANDO 45A  
 STANDARD HILL PRIDE 15X

Weights	Birth	Jan 30	Weaning	Aug 27	Yearling	Dec 12
	77		675		1000	

EPDs CE 7.0 BW 1.2 WW 54 YW 87 SC --- MCE 7.0 MILK 27



Another calving ease South Point calf with some substance. These guys are very consistent. This guy is a 1/4 sibling to lot 13. His dam is a derivative of our Pride cow family, all from Pride 15X. 15X was one tank of a cow and her daughter, 338E pictured, has been a great producer. I'd be more than happy to show you our Pride's in the yearling heifer pen. Gets me excited.

TATTOO: SHL 36M REG #: 2374046 YEARLING BULL

**LOT 15 STANDARD HILL STONEY 29M**



BEAR CREEK STONEY 32F  
 S: STANDARD HILL SLATER 26K  
 STANDARD HILL ANN 356F  
 LKR HOME RUN 27G  
 D: STANDARD HILL ANN 14K  
 STANDARD HILL ANN 336F

MERIT STONEY CREEK 4023  
 BEAR CREEK LASS 32Y  
 STANDARD HILL BENGAL 479A  
 STANDARD HILL LADY ANN 12Y  
 BORDER BUTTE FEDERATION 224E  
 FREYBURN LADY 178B  
 SCC BANDO 45A  
 STANDARD HILL ANN 350D

Weights	Birth	Jan 11	Weaning	Aug 27	Yearling	Dec 12
	72		685		1000	

EPDs CE 3.0 BW 2.0 WW 54 YW 95 SC --- MCE 9.0 MILK 23



Another good option for heifers. Stoney 29M is very smooth and stylish and when you get behind him you find he has some substance as well. He is extremely long bodied. His young dam is a member of our Ann cow family; its our largest and produced our Major 350C herdsire. 29M is a 1/4 sibling to lot 8.

TATTOO: SHL 29M REG #: 2373629 YEARLING BULL

**STANDARD HILL**  
2 YEAR OLD ANGUS BULLS

**LOT 16**



Sire of Lots 16-18 2-year olds

**LOT 16 STANDARD HILL IGNITER 93L**

MERIT MCLAREN 8020F  
 S: DURALTA 8020 INFERNO 42H  
 DURALTA 9C EMULATION 32F  
 DFCC 244B FLO RIDER 22F  
 D: STANDARD HILL ROXY 97J  
 STANDARD HILL ROXY 845C

BAR 5 RANGE BOSS 4002  
 MERIT BLACKCLASS 6060D  
 DURALTA SPRING FEVER 9C  
 DURALTA 56S EMULATION 50U  
 SIX MILE COMPLETE 244B  
 DFCC 9194 LIBBY 13Z  
 SCC BANDO 45A  
 STANDARD HILL BLACKBIRD 6Y

Weights	Birth Apr 14	Weaning Oct 8	Yearling Mar 20
	85	615	1125

EPDs CE 3.0 BW 1.6 WW 50 YW 94 SC 2.31 MCE 5.0 MILK 31

TATTOO: SHL 93L  
 REG #: 2321812  
 2-YEAR OLD BULL

This guy has been all bull for quite awhile, with early maturity and bull character. People who saw him last spring said he could have sold then, but we've grown him out and he's ready to cover some cows. He is smooth made, long bodied, muscular, and has a great skull. His dam is a moderate, square made cow with a quality udder. 93L has a lot of high maternal cows in his pedigree. December 29th weight - 1535. **RETAINING IN HERD SEMEN USE**



TATTOO: SHL 31L REG #: 2321804 2-YEAR OLD BULL

**LOT 17 STANDARD HILL BLAZER 31L**

MERIT MCLAREN 8020F  
 S: DURALTA 8020 INFERNO 42H  
 DURALTA 9C EMULATION 32F  
 STANDARD HILL BENGAL 479A  
 D: STANDARD HILL ROXY 30J  
 STANDARD HILL ROXY 361F

BAR 5 RANGE BOSS 4002  
 MERIT BLACKCLASS 6060D  
 DURALTA SPRING FEVER 9C  
 DURALTA 56S EMULATION 50U  
 HF TIGER 5T  
 STANDARD HILL LADY ANN 23P  
 STANDARD HILL MOJAR 350C  
 STANDARD HILL BEBE 327A

Weights	Birth Apr 6	Weaning Oct 8	Yearling Mar 20
	61	555	1060

EPDs CE 12.0 BW -2.6 WW 32 YW 67 SC 0.98 MCE 10.0 MILK 27

479A

Great option for heifers. A calving ease Inferno 42H son that is moderate framed. He could be a perennial option in the heifer pen. He is clean fronted and sheathed, smooth bodied and well extended skeletally. December 29th wt - 1550.

REF SIRE **DFCC 244B FLO RIDER 22F**



Flo Rider walked here for many years, always staying sound and getting his job done. His progeny total is just over 120 and he has merit in calving ease, birth weight, scrotal size, milk, and body dimension.

REF SIRE **STANDARD HILL DISPUTE 56H**



We used 56H for a year before capitalizing on an opportunity to sell him commercially. He is a maternal sib to the beautiful 356F cow. His few daughters we have coming along make me think...what if.

STANDARD HILL LIVESTOCK 2 YEAR OLD ANGUS BULLS CON'T



LOT 18 **STANDARD HILL CHARGER 38L**

MERIT MCLAREN 8020F  
S: DURALTA 8020 INFERNO 42H  
DURALTA 9C EMULATION 32F  
DFCC 244B FLO RIDER 22F  
D: STANDARD HILL ELBA 44H  
STANDARD HILL ELBA 378F

BAR 5 RANGE BOSS 4002  
MERIT BLACKCLASS 6060D  
DURALTA SPRING FEVER 9C  
DURALTA 56S EMULATION 50U  
SIX MILE COMPLETE 244B  
DFCC 9194 LIBBY 13Z  
STANDARD HILL MAJOR 350C  
STANDARD HILL ELBA 483B

Weights	Birth	Apr 25	Weaning	Oct 8	Yearling	Mar 20
	75		600		1050	

EPDs CE 9.0 BW -1.4 WW 40 YW 73 SC 0.91 MCE 9.0 MILK 34

Another great heifer bull option. Sleep easy with this guy. He has tons of middle rib dimension, length of skeleton, and scrotal circumference. There is longevity in the maternal lines of both sides of his pedigree. December 29th wt - 1595.



FULL SIB

TATTOO: SHL 38L REG #: 2321786 2-YEAR OLD BULL



LOT 19 **STANDARD HILL COMPLETE 55L**

SIX MILE COMPLETE 244B  
S: DFCC 244B FLO RIDER 22F  
DFCC 9194 LIBBY 13Z  
STANDARD HILL MAJOR 350C  
D: STANDARD HILL ELBA 378G  
STANDARD HILL ELBA 483B

CONNELLY COMPLETE 8454  
SIX MILE QUEEN MOTHER 849U  
SOO LINE KODIAK 9194  
LODGE DUCHESS 42T  
GVC SETTLER 004X  
STANDARD HILL LADY ANN 117X  
MINBURN QUANTUM 55Y  
STANDARD HILL ELBA 69P

Weights	Birth	Apr 14	Weaning	Oct 8	Yearling	Mar 20
	79		645		1100	

EPDs CE 5.0 BW 0.0 WW 46 YW 78 SC 0.46 MCE 7.0 MILK 33

Here is a ripper of a two year old heifer bull. Phenotypically this guy is one of the most muscular and attractive in the pen. Weight wise he is near the top, the pen is very consistent. This guy's dam is a high capacity tank of a cow with a beautiful udder. She is a consistent producer and has a top end bull again in development. December 29th weight - 1595.



DAM

TATTOO: SHL 55L REG #: 2321775 2-YEAR OLD BULL



LOT 20

**STANDARD HILL COMPLETE 78L**

SIX MILE COMPLETE 244B  
S: DFCC 244B FLO RIDER 22F  
DFCC 9194 LIBBY 13Z

MINBURN QUANTUM 55Y  
D: STANDARD HILL ELBA 483B  
STANDARD HILL ELBA 69P

CONNELY COMPLETE 8454  
SIX MILE QUEEN MOTHER 849U  
500 LINE KODIAK 9194  
LODGE DUCHESS 42T

TK QUANTUM PHYSICAL 61P  
MINBURN MAY 198T  
STANDARD HILL TRAVELER 6C  
STANDARD HILL ELBA 9K

Weights	Birth Apr 15	Weaning Oct 8	Yearling Mar 20
	80	655	1055
EPDs CE 6.0	BW 0.2	WW 43	YW 67
	SC 0.75	MCE 8.0	MILK 32



Long bodied, smooth made bull that would work well on heifers for calving ease and/or cows for making a tremendous group of females. He is a maternal sibling to the dam of lot 19 and the grand dam of lot 18. Our cow families have longevity. The Flo Rider daughters, 78L's paternal sisters are proving themselves very useful. See lots 13, 14, 16, 18. Dec 29 weight - 1595.

TATTOO: SHL 78L REG #: 2321724 2-YEAR OLD BULL



LOT 21

**STANDARD HILL COMPLETE 22L**

SIX MILE COMPLETE 244B  
S: DFCC 244B FLO RIDER 22F  
DFCC 9194 LIBBY 13Z

STANDARD HILL BENGAL 479A  
D: STANDARD HILL ANN 350F  
STANDARD HILL LADY ANN 117X

CONNELY COMPLETE 8454  
SIX MILE QUEEN MOTHER 849U  
500 LINE KODIAK 9194  
LODGE DUCHESS 42T

HF TIGER 5T  
STANDARD HILL LADY ANN 23P  
LLB 557S TRADITION 181U  
STANDARD HILL LADY ANN 41R

Weights	Birth Apr 27	Weaning Oct 8	Yearling Mar 20
	88	595	1070
EPDs CE 5.0	BW 0.5	WW 41	YW 76
	SC 1.61	MCE 7.0	MILK 33



Stocky made Flo Rider son with a very maternal dam. 22L is long, deep, and smooth. He has a good hip and good Angus character. His dam is a maternal sibling to our Major 350C, and her cow lines all through our sale offering. Heavy weight bull at last weight and one of the largest testicled. December 29th weight - 1650.

TATTOO: SHL 22L REG #: 2321748 2-YEAR OLD BULL



LOT 22

**STANDARD HILL COMPLETE 19L**

SIX MILE COMPLETE 244B  
S: DFCC 244B FLO RIDER 22F  
DFCC 9194 LIBBY 13Z

STANDARD HILL BENGAL 479A  
D: STANDARD HILL ANN 339F  
STANDARD HILL LADY ANN 20X

CONNELY COMPLETE 8454  
SIX MILE QUEEN MOTHER 849U  
500 LINE KODIAK 9194  
LODGE DUCHESS 42T

HF TIGER 5T  
STANDARD HILL LADY ANN 23P  
S A V BISMARCK 568Z  
STANDARD HILL LADY ANN 33T

Weights	Birth Apr 19	Weaning Oct 8	Yearling Mar 20
	93	610	1095
EPDs CE 3.0	BW 1.7	WW 44	YW 83
	SC 0.90	MCE 5.0	MILK 27



Another sound structured Flo Rider son. He is a 1/2 sibling to lot 21. Dam is closely related to the dam of lot 25, who has raised herd sires. Our two year olds have been developed and selected in a way to maintain their longevity. We hope you can use these bulls for a long time. December 29th weight - 1590.

TATTOO: SHL 19L REG #: 2321747 2-YEAR OLD BULL

**LOT 23 STANDARD HILL COMPLETE 56L**



SIX MILE COMPLETE 244B  
 S: DFCC 244B FLO RIDER 22F  
 DFCC 9194 LIBBY 13Z

BELVIN DISPUTE 6125  
 D: STANDARD HILL ANN 50H  
 STANDARD HILL LADY ANN 117X

CONNELLY COMPLETE 8454  
 SIX MILE QUEEN MOTHER 849U  
 SOO LINE KODIAK 9194  
 LODGE DUCHESS 42T

HF JUNCTION 18B  
 BARBARA OF RING CREEK 65Y  
 LLB TRADITION 181U  
 STANDARD HILL LADY ANN 41R

Weights	Birth	Apr 19	Weaning	Oct 8	Yearling	Mar 20
		94		655		1130

EPDs CE --- BW --- WW --- YW --- SC --- MCE --- MILK ---



Another sound structured Flo Rider son. He is a 1/4 sibling to lot 21. This group of two year old bulls has a lot of uniformity, which is something we strive for. By culling hard and retaining our own females we have continued to build the power of the cow herd. 117X runs in a lot of our pedigrees. Sells without papers due to a white spot. December 29th weight - 1590.

TATTOO: SHL 56L REG #: ----- 2-YEAR OLD BULL

**LOT 24 STANDARD HILL WRANGLER 91L**



BELVIN DISPUTE 6125  
 S: STANDARD HILL DISPUTE 56H  
 STANDARD HILL LADY ANN 12Y

EARLY SUNSET FREEDOM 89U  
 D: STANDARD HILL ANN 490C  
 STANDARD HILL LADY ANN 6S

HF JUNCTION 18B  
 BARBARA OF RING CREEK 65Y  
 S A V FINAL ANSWER 003S  
 STANDARD HILL LADY ANN 28W

PSF FREEDOM 12S  
 ROSE HILL MISS DAWN 31Z  
 K G POWER DESIGN  
 STANDARD HILL LADY ANN 23P

Weights	Birth	Apr 22	Weaning	Oct 8	Yearling	Mar 20
		89		625		1095

EPDs CE 0.0 BW 2.2 WW 48 YW 86 SC 0.93 MCE 4.0 MILK 27



High capacity, high maternal bull. His dam has been a great cow and lasted the test of time with a few of her Freedom 89U sisters. The paternal side of his pedigree is one with a lot of growth and milk. Pictured inset is his maternal sibling who is the dam of lot 6. December 29th weight - 1585.

TATTOO: SHL 91L REG #: 2321728 2-YEAR OLD BULL

**LOT 25 STANDARD HILL WRANGLER 18L**



BELVIN DISPUTE 6125  
 S: STANDARD HILL DISPUTE 56H  
 STANDARD HILL LADY ANN 12Y

SCC BANDO 45A  
 D: STANDARD HILL ANN 339E  
 STANDARD HILL LADY ANN 20X

HF JUNCTION 18B  
 BARBARA OF RING CREEK 65Y  
 S A V FINAL ANSWER 003S  
 STANDARD HILL LADY ANN 28W

LLB 1845 BANDO 502X  
 SCC PRIDE 31X  
 S A V BISMARCK 5682  
 STANDARD HILL LADY ANN 33T

Weights	Birth	Apr 12	Weaning	Oct 8	Yearling	Mar 20
		95		670		1100

EPDs CE -4.0 BW 4.1 WW 56 YW 93 SC 1.87 MCE 3.0 MILK 23



Performance bull off a solid cow. Wrangler 18L is long and smooth. He should calve easy but is recommended for cows. He was the heaviest of the group at weaning and tied for third at yearling weights. His dam is a large ribbed, moderate framed, long bodied cow with a functional and esthetically pleasing udder. December 29th weight - 1620.

TATTOO: SHL 18L REG #: 2321738 2-YEAR OLD BULL



STANDARD HILL LIVESTOCK 2 YEAR OLD F1 BULL



**26 SHL KINGSMAN 441L**

MERIT STONEY CREEK 4023 HF PROWLER 43U  
 S: BEAR CREEK STONEY 32F MERIT PRIDE 2010  
 BEAR CREEK LASS 32Y SSA DENSITY 26T  
 YOUNG DALE LASS 49R  
 TCF 305A STACKED 609D TCF JVJ 11X THE GOODS 305A  
 D: STANDARD-HILL GLITTER 96G GHC MISS DEW 185U  
 SHPH 7S GLITTER 24Y SQUARE-D PAT 2N 7S  
 MHFM MISS NED 806H 627ST

Weights	Birth	May 1	Weaning	Oct 8	Yearling	Mar 20
		96		645		1090
EPDs	CE	BW	WW	YW	SC	MCE MILK



Our only F1 bull on offer this year is a powerful individual. He is long bodied and muscular, and should cover a slew of cows. Sired by our Stoney 32F Angus herd sire that had a stout set of bulls the past few years. His dam is a maternal sibling to our Polled Hereford herd sire Ace 96E. There is lots of cow quality built in to this guy. December 29th weight - 1705.

TATTOO: SHL 441L REG #: ----- 2-YEAR OLD BULL

STANDARD HILL  
 HEREFORD REFERENCE SIRE



POLLED HEREFORD REF SIRE PCL 4013 JUGERNAUT ET 20J

Jugernaut is the sire of all of the home bred yearling bulls in the sale. He continued to develop and mature in the last year and we are very pleased with his progeny to date. His first daughters have just started to calve and have great udders; we look forward to seeing what they can do. His group of daughters in the replacement pen is exciting to say the least. His influence looks to be one that will have a long term impact on our Hereford program. He has merit to his EPDs for calving ease, birth weight, weaning weight, milk, scrotal, cow fertility, and marbling.

STANDARD HILL  
YEARLING HEREFORD BULLS

LOT 27



LOT 27 STANDARD-HILL COLOSSUS 109M

TATTOO:  
SHL 109M

REG #:  
C03118351

YEARLING  
BULL

INNISFAIL WHR X651/723 4013 ET  
S: PCL 4013 JUGERNAUT ET 20J  
PCL STARLET 44U ET 77A  
MCCOY 8Y MAVERICK 25E  
D: STANDARD-HILL IRIS 116H  
STANDARD-HILL 7Y IRIS 22C

Weights	Birth Jan 18	Weaning Aug 27	Yearling Dec 21
	74	690	1000

EPDs CE 10.4 BW -0.8 WW 47.7 YW 76.3 SC 1.6 MCE 4.1 MILK 30.2

Calving ease bull with growth. This guy is a shoe in to lead off the Hereford division. He has a very moderate, 74 lbs, birth weight, and was up near the top of the group at weaning and yearling time. He is long bodied, wide based, strong topped, deep ribbed, well marked, and quiet dispositioned. He was Reserve Senior Bull Calf Champion at Stockade Round-Up last November. His dam is a tanky cow that is also well marked. Another one of Jayce's cows did a fine job here.

LOT 28 STANDARD-HILL ICEMAN 115M



INNISFAIL WHR X651/723 4013 ET  
S: PCL 4013 JUGERNAUT ET 20J  
PCL STARLET 44U ET 77A

STANDARD-HILL ACE 96F  
D: STANDARD-HILL DIANNE 102K  
STANDARD-HILL 173A DIANNE 8D

Weights	Birth Jan 18	Weaning Aug 27	Yearling Dec 21
	70	550	840

EPDs CE 7.2 BW 0.1 WW 50.2 YW 82.4 SC 1.4 MCE 2.2 MILK 21.4

Calving ease bull off a first-calf heifer. Ice-man 115M is well marked; red necked, pigmented eyes. He was born at a modest 70 lbs. He will never be large, but he will always work on heifers. Despite his smaller performance measures there is plenty of performance in his pedigree and I expect there is more than his young dam was able to do in year one.



TATTOO: SHL 115M REG #: C03114672 YEARLING BULL

LOT 29



Standard-Hill 173A Logan 187E  
Maternal Grand Dam of Lot 29

LOT 29 STANDARD-HILL NITECRAWLER 145M

TATTOO:  
SHL 145M

REG #:  
C03114671

YEARLING  
BULL

INNISFAIL WHR X651/723 4013 ET  
S: PCL 4013 JUGERNAUT ET 20J  
PCL STARLET 44U ET 77A  
STANDARD-HILL ACE 96F  
D: STANDARD-HILL LOGAN 152J  
STANDARD-HILL 173A LOGAN 187E

Weights	Birth Jan 24	Weaning Aug 27	Yearling Dec 21
	82	680	1030
EPDs CE 4.5 BW 1.4 WW 57.7 YW 90.2 SC 1.5 MCE 2.4 MILK 24.8			

EFBEEF TFL U208 TESTED X651 ET  
INNISFAIL P230 T723  
NJW 98S DURANGO 44U  
C&T 122L STARLET 9N  
CHSF 5Y DEALER 13D  
SHPH 7S GLITTER 24Y  
SHPH 62T CANNON 173A  
SQUARE-D LOGAN 603Y

Very stylish calving ease bull with growth and muscle. This fella came into the world at a moderate 82 lbs and was third heaviest at weaning, and second at yearling. He is level topped, round muscled, large barrelled, and well marked except for some white on the scrotum. When you step behind him you really appreciate his width through his entire skeleton. His young dam has done a nice job to date and she is off one of our highest producing Hereford cows. **RETAINING IN HERD SEMEN**

LOT 30 STANDARD-HILL CALLISTO 142M



TATTOO: SHL 142M REG #: C03114674 YEARLING BULL

INNISFAIL WHR X651/723 4013 ET  
S: PCL 4013 JUGERNAUT ET 20J  
PCL STARLET 44U ET 77A  
STANDARD-HILL ACE 96F  
D: STANDARD-HILL KIM 119K  
WCC 69A JESSICA 6375D

Weights	Birth Feb 3	Weaning Aug 27	Yearling Dec 21
	77	635	955
EPDs CE 4.3 BW 1.7 WW 60.1 YW 94.4 SC 1.5 MCE 2.8 MILK 29.2			

EFBEEF TFL U208 TESTED X651 ET  
INNISFAIL P230 T723  
NJW 98S DURANGO 44U  
C&T 122L STARLET 9N  
CHSF 5Y DEALER 13D  
SHPH 7S GLITTER 24Y  
HAROLDSONS DELTA ET 69A  
WCC 361X EMMA 375A

A good option for heifers. 142M is eye appealing and large ribbed. He is well marked; with just a few spots short of 100% eye pigment, short socks, and a pigmented scrotum. I have always admired his width of skeleton and hip. His dam is a first calver and maternal sibling to the dam of feature bull, lot 31 Wolverine 113M.

LOT 31



Stockade Round-Up 2024

LOT 31 STANDARD-HILL WOLVERINE 113M

INNISFAIL WHR X651/723 4013 ET  
 S: PCL 4013 JUGERNAUT ET 20J  
 PCL STARLET 44U ET 77A  
 MCCOY 53A MAGNET 109E  
 D: STANDARD-HILL KIM 119H  
 WCC 69A JESSICA 6375D

TATTOO: SHL 113M  
 REG #: C03114669  
 YEARLING BULL

Weights	Birth Feb 1	Weaning Aug 27	Yearling Dec 21
	97	705	1075

EPDs CE -1.6 BW 3.5 WW 59.5 YW 94.9 SC 1.5 MCE -0.4 MILK 34.3

Performance bull with loads of eye appeal. 113M has almost 100% eye pigment, a red neck, and is short marked. He is deep ribbed and extremely long bodied and clean. He was the heaviest bull at weaning and yearling by a decent margin. His dam is a beautiful uddered, larger framed cow that is also well marked. I love the foot that his sire, PCL 4013 Jugernaut ET 20J has and he's passing it on to his offspring. This guy was shown last fall and has always been quiet.



DAM



HEREFORD REFERENCE SIRE

Square-D Titan 964J  
 Sire of Lot 33

LOT 32 STANDARD-HILL HULK 123M



INNISFAIL WHR X651/723 4013 ET  
 S: PCL 4013 JUGERNAUT ET 20J  
 PCL STARLET 44U ET 77A  
 NJW 79Z 22Z HEAVY DUTY 72C ET  
 D: SQUARE-D ELLIOT ET 001J  
 SQUARE-D LOGAN 272Z

Weights	Birth Jan 23	Weaning Aug 27	Yearling Dec 21
	89	675	995

EPDs CE 4.2 BW 2.8 WW 61.4 YW 94.7 SC 2.0 MCE 4.7 MILK 32.8

Large barreled, masculine well marked bull with lots of testicle. 123M has a nice birthweight of 89 lbs which makes him a better option for cows. He has a lot of character; a large crest and high libido. He has a hip on him that you'll admire. His dam was a flush product at Square-D and Jayce purchased her in their production sale. Her sire Heavy Duty is impressive.



MATERNAL GRAND SIRE

TATTOO: SHL 123M REG #: C03118352 YEARLING BULL



**LOT 33 STANDARD-HILL TITAN 111M**

SQUARE-D DAGGER 272G  
S: SQUARE-D TITAN 964J  
SQUARE-D KITTY 664G

SQUARE-D CENTURY 957B  
D: SQUARE-D RAYE 33F  
SQUARE-D LOGAN 316Z

8W NJW 139X 10W PAYDAY 31E  
SQUARE-D ELLIE 472W  
SQUARE-D CENTURY 957B  
SQUARE-D BELLE 54C

NJW 735 W18 HOMEGROWN 8Y ET  
SQUARE-D JAEDEN 257P  
SQUARE-D STYLUS 328U  
SQUARE-D NADIA 861P

Weights	Birth Mar 7	Weaning Aug 27	Yearling Dec 21
	83	535	855

EPDs CE 4.6 BW 0.6 WW 40.4 YW 65.6 SC 0.8 MCE 4.2 MILK 28.6



Younger calf with a moderate birthweight and growth. This guy was purchased in dam from the Square-D Herefords Dispersal sale in 2023. His dam is a large bodied Century daughter with a good udder. Despite his March birthdate, 111M performed fairly well in a group of mostly January calves. He is attractive; clean in his lines, smooth bodied, and square made.

TATTOO: SHL 111M REG #: C03120545 YEARLING BULL



**LOT 34 STANDARD-HILL CYCLOPS 120M**

INNISFAIL WHR X651/723 4013 ET  
S: PCL 4013 JUGERNAUT ET 20J  
PCL STARLET 44U ET 77A

K-COW HARVARD 9H  
D: STANDARD-HILL CLARA 104K  
STANDARD-HILL CLARA 6G

EFBEEF TFL U208 TESTED X651 ET  
INNISFAIL P230 T723  
NJW 985 DURANGO 44U  
C&T 122L STARLET 9N

K-COW BAZINGA 737B  
K-COW RODAYO 9Z  
MCCOY 8Y MAVERICK 25E  
STANDARD-HILL CLARA 11C

Weights	Birth Jan 22	Weaning Aug 27	Yearling Dec 21
	82	630	885

EPDs CE 3.8 BW 1.5 WW 55.7 YW 91.9 SC 1.4 MCE 0.3 MILK 26.7



Cyclops 120M is a good option for the heifer pen. His first calver mother is a daughter of our Clara 6G cow that we are very high on. She won Champion Cow/-Calf pair at the NW Hereford Field Day. 120M has length of body, bold rib expression, and a decent hip in him. He has 85% eye pigmentation.

TATTOO: SHL 120M REG #: C03114673 YEARLING BULL



**LOT 35 STANDARD-HILL JUGERNAUT 116M**

INNISFAIL WHR X651/723 4013 ET  
S: PCL 4013 JUGERNAUT ET 20J  
PCL STARLET 44U ET 77A

MCCOY 53A MAGNET 109E  
D: STANDARD-HILL KARISTA 128H  
STANDARD-HILL 15B KARISTA 40E

EFBEEF TFL U208 TESTED X651 ET  
INNISFAIL P230 T723  
NJW 985 DURANGO 44U  
C&T 122L STARLET 9N

MCCOY 70Y SKYFALL 53A  
MCCOY P20 ZENA 1A  
STANDARD-HILL HARLAN 15B  
SHPH 75 KARISTA 28W

Weights	Birth Feb 1	Weaning Aug 27	Yearling Dec 21
	86	645	975

EPDs CE 3.3 BW 2.1 WW 57.4 YW 91.2 SC 1.8 MCE 1.2 MILK 28.8



Dark red bull with lots of body and large testicles. 116M has a lot of mass to him, he's got muscle and skeletal length and width. He is docile and easy to handle. His dam has a nice udder with ample milk and moderate teat size. He is a maternal brother to lot 37.

TATTOO: SHL 116M REG #: C03114920 YEARLING BULL

LOT **36** STANDARD-HILL HEAVY 172M



NJW 79Z 22Z HEAVY DUTY 72C ET  
 S: SQUARE-D HEAVY DOSE 276F  
 SQUARE-D AVERY 476Y  
 SQUARE-D CENTURY 957B  
 D: SQUARE-D KITTY 664F  
 SQUARE-D BELLE 54C

NJW 67U 28M BIG MAX 22Z  
 BW 91H 100W RITA 79Z ET  
 NJW 98S DURANGO 44U  
 C&T 122L STARLET 9N  
 NJW 73S W18 HOMEGROWN 8Y ET  
 SQUARE-D JAEDEN 257P  
 NJW 34S 38W BEEF 15Z ET  
 DUNROBIN 82R SANDY 54T

Weights	Birth Mar 13	Weaning Aug 27	Yearling Dec 21
	97	555	855
EPDs CE 0.8 BW 4.2 WW 49.3 YW 82.2 SC 1.1 MCE -1.6 MILK 26.9			



Marked up, stout made, cow bull purchased in dam from the Square-D Dispersal Sale. 172M is marked just right; red eyes, neck, legs, scrotum. He has length, width, and muscle. He is also very hairy. His dam is very feminine with an ideal udder and lots of capacity.

DAM

TATTOO: SHL 172M REG #: C03118347 YEARLING BULL

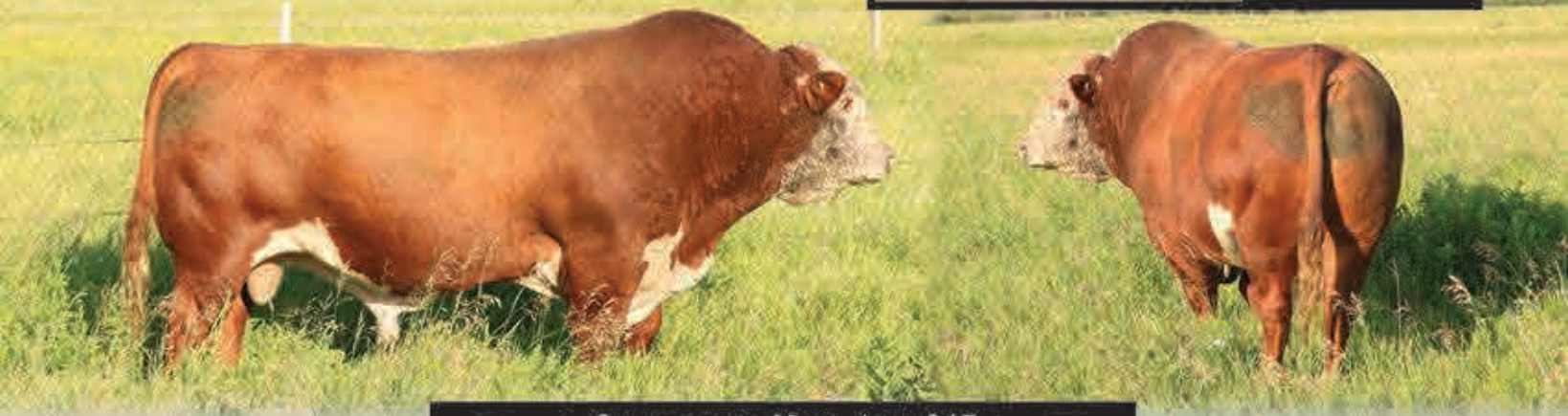
STANDARD HILL LIVESTOCK HEREFORD REFERENCE SIRE

STANDARD-HILL MATER 23F

Mater is a performance bull with a lot of red meat. He is an aggressive breeding bull. He'd breed the whole herd and look good doing it. Great bunch of replacement heifers off him coming online this calving season.



Square-D Heavy Dose 276F Sire of Lot 36



STANDARD HILL ACE 96F

Ace progeny are impressive with large middles, round muscle, long bodies, deep heels, wide heads, and moderate frames. His dam was a picturesque female. His name is on many maternal pedigrees this year.



STANDARD HILL  
2 YEAR OLD HEREFORD BULLS

LOT 37



LOT 37 STANDARD-HILL GAMBLER 116L

TATTOO:  
SHL 116L

REG #:  
C03103959

TWO-YEAR  
OLD BULL

CHSF 5Y DEALER 13D  
S: STANDARD-HILL ACE 96F  
SHPH 7S GLITTER 24Y  
MCCOY 53A MAGNET 109E  
D: STANDARD-HILL KARISTA 128H  
STANDARD-HILL 15B KARISTA 40E

CHSF 52U BRIAN 5Y  
CHSF 7W ROSE 22A  
SQUARE-D PAT 2N 7S  
MHFM MISS NED 806H 627S  
MCCOY 70Y SKYFALL 53A  
MCCOY P20 ZENA 1A  
STANDARD-HILL HARLAN 15B  
SHPH 7S KARISTA 28W

Weights	Birth Jan 17	Weaning Aug 24	Yearling Dec 9
	85	630	1010
EPDs CE 12.2 BW 0.2 WW 48.5 YW 82.1 SC 1.7 MCE 5.9 MILK 18.0			

Attractively marked and made Ace son with a moderate birthweight. If we could paint them all like this we would. He has red in all the right spots; red eye, red neck, red legs, red scrotum, but he'll put you in the black. Great skeletal extension in this guy to go with ample muscling, rib dimension, and level lines. His dam is 1500 lbs cow with a great udder and milk flow. This guy is super quiet and easy to work with but should still have the libido to get it done. December 29th wt - 1660.



Paternal  
Grand Dam



28W - Maternal Great Grand Dam

LOT 38 STANDARD-HILL JACK 107L



TATTOO: SHL 107L REG #: C03103957 TWO YEAR OLD BULL

CHSF 5Y DEALER 13D  
S: STANDARD-HILL ACE 96F  
SHPH 7S GLITTER 24Y

MCCOY 8Y MAVERICK 25E  
D: STANDARD-HILL CHELAN 105H  
SHPH 28U IVY 33Y

CHSF 52U BRIAN 5Y  
CHSF 7W ROSE 22A  
SQUARE-D PAT 2N 7S  
MHFM MISS NED 806H 627S

NJW 73S W18 HOMEGROWN 8Y ET  
MCCOY 70Y CONNIE 87A  
SHPH 2N BEEFMAN 28U  
SHPH 29R IVY 16T

Weights	Birth Apr 26	Weaning Oct 8	Yearling Mar 20
	70	565	885
EPDs CE 15.1 BW -1.8 WW 40.2 YW 64.6 SC 1.2 MCE 5.9 MILK 19.5			

Calving ease bull. Jack 107L is a bull that will excel in the heifer pen. The Ace 96F sons have great libido and calving ease. 107L is short marked with very little red on his crest, and little eye pigment. His dam is from the same cow line as Jayce's Iris' that have been real producers for him. December 29th weight - 1475.



25E

**LOT 39 STANDARD-HILL CYCLOPS 148L**



INNISFAIL WHR X651/723 4013 ET  
 S: PCL 4013 JUGERNAUT ET 20J  
 PCL STARLET 44U ET 77A

EFBEEF TFL U208 TESTED X651 ET  
 INNISFAIL P230 T723  
 NJW 985 DURANGO 44U  
 C&T 122L STARLET 9N

STANDARD-HILL ACE 96F  
 D: STANDARD-HILL TASHA 159J  
 STANDARD-HILL TASHA 111G

CHSF 5Y DEALER 13D  
 SHPH 75 GLITTER 24Y  
 STANDARD-HILL UNTAPPED 59D  
 WCC 69A JESSICA 1239D

Weights	Birth Apr 26	Weaning Oct 8	Yearling Mar 20
	72	505	865

EPDs CE 8.4 BW -0.2 WW 45.7 YW 73 SC 1.5 MCE 3.8 MILK 23.6



Another nice option for heifers with only a 72 lbs birth weight. 148L is attractive in his lines and his pigmentation. He has a large rib capacity and length of spine. His dam is a moderate cow with a great udder and foot. December 29th weight - 1410.

TATTOO: SHL 148L REG #: C03103967 TWO YEAR OLD BULL

**LOT 40 STANDARD-HILL CALLISTO 128L**



INNISFAIL WHR X651/723 4013 ET  
 S: PCL 4013 JUGERNAUT ET 20J  
 PCL STARLET 44U ET 77A

EFBEEF TFL U208 TESTED X651 ET  
 INNISFAIL P230 T723  
 NJW 985 DURANGO 44U  
 C&T 122L STARLET 9N

MCCOY 8Y MAVERICK 25E  
 D: STANDARD-HILL CHELAN 133J  
 STANDARD-HILL 151Z CHELAN 49D

NJW 735 W18 HOMEGROWN 8Y ET  
 MCCOY 70Y CONNIE 87A  
 JNHR 511W MAX 151Z  
 SHPH 40X CHELAN 46Z

Weights	Birth Apr 15	Weaning Oct 8	Yearling Mar 20
	80	550	880

EPDs CE 1.2 BW 2.2 WW 49.4 YW 76.5 SC 1.6 MCE -0.2 MILK 28.2



Dark red bull that would be great in the heifer pasture. He has just a tick of white on his neck, and some white on his scrotum. His dam is a smaller framed cow that has been producing at a good ratio. December 29th weight - 1450.

TATTOO: SHL 128L REG #: C03118347 TWO YEAR OLD BULL

**LOT 41 STANDARD-HILL TSUNAMI 118L**



CHSF 5Y DEALER 13D  
 S: STANDARD-HILL ACE 96F  
 SHPH 75 GLITTER 24Y

CHSF 52U BRIAN 5Y  
 CHSF 7W ROSE 22A  
 SQUARE-D PAT 2N 7S  
 MHFM MISS NED 806H 627S

BARE MR YOU TUBE 4Y  
 D: STANDARD-HILL 4Y IRIS 22E  
 SHPH 62T IRIS 16W

NCX WINCHESTER 745W  
 NCX MISS WHIPLASH 3W  
 SHPH 63N CANNON 62T  
 SHPH 10M HELENA 26R

Weights	Birth Apr 20	Weaning Oct 8	Yearling Mar 20
	93	580	1020

EPDs CE 6.5 BW 1.5 WW 40.8 YW 75.7 SC 0.9 MCE 2.8 MILK 15.4



Marked up performance bull. This fella has red in all the right places; pigmented eyes, mostly red neck, red legs, and a red scrotum. He is large hipped and wide topped with ample rib and chest floor. His dam is a smaller framed cow with a good udder. Really nice attractive and complete bull here. December 29th weight - 1625.

TATTOO: SHL 118L REG #: C03106677 TWO-YEAR OLD BULL



**LOT 42 STANDARD-HILL GAMBLER 150L**



CHSF 5Y DEALER 13D  
S: STANDARD-HILL ACE 96F  
SHPH 7S GLITTER 24Y

GHC-CT-GUARDIAN 40X  
D: STANDARD-HILL CLARA 101B  
SHPH 28U CLARA 102Z

CHSF 52U BRIAN 5Y  
CHSF 7W ROSE 22A  
SQUARE-D PAT 2N 7S  
MHFM MISS NED 806H 627S

MCCOY 47N THROTTLE 98S  
GHC MISS LASSIE 14M  
SHPH 2N BEEFMAN 28U  
SHPH 63N CLARITY 58T

Weights	Birth	Apr 30	Weaning	Oct 8	Yearling	Mar 20
		87		585		960

EPDs CE 7.8 BW 0.3 WW 45.2 YW 72.7 SC 0.5 MCE 4.0 MILK 19.3



Performance bull off a consistent producing good uddered cow. This fella has some growth, his dam always brings in the big calves that shine. He is level in his lines, long bodied and marked up pretty well except his right eye. He possesses a nice square hip and a good foot. December 29th weight - 1570.

TATTOO: SHL 150L REG #: C03103925 TWO-YEAR OLD BULL

**LOT 43 STANDARD-HILL RAMONE 117L**



CHSF 5Y DEALER 13D  
S: STANDARD-HILL MATER 23F  
STANDARD-HILL 40X IRIS 82A

STANDARD-HILL HARLAN 59E  
D: STANDARD-HILL HOPE 134H  
STANDARD-HILL HOPE 24F

CHSF 52U BRIAN 5Y  
CHSF 7W ROSE 22A  
GHC-CT-GUARDIAN 40X  
SHPH 7S IRIS 22Y

STANDARD-HILL HARLAN 15B  
SHPH 20X FAITH 51Z  
TCF 305A STACKED 609D  
STANDARD-HILL HOPE 27C

Weights	Birth	May 23	Weaning	Oct 8	Yearling	Mar 20
		91		530		930

EPDs CE 5.9 BW 3.2 WW 57.5 YW 92.7 SC 0.7 MCE 0.7 MILK 16.5



Youngest of the two year old pen but caught up quite quickly as a calf and is now one of the heaviest Hereford bulls. This guy has tons of middle. He has extra eye pigment, a red neck, and is short marked except a white patch on his left knee. December 29th weight - 1580.

TATTOO: SHL 117L REG #: C03103960 TWO-YEAR OLD BULL

**LOT 44 STANDARD-HILL KING 147L**



CHSF 5Y DEALER 13D  
S: STANDARD-HILL ACE 96F  
SHPH 7S GLITTER 24Y

STANDARD-HILL HARLAN 15B  
D: STANDARD-HILL 15B CHELAN 105E  
SHPH 28U IVY 33Y

CHSF 52U BRIAN 5Y  
CHSF 7W ROSE 22A  
SQUARE-D PAT 2N 7S  
MHFM MISS NED 806H 627S

FCC 2U HARLAN 7Y  
MHFM MISS NED 806H 603S  
SHPH 2N BEEFMAN 28U  
SHPH 29R IVY 16T

Weights	Birth	Apr 17	Weaning	Oct 8	Yearling	Mar 20
		80 twin		615		1035

EPDs CE 2.7 BW 3.4 WW 53.5 YW 89.7 SC 1.3 MCE 0.3 MILK 16.1



This guy is a well marked, growthy son of Ace 96F. He has the largest frame of any of the Hereford two year olds. He is a twin so don't let his small birthweight fool you, he was built for performance. He was the heaviest bull at weaning and yearling time of his contemporary group, and is still the heaviest bull at last weigh in. December 29th weight - 1625.

TATTOO: SHL 147L REG #: C03103941 TWO-YEAR OLD BULL



Welcome to the 2025 Standard Hill/Eye Hill Connection Sale. We want to thank Stephen & Brennan and families for inviting us to join them at their annual sale. It is a fun and rewarding week working with these two families and friends.

The years seem to go by quickly and the boys are growing up quickly as well. Rylen is busy working at Home Depot and at the farm. Nevan graduated from high school in June and is planning to go to autobody school in July of 2025. We are very appreciative of their help around the farm and in life.

2024 was a great year for the cattle industry. The market was very strong for all sectors. The cow herd is doing a great job raising very functional, growthy, and eye appealing calves, while under management at Standard Hill. I want to thank Stephen and family for their hard work and dedication to the farm. This is probably the best group of bulls we have offered for the sale. The yearlings are low birth weight with exceptional growth and muscle development. The 2 year olds are really good with low birth weights and excellent testicular development.

We want to thank the buyers from last year's sale for your trust in our program. If you are interested or have any questions about the sale offering please don't hesitate to call myself, Stephen, Brennan, or Shane Castle. The cattle are available for viewing any time before the sale at the Standard Hill farm. We are looking forward to seeing and talking cattle with many of you on March 7th.



Michael, Jeanette, Rylen and Nevan Gerlinsky  
Lloydminster, SK      Michael) 306-821-6446



**MG** ANGUS  
YEARLING  
BULLS

LOT  
**45**



**DURALTA 8020 INFERNO 42H**  
Sire of Lots 45,46,48,49

LOT **45** **MGA 42H INFERNO 201M**

TATTOO: MGA 201M  
REG #: 2382202  
YEARLING BULL

MERIT MCLAREN 8020F  
S: DURALTA 8020 INFERNO 42H  
DURALTA 9C EMULATION 32F  
STANDARD HILL MAJOR 350C  
D: STANDARD HILL RAVEN 1H  
STANDARD HILL RAVEN 310C

BAR S RANGE BOSS 4002  
MERIT BLACKCLASS 6060D  
DURALTA SPRING FEVER 9C  
DURALTA 56S EMULATION 50U  
CVC SETTLER 004X  
STANDARD HILL LADY ANN 117X  
EARLY SUNSET FREEDOM 89U  
STANDARD HILL BLACKBIRD 10U

Weights	Birth Jan 30	Weaning Aug 27	Yearling Dec 21
	83	690	1090

EPDs: CE 5.0 BW 0.3 WW 34 YW 67 SC 0.60 MCE 7.0 MILK 34

201M could be the best bull we have raised to date. He is deep ribbed, long spined, with expressive muscle shape, wide topped and large testicles with a real presence about him. Dam is long, deep, quiet, and ideal uddered. Duralta 8020 Inferno 42H has sired an exceptional calf here. 201M is following in his father's footsteps with calving ease, growth and excellent structure. Maternal brother sold to Daniel Demontarnal in last year's sale. <Retaining In Herd Semen Use>

LOT **46** **MGA 42H INFERNO 219M**



MERIT MCLAREN 8020F  
S: DURALTA 8020 INFERNO 42H  
DURALTA 9C EMULATION 32F  
STANDARD HILL BENGAL 308C  
D: STANDARD HILL RAVEN 301E  
STANDARD HILL RAVEN 310C

BAR S RANGE BOSS 4002  
MERIT BLACKCLASS 6060D  
DURALTA SPRING FEVER 9C  
DURALTA 56S EMULATION 50U  
STANDARD HILL BENGAL 479A  
STANDARD HILL BLACKBIRD 54T  
EARLY SUNSET FREEDOM 89U  
STANDARD HILL BLACKBIRD 10U

Weights	Birth Jan 18	Weaning Aug 27	Yearling Dec 21
	88	610	940

EPDs: CE 5.0 BW 0.1 WW 15 YW 35 SC 0.79 MCE 8.0 MILK 31

219M is a very correct bull calf with lots of hair, muscle definition, and testicle development. He has a good disposition and will sire calves that will push down the scale at weaning time. His mother is deep bodied, with good feet and a good disposition. Duralta 8020 Inferno 42H sired another very good bull for us. Maternal brother sold to Don G Hamilton.

TATTOO: MGA 219M REG #: 2382190 YEARLING BULL

**47 MGA SOUTH POINT 225M**



CONLEY SOUTH POINT 8362  
 S: WILBAR SOUTH POINT 114K  
 WILBAR MAYFLOWER 805H  
 LKR HOME RUN 27G  
 D: MGA ROXY 217K  
 STANDARD HILL ROXY 308D

STEVENSON TURNING POINT  
 P R LADY 909 4200-587  
 WILBAR TIGERSHARK 420Y  
 WILBAR MAYFLOWER 48Z  
 BORDER BUTTE FEDERATION 224E  
 FREYBURN LADY 178B  
 STANDARD HILL WISEMAN 41W  
 STANDARD HILL BLACKBIRD 54T

Weights	Birth Jan 27	Weaning Aug 27	Yearling Dec 21
	61	575	880

EPDs CE 10.0 BW -0.9 WW 40 YW 63 SC -- MCE 9.0 MILK 22



225M is a bull calf that possesses length of spine, abundance of hair, round hip structure, extra muscle, and calving ease. His mother is a 2 yr old with depth of body, excellent udder structure, and a great disposition. His sire, South Point 114K, has sired calves that have a lot of hair, muscle shape, good structure, and a desirable phenotype. This calf will work well in the heifer pen.

TATTOO: MGA 225M REG #: 2382201 YEARLING BULL

**48 MGA 42H INFERNO 205L**



MERIT MCLAREN 8020F  
 S: DURALTA 8020 INFERNO 42H  
 DURALTA 9C EMULATION 32F  
 BELVIN DISPUTE 6125  
 D: MGA BLACK VELVET 207H  
 MGA BLACK VELVET 13Y

BAR S RANGE BOSS 400Z  
 MERIT BLACKCLASS 6060D  
 DURALTA SPRING FEVER 9C  
 DURALTA 56S EMULATION 50U  
 HF JUNCTION 188  
 BARBARA OF RING CREEK 65Y  
 STANDARD HILL UMPIRE 48U  
 MGA BLACK VELVET 1P

Weights	Birth Apr 14	Weaning Oct 8	Yearling Mar 20
	84	600	1005

EPDs CE 1.0 BW 1.2 WW 38 YW 67 SC 0.44 MCE 6.0 MILK 27



Calving ease bull with depth of rib, growth, good feet, and excellent scotal development. He will sire calves that push down the scale at weaning time. His mother is a Belvin Dispute daughter with a good udder and consistent good calves. 42H has done it again, siring bulls that have muscle shape, depth of rib, good feet and calving ease. Maternal brother sold to Brian MacDonald in 2023.

TATTOO: MGA 205L REG #: 2356544 2-YEAR OLD BULL

**49 MGA 42H INFERNO 223L**



MERIT MCLAREN 8020F  
 S: DURALTA 8020 INFERNO 42H  
 DURALTA 9C EMULATION 32F  
 BELVIN DISPUTE 6125  
 D: MGA ANN 214H  
 STANDARD HILL ANN 348C

BAR S RANGE BOSS 400Z  
 MERIT BLACKCLASS 6060D  
 DURALTA SPRING FEVER 9C  
 DURALTA 56S EMULATION 50U  
 HF JUNCTION 188  
 BARBARA OF RING CREEK 65Y  
 STANDARD HILL BENGAL 479A  
 STANDARD HILL LADY ANN 14X

Weights	Birth Apr 12	Weaning Oct 8	Yearling Mar 20
	82	565	1070

EPDs CE 5.0 BW -0.1 WW 37 YW 71 SC 0.56 MCE 6.0 MILK 26



223L will be a calving ease specialist who sires calves with lots of growth. 223L has excellent muscle shape, good structure, and a clean sheath. His dam is a Belvin Dispute 6125 daughter that has a very nice udder, depth of rib, and length of spine. Duralta 8020 Inferno 42H is stamping his calves with muscle shape and calving ease.

TATTOO: MGA 223L REG #: 2356545 2-YEAR OLD BULL



On behalf of the Schachtel family and Eye Hill Stock farm welcome to the Red Angus section of the bull sale. We are very excited to once again work with the Myer and Gerlinsky families. I can't thank all our past and future customers enough for the support and taking time to look at our offering. This time of the year the catalogues flock to the mailboxes in droves and there are lots of options; I appreciate that we are one of them.

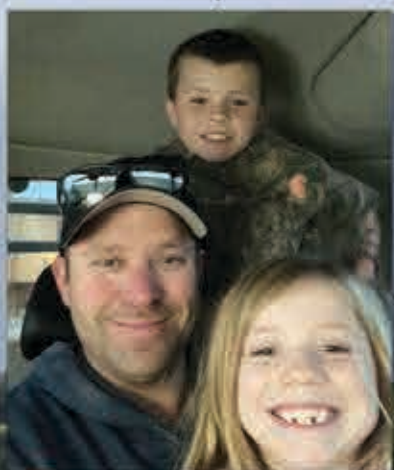
This past year has seen a continuing trend of increased markets. It seems every week the cattle market continues to trend higher. What an exciting time to be in the cattle business. The cattle business is a people business and it is very rewarding to hear the success stories of beef producers; many whom are close friends of our program.

We are proud of the bulls we have on offer this year. From new exciting AI sires, proven walking bulls, I feel there is a diverse set of genetics; many of them being outcross. There's lots of new exciting genetics for repeat customers. The heifer bull section is very strong overall in quantity and quality. On the cow bull section there are some real rancher bulls that will get out and work well in the cow-herd, and leave you some great replacements. Our focus has always been the cow herd; cows need to be sound, easy fleshing, with great structure or they hit the road. The commercial heifer pens are as strong as ever with some great groups from some outstanding producers.

The bulls were weaned on Sept.3 with no creep feed during their development. Since weaning they were developed on a moderate growing ration to promote longevity and adequate growth. Pictures were taken Jan. 22 and videos will be taken in mid February. The bulls change rapidly at this age so if you need updated video please contact us. Better yet you are welcome to tour the bulls anytime leading up to sale day; we would love to show you their mothers and their sisters. Please feel free to call with any questions. Thanks

*Eye Hill Stock Farm*

**Brennan, Resch and Lyndi  
Marshall, SK**



***The Schachtels***



**Pius and Theresa  
Macklin, SK**



**EYE HILL**  
STOCK FARM  
REFERENCE SIRES

The 2025 bull sale sire group is mix of dependable genetics as well as some new genetic options. The newest sire group is that of **CROWN ROYAL**. I was fortunate to find him as a mature bull at Owen Pickett's herd by Meadow Lake. One of the easiest fleshing bulls you will find and made so right. His dam is a model angus cow and his full sister is impressive. Bulls off the Crown Royal bull are easy doing, stout and have great haircoats. Another new sire is **90K** who we sold to Selte Land and Cattle. The sons off of him are great structured and are excellent options for the heifer pen. This will be the last set of **NAVIGATORS**. His sons exhibit his length of body, dark colour and awesome foot structure. His daughters are beautifully made cows. Other sires include the \$50,000 US valued **COMMON SENSE**; the dependable **REGAL**, a son of Moose Creek **CLOONEY**, as well as a son off our resident heifer bull in **LIGHTNING 44J**. All these sires were selected and utilized based on overall structure, calving ease with performance, predictability, fleshing ability and the dam behind them.



**RED LONE HILL CROWN ROYAL 151F**  
sire of Lots 53, 59-61, and 63



**RED FLYING K NAVIGATOR 25G**  
sire of Lots 50, 52, and 62; grandsire of Lot 64



**RED EYE HILL SLOWBURN 90K**  
Sire of Lots 56 and 57



**RED RREDS COMMON SENSE G933**  
sire of Lot 58



**FLYING K ROOSEVELT 46C**  
Grand Sire of Lots 53, 60-63



**RED MOOSE CLOONEY 20D**  
Sire of Lot 55  
Connection Sale 2025



**RED FRASER REGAL 909G**  
Grand Sire of Lot 51

Video available at [shlivestock.com](http://shlivestock.com)



**RED FLYING K LIGHTNING 44J**  
Sire of Lot 64

**EYE HILL**  
STOCK FARM  
YEARLING RED ANGUS BULLS

LOT **50**



Red Spittalburn Missey 314A  
Maternal Grand Dam - Flush Cow

**LOT 50 RED EYE HILL NAVIGATOR 70M**

TATTOO:  
PBS 70M

REG #:  
2378762

YEARLING  
BULL

- S: RED VGW SPOT LITE 772      RED 35CC NAVIGATOR A448  
 RED FLYING K NAVIGATOR 25G      RED VGW W054-HAZY 1390  
 RED FLYING K DUCHESS 25C      RED JRA ESCALADE 76A  
 RED NCJ COMING IN HOT 24E      RED FLYING K TAMMY 103X  
 D: RED EYE HILL MISSEY 50G      RRA AVIATOR 507  
 RED SPITTALBURN MISSEY 314A      RED NCJ MINERVA 35C  
     RED RMJ REDMAN 1T  
     RED SPITTALBURN MISSEY 824U

Weights	Birth Feb 7	Weaning Sep 3	Yearling Jan 31
	90	790	1195

EPDs: CE -2.0 BW 3.2 WW 56 YW 96 SC --- MCE -1.0 MILK 27

Dark red herd bull. He has had the look since summer and really resembles his sire. His dam is a head turner, one of most asked about cows, and a daughter of 314A. She also is the grandam of lot 64. This bull's pedigree is as stacked maternally as any bull we have ever offered. If we didn't have as much Navigator influence in our herd he wouldn't be in the sale.



LOT 51



LOT 51 RED EYE HILL REGAL 27M

TATTOO:  
PBS 27M

REG #:  
2373794

YEARLING  
BULL

FRASER POKER FACE 613D  
S: RED FRASER REGAL 909G  
RED FRASER MISS 601D  
VISION UNANIMOUS 1418  
RED HOWE DYNA QUEEN 241A  
RED BRYLORRED KODIAK 3A  
RED FRASER MISS 481B  
RED COCKBURN BREAKAWAY 411B  
RED SSS BREAK OUT 114Y  
RED COCKBURN MS HAUCK 459W  
D: RED SPITTALBURN TOPPER 678D  
RED SPITTALBURN TOPPER 244Z  
RED RMJ REDMAN 1T  
RED SPITTALBURN TOPPER 922W

Weights	Birth Jan 20	Weaning Sep 3	Yearling Jan 31
	88	810	1235

EPDs: CE 3.0 BW 1.8 WW 45 YW 77 SC --- MCE 8.0 MILK 12

Perhaps the best Regal son we have offered. Great structured with a herd bull look. He's become a favourite amongst visitors. Out of a super easy fleshing dam who is built for the long haul. His grand dam 244Z is a favourite as well to many visitors, and is producing quality offspring while looking half her age.



LOT 52



LOT 52 RED EYE HILL NAVIGATOR 61M

TATTOO:  
PBS 61M

REG #:  
2378757

YEARLING  
BULL

RED VGW SPOT LITE 772  
S: RED FLYING K NAVIGATOR 25G  
RED FLYING K DUCHESS 25C  
VISION UNANIMOUS 1418  
RED HOWE DYNA QUEEN 241A  
RED BRYLOR RED KODIAK 3A  
RED FRASER MISS 481B  
FRASER POKER FACE 613D  
D: RED FRASER MISS 802F  
RED FRASER MISS 601D

Weights	Birth Feb 4	Weaning Sep 3	Yearling Jan 31
	96	710	1100

EPDs: CE 1.5 BW 4.1 WW 54 YW 86 SC --- MCE 1.5 MILK 19

Full Brother to our high seller, Navigation 59J, to Golden Sunset; who has done a tremendous job. 61M patterns similar to 59J in his presence, correctness and foot structure. Take note he was a week overdue; based on his full brother should calve easier. His donor dam has an extensive track record with her Slowburn Son, 57K, being resold for \$19,500 at the CD Land and Cattle dispersal. If you want a herd bull to improve foot structure with an outstanding dam, 61M is your bull.





**LOT 53**



**PBS 69L - Maternal Brother to Lot 53**

**LOT 53 RED EYE HILL CROWN ROYAL 87M**

TATTOO: PBS 87M  
REG #: 2381442  
YEARLING BULL

RED XO CROWFOOT SHINE 296Z  
S: RED LONE HILL CROWN ROYAL 151F  
RED LONE HILL LEAH 412Y  
RED FLYING K ROOSEVELT 46C  
D: RED EYE HILL SYRINGA 11H  
RED EYE HILL SYRINGA 13F

RED CROWFOOT MOONSHINE 8081U  
RED CROWFOOT LADY 6503S  
RED CROWFOOT 6506S  
RED LITTLE DE LEAH 900S  
RED BIEBER ROOSEVELT W384  
RED FLYING K LANA 185Z  
RED FLYING K BOSS 95C  
RED EYE HILL SYRINGA 1416

Weights	Birth Feb 21	Weaning Sep 3	Yearling Jan 31
	88	680	1240
EPDs	CE 3.0	BW 0.3	WW 34 YW 59
		SC ---	MCE 7.0 MILK 28

What a stud! The youngest bull in the sale. He is made so right from his skull all the way through. His maternal brother was a feature in 2024, and sold to Stuart Cattle Station. In my opinion he is as good as his sire; which is a bold statement. These Crown Royal cattle are consistent, and so applicable to today's beef business. His dam is a great Roosevelt daughter that stems from our Syringa cow family. Retaining a 1/3 semen interest.



**LOT 54 RED EYE HILL CROWN ROYAL 72M**

RED XO CROWFOOT SHINE 296Z  
S: RED LONE HILL CROWN ROYAL 151F  
RED LONE HILL LEAH 412Y  
RED COCKBURN COWBOY KIND 754E  
D: RED EYE HILL LANA 23H  
RED SUNDOWN LANA 3Z

RED CROWFOOT MOONSHINE 8081U  
RED CROWFOOT LADY 6503S  
RED CROWFOOT 6506S  
RED LITTLE DE LEAH 900S  
RED PIE THE COWBOY KIND 343  
RED COCKBURN MS HAUCK 459W  
RED DKF BEEF 37U  
RED SUNDOWN LANA 3T

Weights	Birth Feb 8	Weaning Sep 3	Yearling Jan 31
	88	710	1185
EPDs	CE 1.0	BW 0.7	WW 37 YW 65
		SC ---	MCE 6.0 MILK 26



A real cowboy bull. A guy can't have enough bulls like this in the pen, super stout and hairy. Will sire a tremendous set of steers that will punch down the scales.

TATTOO: PBS 72M REG #: 2378765 YEARLING BULL



**LOT 55 RED EYE HILL CLOONEY 18M**

RED SOO LINE CASH 9161  
 S: RED MOOSE CREEK CLOONEY 20D  
 RED MOOSE CREEK CUPID 8A  
 RED SSS N. KING 652T  
 D: RED EYE HILL SYRINGA 1439  
 RED BAYSHORE SPICE 126S

RED CORNER CREEK CASH 2R  
 RED TR LYNN 301R  
 RED SVR GANGSTER 44X  
 RED GRAHAM CUPID 1105Y  
 RED SL NORSEMAN KING 2291  
 CROWFOOT BLACKBIRD 3023N  
 RED NEW BRAND 110L  
 RED GEIS SYRINGA 125'03

Weights	Birth Jan 13	Weaning Sep 3	Yearling Jan 31
	84	770	1155
EPDs: CE 6.0 BW 0.4 WW 40 YW 64 SC 0.38 MCE 2.0 MILK 29			



Long spined and as a dark red as you can make them. A bull that can be used in many different ways. This bull's maternal brother topped last year's sale to Hawkeye Ranching and Jensen Red Angus. 1439 is now a successful donor cow for us. Keep every daughter off this bull.

TATTOO: PBS 18M REG #: 2373788 YEARLING BULL

**LOT 56**



**LOT 56 RED EYE HILL SLOWBURN 51M**

RED LWNBRG SLOWBURN 102H  
 S: RED EYE HILL SLOWBURN 90K  
 RED EYE HILL KIT 65G  
 RED ANCHOR 1 29D THOR 271H  
 D: RED EYE HILL MS CRESTON 35K  
 RED EYE HILL MS CRESTON 24G

RED U2 DOMINION  
 RED U2 FAVORITE 275F  
 RED SIX MILE BRANDIN IRON 425E  
 RED SPITTALBURN KIT 549C  
 ANCHOR 1 THOR 29D  
 RED ANCHOR 1 CANADIAN FAYE 81D  
 RED COCKBURN COWBOY KIND 754E  
 RED EYE HILL MS CRESTON 1502

Weights	Birth Jan 31	Weaning Sep 3	Yearling Jan 31
	78	670	1080
EPDs: CE 6.0 BW 0.2 WW 41 YW 75 SC --- MCE 8.0 MILK 21			

TATTOO: PBS 51M  
 REG #: 2375959  
 YEARLING BULL

Moderate made, dark red, hairy and right in so many ways. Great heifer bull prospect that reminds me a lot of his sire Red Eye Hill Slowburn 90K when we sold him as a feature bull. The Slowburn progeny have been very popular; this guy will be no different on sale day.





**LOT 57 RED EYE HILL SLOWBURN 47M**

RED LWNBRG SLOWBURN 102H  
 S: RED EYE HILL SLOWBURN 90K  
 RED EYE HILL KIT 65G  
 RED VALLEYHILLS REPLAY 70E  
 D: RED EYE HILL MABEL 37K  
 RED SPITTALBURN MABEL 307A

RED U2 DOMINION  
 RED U2 FAVORITE 275F  
 RED SIX MILE BRANDIN IRON 425E  
 RED SPITTALBURN KIT 549C  
 VALLEYHILLS HOOVER DAM 27Z  
 PRAIRIELANE2029 ROSEBUD 7048  
 RED PIE GAME ON 9109  
 RED SPITTALBURN MABEL 67X

Weights	Birth	Jan 31	Weaning	Sep 3	Yearling	Jan31	
	78		670		1125		
EPDs	CE 3.0	BW 0.9	WW 41	YW 76	SC ---	MCE 7.0	MILK 20



A long spined growthy heifer bull. A full brother hit the ground running at 76 lbs a couple weeks ago. Sired by 90K who we were fortunate to retain half of from Selte Land and Cattle. The first calf heifer certainly knocked it out of the park on this one.

TATTOO: PBS 47M REG #: 2375957 YEARLING BULL



**LOT 58 RED EYE HILL COMMON SENSE 6M**

RED RREDS SENECA 731C  
 S: RED RREDS COMMON SENSE G933  
 RED PIE REBELLA 554  
 RED PIE GAME ON 9109  
 D: RED SPITTALBURN SUE 505C  
 RED SPITTALBURN SUE 149Y

RED BIEBER ROLLIN DEEP Y118  
 RED RREDS ASTER 309A  
 RED PIE CODE RED 9058  
 RED RAISLAND REBELLA 314-606  
 RED VGW GAME PLAN 508  
 RED TPIE CASCADE 561  
 RED SIX MILE CHEROKEE 350T  
 RED RSL SUE 750J

Weights	Birth	Jan 4	Weaning	Sep 3	Yearling	Jan31	
	78		710		1085		
EPDs	CE -1.5	BW 0.7	WW 36	YW 65	SC ---	MCE 1.0	MILK 21



A standout in summer for his overall muscle pattern. A bull that can be used many different ways. Out of the easy fleshing Common Sense sire group and an easy doing Game On daughter that always gets noticed on herd tours.

TATTOO: PBS 6M REG #: 2371665 YEARLING BULL



**LOT 59 RED EYE HILL CROWN ROYAL 78M**

RED XO CROWFOOT SHINE 296Z  
 S: RED LONE HILL CROWN ROYAL 151F  
 RED LONE HILL LEAH 412  
 RED MLK CRK LANCER 0119  
 D: RED EYE HILL ELBA 1636  
 RED EYE HILL ELBA 1010

RED CROWFOOT MOONSHINE 8081U  
 RED CROWFOOT LADY 6503S  
 RED CROWFOOT 6506S  
 RED LITTLE DE LEAH 900S  
 RED BUF CRK LANCER L297  
 RED MLK CRK EMU MAR 812  
 RED LAZY MC SPLASH 14T  
 RED GET-A-LONG RUTHE 0164

Weights	Birth	Feb 13	Weaning	Sep 3	Yearling	Jan31	
	78		675		1060		
EPDs	CE 7.0	BW -1.6	WW 31	YW 56	SC ---	MCE 8.0	MILK 21



Real nicely made calving ease option. Smooth made, stout with a great haircoat. Crown Royal sure did an outstanding job. Dam is a long-bodied Lancer daughter.

TATTOO: PBS 78M REG #: 2381433 YEARLING BULL



**LOT 60 RED EYE HILL CROWN ROYAL 35M**

RED XO CROWFOOT SHINE 296Z  
 S: RED LONE HILL CROWN ROYAL 151F  
 RED LONE HILL LEAH 412  
 RED FLYING K ROOSEVELT 46C  
 D: RED EYE HILL MS TROPHY 5G  
 RED J BAR DEE RED SUSIE 40D  
 RED CROWFOOT MOONSHINE 8081U  
 RED CROWFOOT LADY 6503S  
 RED CROWFOOT 6506S  
 RED LITTLE DE LEAH 900S  
 RED BIEBER ROOSEVELT W384  
 RED FLYING K LANA 185Z  
 RED RSL REDMAN 208Z  
 RED MCNEELY LC 303W SUSIE 6A

Weights	Birth Jan 27	Weaning Sep 3	Yearling Jan 31
	76	640	1010

EPDs CE 8.0 BW -1.8 WW 28 YW 50 SC --- MCE 10.0 MILK 23

Moderate, muscular bull with a tremendous hair coat. He would work excellent in the heifer pen for many years. Out of an ideal Roosevelt daughter; a bull that sure did a tremendous job in our herd.



TATTOO: PBS 35M REG #: 2375946 YEARLING BULL



**LOT 61 RED EYE HILL CROWN ROYAL 82M**

RED XO CROWFOOT SHINE 296Z  
 S: RED LONE HILL CROWN ROYAL 151F  
 RED LONE HILL LEAH 412  
 RED FLYING K ROOSEVELT 46C  
 D: RED EYE HILL LASS 29G  
 HOWE LASS 41B  
 RED CROWFOOT MOONSHINE 8081U  
 RED CROWFOOT LADY 6503S  
 RED CROWFOOT 6506S  
 RED LITTLE DE LEAH 900S  
 RED BIEBER ROOSEVELT W384  
 RED FLYING K LANA 185Z  
 TOWAW TEMPT 15X  
 RED HOWE LASS 130R

Weights	Birth Feb 13	Weaning Sep 3	Yearling Jan 31
	72	630	1040

EPDs CE 10.0 BW -2.4 WW 23 YW 41 SC --- MCE 11.0 MILK 27

Elite calving ease option. A moderate bull that could service heifers for many years. He's also very easy going and is the quietest bull in the pen. His dam is a moderate made cow with a beautiful udder.



TATTOO: PBS 82M REG #: 2381437 YEARLING BULL



**LOT 62 RED EYE HILL NAVIGATOR 41M**

RED VGW SPOT LITE 772  
 S: RED FLYING K NAVIGATOR 25G  
 RED FLYING K DUCHESS 25C  
 RED FLYING K ROOSEVELT 46C  
 D: RED EYE HILL MISS POTEET 10G  
 RED EYE HILL MISS POTEET 16E  
 RED 3SCC NAVIGATOR A448  
 RED VGW W054-HAZY 1390  
 RED JRA ESCALADE 76A  
 RED FLYING K TAMMY 103X  
 RED BIEBER ROOSEVELT W384  
 RED FLYING K LANA 185Z  
 RED FLYING K BOSS 95C  
 RED GEIS MISS POTEET 68'10

Weights	Birth Jan 29	Weaning Sep 3	Yearling Jan 31
	82	710	1055

EPDs CE 4.0 BW 1.0 WW 42 YW 66 SC --- MCE 4.0 MILK 25

Cherry dark red with some style! A bull that can be used in the heifer pen and easily graduate to the cows. His dam is a standout Roosevelt daughter going back to 68X. The maternal strength of this bull's pedigree is as good as any. Maternal brother is doing an awesome job at Bryon Mailer's.



TATTOO: PBS 41M REG #: 2375952 YEARLING BULL

**LOT 63 RED EYE HILL CROWN ROYAL 59M**



RED XO CROWFOOT SHINE 296Z  
 S: RED LONE HILL CROWN ROYAL 151F  
 RED LONE HILL LEAH 412  
 RED FLYING K ROOSEVELT 46C  
 D: RED EYE HILL MS CRESTON 13E  
 RED EYE HILL MS CRESTON 150Z

RED CROWFOOT MOONSHINE 8081U  
 RED CROWFOOT LADY 6503S  
 RED CROWFOOT 6506S  
 RED LITTLE DE LEAH 900S  
 RED BIEBER ROOSEVELT W384  
 RED FLYING K LANA 185Z  
 RED XO CROWFOOT SHINE 235Z  
 RED HOWE MS CRESTON 39A

Weights	Birth Feb 3	Weaning Sep 3	Yearling Jan31
	68	680	1045
EPDs	CE 13.0	BW -3.9	WW 30 YW 49
		SC ---	MCE 12.0 MILK 23



Elite calving ease. Smooth made, well balanced and long bodied. His dam, 13E, is a nicely made Roosevelt daughter that quietly brings in a quality calf every year. Maternal sister was a feature in the Touch of Class going to Foster Rockytop.

TATTOO: PBS 59M REG #: 2377813 YEARLING BULL

**LOT 64 RED EYE HILL LIGHTNING 46M**



RED FLYING K THUNDER 231G  
 S: RED FLYING K LIGHTNING 44J  
 RED FLYING K JACKIE 237G  
 RED FLYING K NAVIGATOR 25G  
 D: RED EYE HILL MISSEY 83K  
 RED EYE HILL MISSEY 50G

RED VCW THUNDER 647  
 RED FLYING K LOIS 52B  
 RED FLYING K MAX 69Z  
 RED FLYING K LADY 21D  
 RED VCW SPOT LITE 77Z  
 RED FLYING K DUCHESS 25C  
 RED NCJ COMING IN HOT 24E  
 RED SPITALBURN MISSEY 314A

Weights	Birth Jan 30	Weaning Sep 3	Yearling Jan31
	78	630	1080
EPDs	CE 5.0	BW 1.0	WW 44 YW 77
		SC ---	MCE 4.0 MILK 30



Sleep easy calving bull with some muscle shape. I really like the style and stamp of this bull. A carbon copy of his sire, our go to heifer bull, Lightning 44J. His young dam is a beauty and is a daughter of 50G (dam of lot 50) and is a granddaughter of 314A.

TATTOO: PBS 46M REG #: 2375956 YEARLING BULL



*Commercial  
Open Heifers*

65



14 F1 *HEREFORD/ANGUS* born April  
*STANDARD HILL LIVESTOCK*

66



6 *HEREFORD/ANGUS/SIMM* born Feb  
*TYSON MORIN - TRADEMARK RANCHING*

67



5 *RED ANGUS HEIFERS* born Feb/Mar  
*EYE HILL STOCK FARM*

68



5 *RED ANGUS HEIFERS* born February  
*COLLINGE LAND & CATTLE*

69



4 *BLACK/BBF HEIFERS* born April  
*STANDARD HILL LIVESTOCK*

Video and weights on heifers will be available before the sale

## Terms and Conditions

**Terms:** All sales are in Canadian Funds, payable by cash or cheque on sale day, unless other arrangements have been made prior to the sale with consignors. Every animal sells to the highest bidder, and in cases of disputes the auctioneer will make the decision to reopen the bidding. The auctioneer's decision will be final. Each animal becomes the responsibility of the purchaser as soon as sold.

**Announcements:** Any announcements from the stand take precedence over print material.

**Guarantee:** All animals are backed by the respective breed associations Breeder Guarantee. All bulls will be semen tested before the sale, weather permitting. A list of semen evaluation results will be available at the sale or by calling the consignors before the sale. Bulls will be semen tested prior to the sale, however may sell deferred. Deferred bulls will be semen tested satisfactory prior to delivery. If a satisfactory semen test is not produced the purchaser will be refunded. The sellers have replacement bulls available. Hereford bulls sold to purebred breeders will be parentage and genetic defect tested by the seller prior to delivery. Angus bulls sold to purebred breeders will be parentage verified by the seller prior to delivery. Any other parentage or defect testing may be requested by the purchaser, however cost may be the responsibility of the purchaser. All genetic testing results will be shared with the purchaser.

**Delivery:** Free delivery is available to central locations in Saskatchewan and Alberta with consideration of volume and value of purchases. Deliveries will commence after the sale.

**Feeding/Wintering Program:** Purchases can be sent back to their home pens and remain under consignor's management until April 15th free of charge. We recommend you insure your purchases for liability reasons.

**Insurance:** The sellers encourage the purchasers to insure animals that remain at the seller's ranch due to liability. Larry Toner with Stockmen's Insurance will be on site sale day.

**Sight Unseen Purchases:** Call the consignors to discuss what type of animal you require and your purchase price in mind. Sellers will do their best to fill your orders. Sellers encourage buyers to utilize the sales staff as well as picture and video to aid in selection.

All persons who attend the sale do so at their own risk.

# THANK YOU!

*for attending the sale and  
for showing interest in our programs*

JOIN US  
AUGUST 16TH, 2025  
FOR OUR OPEN HOUSE

Return Undeliverable to:

Standard Hill Livestock  
PO Box 227  
Maidstone, SK  
S0M 1M0



1 pm MST MAIDSTONE, SK

