



STANDARD HILL // EYE HILL
CONNECTION
BULL & FEMALE SALE  MARCH 8th, 2024

1 PM MST, Standard Hill Livestock, Maidstone, SK



www.shlivestock.com



14th Annual Sale Offering:

BLACK ANGUS YEARLINGS	13
TWO YEAR OLDS	7
ANGUS x HEREFORD F1 TWOS	5
POLLED HEREFORD YEARLINGS	8
TWO YEAR OLDS	6
RED ANGUS YEARLINGS	15
PICK OF EYE HILL HEIFER CALVES	1
COMMERCIAL OPEN HEIFERS	42
	<hr/>
	97 head

Presented by:

Standard Hill Livestock
 Stephen & Christine Myer
 Box 227 Maidstone, SK
 S0M 1M0
 Stephen) 306-893-8414
 standard.hill@live.ca
 shlivestock.com
 Black Angus (Lots 1-18)
 Hybrid Bulls (Lots 19-23)
 Polled Herefords (Lots 24-37)

& Eye Hill Stock Farm
 Brennan & Taryn Schachtel
 Box 421 Marshall, SK
 S0M 1R0
 Brennan) 306-821-2504
 eyehillb@gmail.com
 Red Angus (Lots 40-55)

with Guests
MG Angus
 Michael & Jeanette Gerlinsky
 Box 2765 Lloydminster, SK
 S9V 0Z1
 Mike) 306-821-6446
 mgangus1@gmail.com
 Black Angus (Lots 38-39)



Friday, March 8, 2024

1 pm MST (Alta Time)

@ Standard Hill Livestock

Staff/Sale Day Phones

Ryan Hurlburt, Auctioneer	306-292-9812
Jim Pulyk, Ringman	780-787-0646
Travis Bygrove, Ringman	780-205-6008
Shane Castle, Castlerock	306-741-7485
Devin Warrilow, Castlerock	780-581-4329
Mark Forsyth, Castlerock	306-784-7544
Stephen Myer	306-893-8414
Michael Gerlinsky	306-821-6446
Brennan Schachtel	306-821-2504

Internet Bidding Available

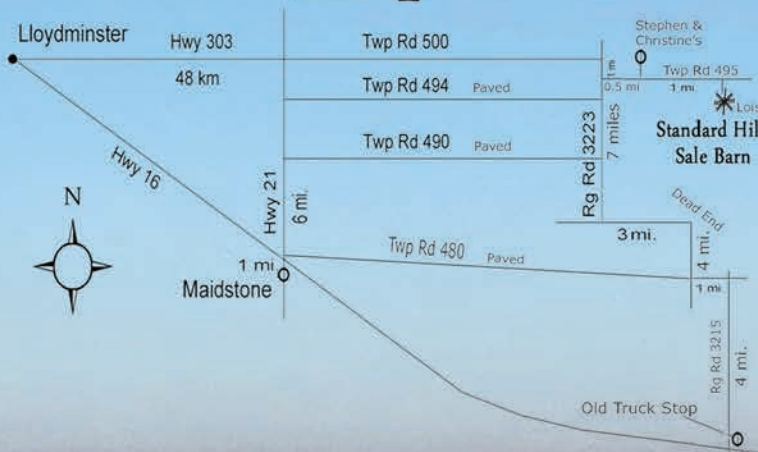
D | L | M | S
www.dlms.ca

For more information call DLMS:
Mark Shologan 780.699.5082 or
DLMS Purebred Team 780.991.3025

VIEW CATALOGUE & VIDEOS ONLINE

shlivestock.com buyagro.com dlms.ca

Map



Directions

From Lloydminster:

- 28 miles East on Highway 303
- 6 miles East on Township 500
- 1 mile South on Range Rd 3223
- 1.5 miles East on Township 495

From Maidstone:

- 6 miles North on Highway 21
- 6 miles East on Township 490
- 5 miles North on Range Rd 3223
- 1.5 miles East on Township 495



We would like to welcome everyone to our 14th annual sale. The March 8, 2024 edition will usher in a new look for the sale with a rebranding as the Standard Hill/Eye Hill Connection. It was time to recognize Brennan as a major part of this sale and give him props for his accomplishments to date. One of which is being awarded the 2024 Saskatchewan Angus Breeder of the Year. Congratulation go out to him and his crew for the achievement. We are proud to work with Eye Hill Stock Farm as part of this sale. Many more years of breeding high quality cattle are in the future. Along with them we are pleased that our friends, Mike and Jeanette Gerlinsky, MG Angus, are once again guest consignors to the sale. The friends you make in this business are perhaps the greatest part, good friends with good cattle.

We were fortunate this past year to receive the blessings we did and are able to present to you a strong set of cattle in this sale and in our replacement pen for your appraisal. All of our 2023 calf crop, be it January or April born, seem to have reached high on their genetic potential. Calves weaned off easily with the mild fall weather and have continued to flourish. Preg testing was a win again and we are very pleased with body condition on our bred females. Its an exciting period for the cattle industry once again with better prices at the market and renewed optimism. We are finally reaping the rewards for our hard work. Never a better time to cull hard than the present!

For any of you that don't know, we run two seperate calving seasons with January and April time periods. Our January calvers are a select group of purebred individuals that produce the yearling bulls for this sale. The yearling bulls this year are stout. At Agribition our Angus pen of three was Reserve Champion Angus Pen, and top Black Angus pen. Our April calving group consists of 95% purebred cows and some commercials which produce two-year old bulls and F1 heifers for sale, and a higher percentage of feeder animals. The two year old bulls are athletic and still growing. I can guarantee they will continue to look better and better through to turnout.

We select for a balance of traits with simplicity and function top of mind. Structural soundness and eye appeal, which are tied closely, are primary factors to our selection. Fertility, thickness, growth, calving ease, and maternal abilities are a few more of our focal points. We are driven by quality not quantity.

Please use this catalogue as a tour of our offering and join us for the sale and celebration of the year's accomplishments on March 8th. Thank you to our past customers, we're in your debt. I'd be happy to talk bull with you or arrange a time to tour the cattle before the sale. The door is always open!

Stephen & Christine Myer, Jayce, Karli, Landen

Box 227 Maidstone, SK

S0M 1M0

Stephen) 306-893-8414

standard.hill@live.ca

shlivestock.com

Black Angus (Lots 1-18)

Hybrid Bulls (Lots 19-23)

Polled Herefords (Lots 24-37)

Another year of milestones and accomplishments



Reserve Champion Pen of Angus Bulls - CWA 2023
Judge Brody Gardiner Olds, AB Lots 1,4,8



Saskatchewan
Junior ANGUS Association

2023 Gold Show, Lloydminster, SK
Judging Competition - Intermediate Champion
Sponsored by Double B Angus



Standard Hill Livestock
Yearling Angus Bulls



LOT 1



LOT 1 STANDARD HILL SCORCHER 82L

TATTOO: SHL 82L

REG #: 2321722

YEARLING BULL

MERIT MCLAREN 8020F S: DURALTA 8020 INFERNO 42H DURALTA 9C EMULATION 32F S A V FINAL ANSWER 0035 D: STANDARD HILL ANN 367A STANDARD HILL LADY ANN 79Y	BAR S RANGE BOSS 4002 MERIT BLACKCLASS 6060D DURALTA SPRING FEVER 9C DURALTA 56S EMULATION 50U SITZ TRAVELER 8180 S A V EMULOUS 8145 HF TIGER 5T STANDARD HILL LADY ANN 28U
--	--

Weights	Birth Jan 18	Weaning Aug 24	Yearling Dec 9
	83	740	1115

EPDs CE 11.0 BW -1.3 WW 42 YW 76 SC 0.97 MCE 10 MILK 31

Moderate frame meat machine with calving ease. A standout from a young age. Very complete bull with tons of eye appeal and strong footed. Exceptional depth of quarter and rib. Right near the top of the pen for growth and scrotal development. A member of our Reserve Grand Champion Pen of Bulls at Agribition last November. Top 10% of the breed for CE, BW, and Milk. His dam has three daughters working in our herd. Last Weight January 16th 1230 lbs.



Lot 1 as a calf, August 2023



Dam - 367A



Sire - Inferno 42H

Standard Hill Livestock Yearling Angus Bulls con't



STANDARD HILL FLINT 21L

MERIT MCLAREN 8020F BAR S RANGE BOSS 4002
 S: DURALTA 8020 INFERNO 42H MERIT BLACKCLASS 6060D
 DURALTA 9C EMULATION 32F DURALTA SPRING FEVER 9C
 DURALTA 56S EMULATION 50U
 STANDARD HILL BENGAL 479A HF TIGER 5T
 D: STANDARD HILL PRIDE 17J STANDARD HILL LADY ANN 23P
 STANDARD HILL PRIDE 338E SCC BANDO 45A
 STANDARD HILL PRIDE 15X

Weights	Birth Jan 8	Weaning Aug 24	Yearling Dec 9
	77	685	1020

EPDs	CE 7.0	BW -0.5	WW 39	YW 77	SC --	MCE 8.0	MILK 28

Calving eas bull with tremendous length of spine. 21L is a heifers first calf but still has some go to him and thickness throughout. His dam has an udder that will never break down, small teated and tightly attached, like her paternal siblings. Son of 21L's, grand dam, 338E, sells as Lot 9. Weight Jan 16-1130.



TATTOO: SHL 21L REG #: 2321801 YEARLING BULL



Pride 15X Great Grand Dam of Lot 2



Flo Rider 22F Grand Sire of Lot 3



Ann 356F Grand Dam of Lot 3



STANDARD HILL SMOULDER 24L

MERIT MCLAREN 8020F BAR S RANGE BOSS 4002
 S: DURALTA 8020 INFERNO 42H MERIT BLACKCLASS 6060D
 DURALTA 9C EMULATION 32F DURALTA SPRING FEVER 9C
 DURALTA 56S EMULATION 50U
 DFCC 244B FLO RIDER 22F SIX MILE COMPLETE 244B
 D: STANDARD HILL ANN 26H DFCC 9194 LIBBY 13Z
 STANDARD HILL ANN 356F STANDARD HILL BENGAL 479A
 STANDARD HILL LADY ANN 12Y

Weights	Birth Jan 16	Weaning Aug 24	Yearling Dec 9
	62	685	1030

EPDs	CE 14.0	BW -4.2	WW 34	YW 65	SC 1.12	MCE 10.0	MILK 31

This is the premier calving ease bull in the sale if you look at actual data and EPDs. He's good to look at also. 2022 born full sibling sold to RU Quarter Circle Ranch in last year's sale. Dam is a maternal sibling to last year's lead off yearling bull, Standard Hill Slater 26K, which will have progeny in next years sale. Weight Jan 16-1110.



TATTOO: SHL 24L REG #: 2321782 YEARLING BULL



Lot 3 as a calf



LOT 4



Lot 4 as a calf, August 2023



Lot 4's Dam, 41H



LOT 4

STANDARD HILL SMOKY 34L

MERIT MCLAREN 8020F
 S: DURALTA 8020 INFERNO 42H
 DURALTA 9C EMULATION 32F
 STANDARD HILL MAJOR 350C
 D: STANDARD HILL ANN 41H
 STANDARD HILL ANN 366E

BAR S RANGE BOSS 4002
 MERIT BLACKCLASS 6060D
 DURALTA SPRING FEVER 9C
 DURALTA 56S EMULATION 50U
 GVC SETTLER 004X
 STANDARD HILL LADY ANN 117X
 SCC BANDO 45A
 STANDARD HILL ANN 333A

Weights	Birth	Jan 20	Weaning	Aug 24	Yearling	Dec 9
	85		720		1075	

EPDs	CE	4.0	BW	0.5	WW	47	YW	87	SC	0.79	MCE	7.0	MILK	31
------	----	-----	----	-----	----	----	----	----	----	------	-----	-----	------	----

Square hipped smooth made Inferno calf. Smooth in his transitions, and round in his muscle pattern. Profiles to work on larger heifers or cows from his numbers. Second member of our Reserve Champ CWA pen, also exhibits the soundness of foot and frame that put them at the top of the field, second to Cockburn Red Angus. Dam has a great udder and exceptional length of body. She has some very powerful cows behind her. Last Weight January 16th 1200 lbs.

TATTOO: SHL 34L

REG #: 2321784

YEARLING BULL

LOT 5

STANDARD HILL LIGHTNING 35L

MERIT MCLAREN 8020F
 S: DURALTA 8020 INFERNO 42H
 DURALTA 9C EMULATION 32F
 BELVIN DISPUTE 6125
 D: STANDARD HILL ELBA 363G
 STANDARD HILL ELBA 360B

BAR S RANGE BOSS 4002
 MERIT BLACKCLASS 6060D
 DURALTA SPRING FEVER 9C
 DURALTA 56S EMULATION 50U
 HF JUNCTION 18B
 BARBARA OF RING CREEK 65Y
 MINBURN QUANTUM 55Y
 STANDARD HILL ELBA 33Y

Weights	Birth	Feb 4	Weaning	Aug 24	Yearling	Dec 9
	82		650		1040	

EPDs	CE	4.0	BW	0.0	WW	44	YW	78	SC	--	MCE	4.0	MILK	27
------	----	-----	----	-----	----	----	----	----	----	----	-----	-----	------	----

Stylish calving ease bull. He will have a touch more frame than his 42H brothers in the sale this year. All in all they are a very solid sire group. 42H's first heifers have calved recently and they excel in milk and thickness. His dam has her first two calves working as females for us. His maternal grand dam, pictured, is an Elite Dam. Weight Jan 16-1125.



360B

TATTOO: SHL 35L REG #: 2336131 YEARLING BULL

STANDARD HILL CLAW 71L



STANDARD HILL BENGAL 479A HF TIGER 5T
 S: STANDARD HILL FANG 18J STANDARD HILL LADY ANN 23P
 STANDARD HILL ANN 339E SCC BANDO 45A
 STANDARD HILL LADY ANN 20X
 STANDARD HILL MAJOR 350C GVC SETTLER 004X
 D: STANDARD HILL ROXY 77H STANDARD HILL LADY ANN 117X
 STANDARD HILL ROXY 491D MINBURN QUANTUM 55Y
 STANDARD HILL BLACKBIRD 16S

Weights	Birth Jan 19	Weaning Aug 24	Yearling Dec 9
	81	665	1060
EPDs	CE 4.0	BW 0.1	WW 41 YW 75 SC 0.58 MCE 7.0 MILK 28



More leg/frame on this rascal. He is long spined, bold ribbed, and hairy. Should work well on heifers or cows. His young dam is a very sweet fronted, angular, and has great udder traits. The Fang 18J calves are quiet in disposition, well muscled, and long skulled. Weight Jan 16-1150.

TATTOO: SHL 71L REG #: 2321795 YEARLING BULL



Fang 18J Sire of Lots 6 and 7



Ann 339E Grand Dam of Lots 6 & 7



Major 350C Grand Sire of Lot 6

STANDARD HILL PREDATOR 8L



STANDARD HILL BENGAL 479A HF TIGER 5T
 S: STANDARD HILL FANG 18J STANDARD HILL LADY ANN 23P
 STANDARD HILL ANN 339E SCC BANDO 45A
 STANDARD HILL LADY ANN 20X
 DFCC 244B FLO RIDER 22F SIX MILE COMPLETE 244B
 D: STANDARD HILL RAVEN 1J DFCC 9194 LIBBY 13Z
 STANDARD HILL RAVEN 310C EARLY SUNSET FREEDOM 89U
 STANDARD HILL BLACKBIRD 10U

Weights	Birth Jan 30	Weaning Aug 24	Yearling Dec 9
	83	690	1060
EPDs	CE 4.0	BW 0.8	WW 48 YW 86 SC -- MCE 6.0 MILK 32



Another strong Fang calf with moderate birth weight and extra frame. He is easy fleshing and very attractive and sound in his makeup. 8L has a great haircoat and is docile. His dam is much like Grandma pictured, 310C, but has tighter udder suspension. The Flo Rider daughters are superbly uddered. 8L's weight on January 16 was 1150 lbs.

TATTOO: SHL 8L REG #: 2321798 YEARLING BULL





LOT 8



LOT 8

STANDARD HILL GRIT 64L

MERIT STONEY CREEK 4023
S: BEAR CREEK STONEY 32F
BEAR CREEK LASS 32Y

HF PROWLER 43U
MERIT PRIDE 2010
SSA 4336 DENSITY 26T
YOUNG DALE LASS 49R

STANDARD HILL MAJOR 350C
D: STANDARD HILL ROXY 61H
STANDARD HILL BEBE 327A

GVC SETTLER 004X
STANDARD HILL LADY ANN 117X
STANDARD HILL YAHOO 68Y
STANDARD HILL BLACKBIRD 9W

Weights	Birth Jan 21	Weaning Aug 24	Yearling Dec 9
	88	740	1150

EPDs	CE -2.0	BW 3.5	WW 54	YW 94	SC 1.05	MCE 2.0	MILK 25
------	---------	--------	-------	-------	---------	---------	---------

TATTOO: SHL 64L

REG #: 2321792

YEARLING BULL

Final and largest framed member of our Reserve Agribition Pen of Bulls. Grit 64L has a ton of style, muscle, and presence. Couple that with great Angus character, a big ol hip, and strong foot and you get something special. He profiles as a power bull on paper but could prove to have decent calving ease. His young dam is just scratching the surface with her potential. This is an exciting bull to offer for sale. His last Weight, January 16th 1265 lbs.



LOT 9

STANDARD HILL SLATE 17L

MERIT STONEY CREEK 4023
S: BEAR CREEK STONEY 32F
BEAR CREEK LASS 32Y

HF PROWLER 43U
MERIT PRIDE 2010
SSA 4336 DENSITY 26T
YOUNG DALE LASS 49R

SCC BANDO 45A
D: STANDARD HILL PRIDE 338E
STANDARD HILL PRIDE 15X

LLB 1845 BANDO 502X
SCC PRIDE 31X
S A V FINAL ANSWER 0035
STANDARD HILL PRIDE 81U

Weights	Birth Jan 18	Weaning Aug 24	Yearling Dec 9
	84	750	1070

EPDs	CE 3.0	BW 2.1	WW 50	YW 88	SC 1.42	MCE 8.0	MILK 20
------	--------	--------	-------	-------	---------	---------	---------

This guy was the spare for our pen of bulls and fits in well. Great footed, long bodied, powerful enough and still sound and stylish as a cat. His dam is another great Bando daughter that has been great in production. His maternal sister is the dam to Lot 2. Weight on January 16 was 1180 lbs.



TATTOO: SHL 17L REG #: 2321737 YEARLING BULL



LOT 10

LOT 10

STANDARD HILL ROCKY 49L

MERIT STONEY CREEK 4023
 S: BEAR CREEK STONEY 32F
 BEAR CREEK LASS 32Y
 BELVIN DISPUTE 6125
 D: STANDARD HILL ANN 388F
 STANDARD HILL ANN 382C

HF PROWLER 43U
 MERIT PRIDE 2010
 SSA 4336 DENSITY 26T
 YOUNG DALE LASS 49R
 HF JUNCTION 18B
 BARBARA OF RING CREEK 65Y
 B P F SPECIAL FOCUS 504
 STANDARD HILL ANN 367A

Weights	Birth Jan 15	Weaning Aug 24	Yearling Dec 9
	100	815	1240
EPDs	CE -4.0	BW 4.7	WW 65
	YW 108	SC 1.28	MCE 2.0
	MILK 23		

If you want to have heavyweight calves and lots of maternal punch in the replacement pen this guy gets it done. Lots of muscle and style in this guy and he is docile while showing good libido. All along he has been a standout, so much so that he did not fit with our pen of bulls that we took out. His dam is 4 for 4 so far with two sisters in the herd working, and a brother that was a feature in the 2022 sale. Weight on January 16 was 1325 lbs.

TATTOO:
SHL 49L

REG #:
2321757

YEARLING
BULL



DAM



382C

LOT 11

STANDARD HILL STONEY 11L

MERIT STONEY CREEK 4023
 S: BEAR CREEK STONEY 32F
 BEAR CREEK LASS 32Y
 BELVIN DISPUTE 6125
 D: STANDARD HILL ANN 336G
 STANDARD HILL ANN 350D

HF PROWLER 43U
 MERIT PRIDE 2010
 SSA 4336 DENSITY 26T
 YOUNG DALE LASS 49R
 HF JUNCTION 18B
 BARBARA OF RING CREEK 65Y
 MINBURN QUANTUM 55Y
 STANDARD HILL LADY ANN 117X

Weights	Birth Jan 23	Weaning Aug 24	Yearling Dec 9
	92	750	1150
EPDs	CE -2.0	BW 3.4	WW 57
	YW 90	SC --	MCE 5.0
	MILK 24		

Stoney 11L is stout and as long spined as any bull in the offering. Performance type bull that could cover some cows and acres in any terrain. His maternal line is the same that yielded our Major 350C herd-sire. His dam is 3 for 3 producing him as well as two sisters retained in herd so far. Weight on January 16 was 1220 lbs.



117X

TATTOO: SHL 11L REG #: 2321763 YEARLING BULL

Standard Hill Livestock
2 Year Old Angus Bulls

LOT 12



STANDARD HILL SCORCHER 38K

TATTOO: SHL 38K REG #: 2265771 TWO-YEAR OLD BULL

MERIT MCLAREN 8020F
S: DURALTA 8020 INFERNO 42H
DURALTA 9C EMULATION 32F
DFCC 244B FLO RIDER 22F
D: STANDARD HILL ELBA 44H
STANDARD HILL ELBA 378F

BAR S RANGE BOSS 4002
MERIT BLACKCLASS 6060D
DURALTA SPRING FEVER 9C
DURALTA 56S EMULATION 50U
SIX MILE COMPLETE 244B
DFCC9194 LIBBY 13Z
STANDARD HILL MAJOR 350C
STANDARD HILL ELBA 483B

Weights	Birth	Apr 23	Weaning	Nov 12	Yearling	Mar 25
	70		590		860	
EPDs	CE 9.0	BW -1.8	WW 38	YW 67	SC 0.83	MCE 9.0 MILK 33

Heifer bull. Moderate framed and muscular off a first calver himself. His dam is one of a large group of Flo Rider 22F daughters that impress with their production and structural soundness of skeleton and udder. These two year old bulls are athletic and not pushed, they will continue to grow and mature into impressive studs. January 16th weight 1445 lbs.

LOT 13 STANDARD HILL DISPUTE 33K



BELVIN DISPUTE 6125 HF JUNCTION 18B
S: STANDARD HILL DISPUTE 67H BARBARA OF RING CREEK 65Y
STANDARD HILL LADY ANN 79Y HF TIGER 5T STANDARD HILL LADY ANN 28U
STANDARD HILL BENGAL 479A HF TIGER 5T
D: STANDARD HILL ANN 350G STANDARD HILL LADY ANN 23P
STANDARD HILL LADY ANN 117X LLB 557S TRADITION 181U STANDARD HILL LADY ANN 41R

Weights	Birth	Apr 17	Weaning	Nov 12	Yearling	Mar 25
	77		595		885	
EPDs	CE 6.0	BW -0.7	WW 33	YW 57	SC 1.23	MCE 5.0 MILK 27

Deep ribbed, moderate framed calving ease bull. Another option for heifers, this group of two year old bulls is stacked with calving ease. This bull's dam is a moderate 1200 lbs cow that gets it done every year. Maternal quality on both sides of this guys pedigree, such as 79Y (pictured) on the top side and Major 350C's dam 117X on the bottom. Weight on January 16 was 1465 lbs.



79Y

TATTOO: SHL 33K REG #: 2273981 COMING 2-YEAR OLD BULL



LOT 14

STANDARD HILL SMOULDER 62K

MERIT MCLAREN 8020F
 S: DURALTA 8020 INFERNO 42H
 DURALTA 9C EMULATION 32F
 BELVIN DISPUTE 6125
 D: STANDARD HILL ELBA 60H
 STANDARD HILL ELBA 33Y

BAR S RANGE BOSS 4002
 MERIT BLACKCLASS 6060D
 DURALTA SPRING FEVER 9C
 DURALTA 56S EMULATION 50U
 HF JUNCTION 18B
 BARBARA OF RING CREEK 65Y
 HF TIGER 5T
 STANDARD HILL ELBA 28T

Weights	Birth	Apr 22	Weaning	Nov 12	Yearling	Mar 25
		74		505		880

EPDs	CE 8.0	BW -0.8	WW 42	YW 83	SC 0.28	MCE 7.0	MILK 25
------	--------	---------	-------	-------	---------	---------	---------



33Y

Sound structured calving ease bull. From the same cow family that produced Jayce's Elbas that have done very well for him and been favourites of visitors to the farm. Weight January 16 - 1450 lbs.

TATTOO: SHL 62K REG #: 2265795 TWO-YEAR OLD BULL



LOT 15

STANDARD HILL COMPLETE 60K

SIX MILE COMPLETE 244B
 S: DFCC 244B FLO RIDER 22F
 DFCC 9194 LIBBY 13Z
 BELVIN DISPUTE 6125
 D: STANDARD HILL ANN 59H
 STANDARD HILL LADY ANN 24Y

CONNELY COMPLETE 8454
 SIX MILE QUEEN MOTHER 849U
 SOO LINE KODIAK 9194
 LODGE DUCHESS 42T
 HF JUNCTION 18B
 BARBARA OF RING CREEK 65Y
 S A V NET WORTH 4200
 STANDARD HILL LADY ANN 24R

Weights	Birth	May 11	Weaning	Nov 12	Yearling	Mar 25
		82		555		870

EPDs	CE 2.0	BW 1.6	WW 56	YW 93	SC --	MCE 3.0	MILK 26
------	--------	--------	-------	-------	-------	---------	---------



6125

Calving ease option for heifers or cows. He and his paternal sib have exceptional length of body and structural soundness. His sire has stuck around and continues to have a positive impact. The 6125 bull adds growth to the equation. Weight on January 16 was 1540 lbs. This guy like many of the 22F sons has above average testicle.

TATTOO: SHL 60K REG #: 2265792 TWO-YEAR OLD BULL



LOT 16

STANDARD HILL DRAKE 31K

SIX MILE COMPLETE 244B
 S: DFCC 244B FLO RIDER 22F
 DFCC 9194 LIBBY 13Z
 MOHNEN PULSE 533
 D: STANDARD HILL ROXY 346D
 STANDARD HILL BEBE 352B

CONNELY COMPLETE 8454
 SIX MILE QUEEN MOTHER 849U
 SOO LINE KODIAK 9194
 LODGE DUCHESS 42T
 MOHNEN HEARTRATE 1751
 MOHNEN JILT 2360
 MINBURN QUANTUM 55Y
 STANDARD HILL BLACKBIRD 3Y

Weights	Birth	Apr 16	Weaning	Nov 12	Yearling	Mar 25
		87		740		1075

EPDs	CE 6.0	BW -0.9	WW 54	YW 94	SC 1.50	MCE 6.0	MILK 30
------	--------	---------	-------	-------	---------	---------	---------



PULSE

Here is the largest bull of the two year old offering. This bull could definately cover a large group of cows from a structural and libido perspective. He is long spined and deep ribbed individual. His dam was a product of our past AI program, a beautiful cow with a great udder. Weight on January 16 was 1745 lbs in relatively green condition.

TATTOO: SHL 31K REG #: 2265669 TWO-YEAR OLD BULL

LOT 17



STANDARD HILL GRIT 19K

TATTOO: SHL 19K REG #: 2265691 COMING TWO-YEAR OLD BULL

MERIT STONEY CREEK 4023
 S: BEAR CREEK STONEY 32F
 BEAR CREEK LASS 32Y
 STANDARD HILL BENGAL 479A
 D: STANDARD HILL ANN 339F
 STANDARD HILL LADY ANN 20X

HF PROWLER 43U
 MERIT PRIDE 2010
 SSA 4336 DENSITY 26T
 YOUNG DALE LASS 49R
 HF TIGER 5T
 STANDARD HILL LADY ANN 23P
 S A V BISMARK 5682
 STANDARD HILL LADY ANN 33T

Weights	Birth Apr 17	Weaning Nov 12	Yearling Mar 25
	100	700	1025
EPDs	CE -2.0	BW 4.2	WW 52
	YW 95	SC 1.25	MCE 5.0
	MILK 19		

Performance cow bull that is stout muscled and has great Angus character. He is easy to pick out of the pen for his growth and eye appeal. This fella has a pedigree stacked with well known cow maker bulls in the Angus breed. His dam is a 1200 lbs cow with a very nice udder. January 16th weight for Grit 19K was 1610 lbs.

LOT 18 **STANDARD HILL DISPUTE 22K**



BELVIN DISPUTE 6125
 S: STANDARD HILL DISPUTE 67H
 STANDARD HILL LADY ANN 79Y

HF JUNCTION 18B
 BARBARA OF RING CREEK 65Y
 HF TIGER 5T
 STANDARD HILL LADY ANN 28U

STANDARD HILL BENGAL 479A
 D: STANDARD HILL ANN 350F
 STANDARD HILL LADY ANN 117X

HF TIGER 5T
 STANDARD HILL LADY ANN 23P
 LLB 557S TRADITION 181U
 STANDARD HILL LADY ANN 41R

Weights	Birth Apr 17	Weaning Nov 12	Yearling Mar 25
	86	620	915
EPDs	CE 4.0	BW 0.4	WW 38
	YW 66	SC 0.61	MCE 3.0
	MILK 26		

Deep ribbed, long spined, and wide made bull. Double bred to Tiger 5T whose best quality in our herd might be ideal udder structure. Identical pedigree to Lot 13 as they are paternal siblings off of full sisters. These two bulls are very similar bulls except this guys momma is heavier and throws a bit more birthweight. Both worth a look sale day. Weight on January 16 was 1450 lbs.

TATTOO: SHL 22K REG #: 2273980 TWO-YEAR OLD BULL

Standard Hill Livestock
Angus Reference Sires

DURALTA 8020 INFERNO 42H



Inferno is moderate in stature and large in length of body, eye appeal and structural soundness. Backed by many generations of quality dams. We are excited to watch his daughters raise calves this year.

BEAR CREEK STONEY 32F



Stoney left his mark of performance, Angus character, stretch, and foot quality. His young daughters carry large expectations here. His sons have been features in the past few sales and are meat machines.

STANDARD HILL FANG 18J



We were able to use Fang for one breeding season after he was a high seller through the sale. He is docile, strong topped, and thick rumped; a large dimensioned animal. His dam is one to admire.

DFCC 244B FLO RIDER 22F



Flo Rider continues to walk and impress with his progeny. Daughters may be the best uddered paternal group we have. Can't discount the above average testicle, overall mass and soundness of his bulls either.

STANDARD HILL DISPUTE 67H



Dispute 67H was largely used to amplify the impact of his dam Standard Hill Ann 79Y, pictured. She is the right kind and the dam of 367A (dam to Lot 1). 67H's calves are muscular and high volume.

WILBAR SOUTH POINT 114K



New heifer bull with 2024 calves on the ground. Selected from Wilbar's bull sale in 2023 for his soundness, completeness, and his Mayflower dam. He is calving easy and calves are very thick haired.

Standard Hill Livestock
F1 Two-Year Old Bulls



LOT 19

SHL BRICK 69K

CHSF 5Y DEALER 13D
S: STANDARD-HILL DEALER 54G
STANDARD-HILL VIVIAN 114B

CHSF 52U BRIAN 5Y
CHSF 7W ROSE 22A
SHPH 75 DIEHARD 136Y
SHPH 63N VIVIAN 114T

SCC BANDO 45A
D: STANDARD HILL QUEEN 503F
STANDARD HILL QUEEN 21U

LLB 184S BANDO 502X
SCC PRIDE 31X
BASIN RAINMAKER 814Z
STANDARD HILL QUEEN 17S

Weights	Birth	Apr 18	Weaning	Nov 12	Yearling	Mar 25
	60		630		870	
EPDs	CE ---	BW ---	WW --	YW --	SC ---	MCE --- MILK --



DAM

TWIN. Brick impresses with his level lines, thickness, and length. With that high capacity frame he is muscular and smooth with a large top and middle. I also like this guys head and foot. His dam is tremendously long spined and good uddered. Add a little white to your calves.

Weight on January 16 was 1505 lbs.

TATTOO: SHL 69K REG #: UNREGISTERED F1 TWO-YEAR OLD BULL



LOT 20

SHL PREACHER 326K

NJW 73S W18 HOMEGROWN 8Y ET
S: MCCOY 8Y MAVERICK 25E
MCCOY 70Y CONNIE 87A

NJW 73S W18 HOMEGROWN 8Y ET
S: SHF WONDER M362 W18 ET
NJW P606 72N DAYDREAM 73S
JDH 117R EQUITY 70Y ET
MCCOY 30N CONNIE 3W

TC ABERDEEN 759
D: STANDARD HILL LASS 316A
STANDARD HILL LASSIE 39U

C R A BEXTOR 872 520S 608
TC BLACKBIRD 4034
SCA 3299 OF IDEAL 1418
STANDARD HILL LASSIE 29P

Weights	Birth	Apr 13	Weaning	Nov 12	Yearling	Mar 25
	88		675		t920	
EPDs	CE ---	BW ---	WW --	YW --	SC ---	MCE --- MILK --



DAM

Highest growth bull of the F1 division with moderate birthweight. Skeletally extended and free moving. He has large capacity forage conversion equipment like his Aberdeen dam.

Weight on January 16 was 1610 lbs.

TATTOO: SHL 326K REG: UNREGISTERED F1 TWO-YEAR OLD BULL



Open F1 Heifers Sell as Lot 56, see page 34 for details



LOT 21

SHL FALCON 349K

NJW 73S W18 HOMEGROWN 8Y ET SHF WONDER M362 W18 ET
 S: MCCOY 8Y MAVERICK 25E NJW P606 72N DAYDREAM 73S
 MCCOY 70Y CONNIE 87A JDH 117R EQUITY 70Y ET
 MCCOY 30N CONNIE 3W
 RNRF ERIC 220A ANGUS ACRES ERIC 78U
 D: STANDARD HILL ELBA 384D RNRF ELNORA 220S
 STANDARD HILL ELBA 374A S A V FINAL ANSWER 0035
 STANDARD HILL ELBA 106Y

Weights	Birth	Apr 10	Weaning	Nov 12	Yearling	Mar 25
		95		660		920
EPDs	CE ---	BW ---	WW --	YW --	SC ---	MCE --- MILK --



SIRE

Falcon is athletic and sound, deep ribbed like both his parents. Of all the F1 bulls on offer he possesses the least white. As a calf his facial markings resembled a birds head, thus his name. Both sides of his pedigree are highly maternal and daughters should have good udder traits. He was tied for heaviest F1 at yearling weight. Weight on January 16 was 1585 lbs.

TATTOO: SHL 349K REG: UNREGISTERED F1 TWO-YEAR OLD BULL



LOT 22

SHL THOR 46K

CHSF 5Y DEALER 13D CHSF 52U BRIAN 5Y
 S: STANDARD-HILL DEALER 54G CHSF 7W ROSE 22A
 STANDARD-HILL VIVIAN 114B SHPH 7S DIEHARD 136Y
 SHPH 63N VIVIAN 114T
 BELVIN DISPUTE 6125 HF JUNCTION 18B
 D: STANDARD HILL ANN 396F BARBARA OF RING CREEK 65Y
 STANDARD HILL ANN 508D MINBURN QUANTUM 55Y
 STANDARD HILL LADY ANN 73W

Weights	Birth	Apr 27	Weaning	Nov 12	Yearling	Mar 25
		89		660		915
EPDs	CE ---	BW ---	WW --	YW --	SC ---	MCE --- MILK --



SIRE

Thor is deep ribbed and long bodied, high capacity. His dam is one of our largest capacity cows. He has a moderate birth-weight but I would recommend him for cows based on pedigree. We believe these F1 Herford x Angus bulls can provide the ultimate maternal traits; mothering, fertility, efficiency, milk and longevity. Weight on January 16 was 1470 lbs.

TATTOO: SHL 46K REG: UNREGISTERED F1 TWO-YEAR OLD BULL



LOT 23

SHL ESCALADE 357K

CHSF 5Y DEALER 13D CHSF 52U BRIAN 5Y
 S: STANDARD-HILL MATER 23F CHSF 7W ROSE 22A
 STANDARD-HILL 40X IRIS 82A GHC-CT-GUARDIAN 40X
 SHPH 7S IRIS 22Y
 BELVIN DISPUTE 6125 HF JUNCTION 18B
 D: STANDARD HILL QUEEN 395F BARBARA OF RING CREEK 65Y
 STANDARD HILL QUEENY 503C B P F SPECIAL FOCUS 504
 STANDARD HILL QUEEN 21U

Weights	Birth	May 24	Weaning	Nov 12	Yearling	Mar 25
		97		625		910
EPDs	CE ---	BW ---	WW --	YW --	SC ---	MCE --- MILK --



SIRE

Escalade is stretchy, smooth, and can cruise. He has the frame and athleticism to cover a large group of cows. Most docile of the F1 bulls on offer this year. Same cow family as lot 19. His sire has a very strong set of 2023 Hereford replacement heifers that we are excited about.

Weight on January 16 was 1600 lbs.

TATTOO: SHL 357K REG: UNREGISTERED F1 TWO-YEAR OLD BULL

Standard Hill Livestock
Yearling Polled Hereford Bulls

LOT 24



LOT 24

STANDARD-HILL TOP-NOTCH 103L

CHSF 5Y DEALER 13D
S: STANDARD-HILL ACE 96F
STANDARD-HILL GLITTER 24Y
GLENLEES 5D HUMBOLT 1F
D: GLENLEES J IF WILMA 43H
GLENLEES 102 WILMA 47F

CHSF 52U BRIAN 5Y
CHSF 7W ROSE 22A
SQUARE-D PAT 2N 7S
MHFM MISS NED 806H 627S
HAROLDSON'S TOTEM 200Z 5D
RVP 106A CAMEO GIRL 45C
BNC W18 WONDER 102B
GLENLEES DBK 94Z WILMA 37C

Weights	Birth Jan 22	Weaning Aug 24	Yearling Dec 9
	85	685	985

EPDs CE 6.5 BW 0.7 WW 50.1 YW 73.6 SC 1.2 MCE 3.1 MILK 19.3

TATTOO:
SHL 103L

REG #:
C03103953

YEARLING
BULL

Moderate framed tank of a bull, marked right and fuzzy. This guy has a lot going for him. He is moderate in birth weight while showing decent growth. He is large barreled and wide based with a good foot. Analyzing his muscle pattern you will see he is wide over the top and through the rear quarter and carries that down through his stifle. His young dam has a ideal udder conformation and high milk flow. Another top end Ace leading the Hereford pen. Weight Jan 16-1100.

LOT 25 STANDARD-HILL GAMBLER 116L



CHSF 5Y DEALER 13D
S: STANDARD-HILL ACE 96F
STANDARD-HILL GLITTER 24Y
MCCOY 53A MAGNET 109E
D: STANDARD-HILL KARISTA 128H
STANDARD-HILL 15B KARISTA 40E

CHSF 52U BRIAN 5Y
CHSF 7W ROSE 22A
SQUARE-D PAT 2N 7S
MHFM MISS NED 806H 627S
MCCOY 70Y SKYFALL 53A
MCCOY P20 ZENA 1B
STANDARD-HILL HARLAN 15B
SHPH 7S KARISTA 28W

Weights	Birth Jan 17	Weaning Aug 24	Yearling Dec 9
	85	630	1010

EPDs CE 6.2 BW 1.3 WW 43.1 YW 68.0 SC 1.2 MCE 2.8 MILK 16.1



109E

Dark red, marked up Ace son with excellent length of body and eye appeal. He is adequate muscled and capacious enough while maintaining calving ease. I would consider using him on heifers. His 109E sired dam is also long and red, with a quality udder. Love the Ace calves for their strong feet, muscle, and middle dimension. Weight Jan 16-1115.

TATTOO: SHL 116L REG #: C03103959 YEARLING BULL



LOT 26 STANDARD-HILL NITECRAWLER 130L

INNISFAIL WHR X651/723 4013 ET
 S: PCL 4013 JUGERNAUT ET 20J
 PCL STARLET 44U ET 77A
 MCCOY 8Y MAVERICK 25E
 D: STANDARD-HILL MIRAGE 75G
 STANDARD-HILL MIRAGE 274B

Weights	Birth Jan 8	Weaning Aug 24	Yearling Dec 9
	66	630	875

EPDs CE 16.1 BW -3.7 WW 37.4 YW 60.2 SC 1.3 MCE 7.4 MILK 26

Sure fire heifer bull. Sleep easy at calving with this guy on the sire list. He is well balanced and attractively made. His dam was Reserve Champion of the NW Hereford Field Day in 2022 with his sister at side. She is moderate but tanky with a great udder. Weight Jan 16-945.



TATTOO: SHL 130L REG #: C03103949 YEARLING BULL



LOT 27 STANDARD-HILL COLOSSUS 104L

INNISFAIL WHR X651/723 4013 ET
 S: PCL 4013 JUGERNAUT ET 20J
 PCL STARLET 44U ET 77A
 MCCOY 8Y MAVERICK 25E
 D: STANDARD-HILL CLARA 6G
 STANDARD-HILL CLARA 11C

Weights	Birth Jan 24	Weaning Aug 24	Yearling Dec 9
	89	665	995

EPDs CE 4.5 BW 1.2 WW 51.9 YW 85.8 SC 1.5 MCE 2.5 MILK 29.4

104L is impressive from behind with width and depth of quarter and strength of top and rib dimension. I was a little disgusted when this guy emerged with so much white, but make no mistake he has the fundamentals covered. He is cresting up well already too. His dam is a top cow with a bright future that was NW Field Day Champ in '22. Weight Jan 16-1070.



TATTOO: SHL 104L REG #: C03103947 YEARLING BULL



LOT 28 STANDARD-HILL JACK 134L

CHSF 5Y DEALER 13D
 S: STANDARD-HILL ACE 96F
 STANDARD-HILL GLITTER 24Y
 TCF 305A STACKED 609D
 D: STANDARD-HILL HOPE 24F
 STANDARD-HILL HOPE 27C

Weights	Birth Jan 23	Weaning Aug 24	Yearling Dec 9
	98	690	1060

EPDs CE 7.6 BW 1.2 WW 45.4 YW 75 SC 0.7 MCE 1.8 MILK 13.4

Big truck of a bull; wide fendered, long wheel base, spacious interior with width below and above, large engine compartment, high payload capacity, and shag carpet! One deluxe rear wiper. Loaded performance package. A full brother was a feature in last year's sale, sold to Bar TH Ranch. Scurred. He was the heaviest Hereford bull last weigh day Jan16 at 1180.



TATTOO: SHL 134L REG #: C03103943 YEARLING BULL



LOT 29 STANDARD-HILL GAMBIT 113L

CHSF 5Y DEALER 13D
 S: STANDARD-HILL ACE 96F
 STANDARD-HILL GLITTER 24Y
 MCOY 53A MAGNET 109E
 D: STANDARD-HILL KIM 119H
 WCC 69A JESSICA 6375D
 CHSF 52U BRIAN 5Y
 CHSF 7W ROSE 22A
 SQUARE-D PAT 2N 7S
 MHFM MISS NED 806H 627S
 MCOY 70Y SKYFALL 53A
 MCOY P20 ZENA 1B
 HAROLDSONS DELTA ET 69A
 WCC 361X EMMA 375A

Weights	Birth Jan 24	Weaning Aug 24	Yearling Dec 9
	91	730	1020

EPDs	CE 4.5	BW 2.0	WW 48.8	YW 76.5	SC 1.0	MCE 3.0	MILK 20.9
------	--------	--------	---------	---------	--------	---------	-----------



Gambit is a performance bull that is well balanced and sound made. His young dam has a beauty of an udder, is long and large ribbed. One of the larger framed Hereford bulls on offer in this years sale this guy was that heaviest in his weaning weight group.
 Weight Jan 16 at 1140 lbs.

TATTOO: SHL 113L REG #: C03103958 YEARLING BULL



LOT 30 STANDARD-HILL WOLVERINE 149L

INNISFAIL WHR X651 /723 4013 ET
 S: PCL 4013 JUGERNAUT ET 20J
 PCL STARLET 44U ET 77A
 CHSF 5Y DEALER 13D
 D: STANDARD-HILL MAGIE 98G
 SHPH 7S MAGIE 168X
 EFBEEF TFL U208 TESTED X651 ET
 INNISFAIL P230 T723
 NJW 98S DURANGO 44U
 C&T 122L STARLET 9N
 CHAF 52U BRIAN 5Y
 CHSF 7W ROSE 22A
 SQUARE-D PAT 2N 7S
 SHPH 8M MARIGOLD 2U

Weights	Birth Jan 23	Weaning Aug 24	Yearling Dec 9
	98	715	1100

EPDs	CE 0.9	BW 3.8	WW 64.7	YW 99.4	SC 1.4	MCE 1.3	MILK 24.1
------	--------	--------	---------	---------	--------	---------	-----------



Stylish, marked up, dark red Jugernaut son with performance. Level in his lines and attractive in hip structure. Second heaviest bull in the pen at weaning and heaviest at yearling weights. Can't wait to see his sisters udders next year, as the 4013 daughters at Phantom Creek were picture perfect. Recommended for cows. Scurred. Weight Jan 16-1150.

TATTOO: SHL 149L REG #: C03103950 YEARLING BULL



LOT 31 STANDARD-HILL KING 154L

CHSF 5Y DEALER 13D
 S: STANDARD-HILL ACE 96F
 STANDARD-HILL GLITTER 24Y
 SHPH 7S DIEHARD 136Y
 D: STANDARD-HILL VIVIAN 114B
 SHPH 63N VIVIAN 114T
 CHSF 52U BRIAN 5Y
 CHSF 7W ROSE 22A
 SQUARE-D PAT 2N 7S
 MHFM MISS NED 806H 627S
 SQUARE-D PAT 2N 7S
 SHPH 8M DEANA 130T
 SHPH 68L ARISTOCRAT 63N
 SHPH 190J PRIME VECTOR 114L

Weights	Birth Jan 24	Weaning Aug 24	Yearling Dec 9
	94	670	1015

EPDs	CE 6.7	BW 1.5	WW 40.5	YW 65.1	SC 1.1	MCE 3.2	MILK 12.6
------	--------	--------	---------	---------	--------	---------	-----------



Lots of muscle and middle dimension in this well marked Ace son. He is wide topped and hipped with strong heartgirth and thick rear quarter. His dam is a consistent producer with a great udder.
 Weight Jan 16 at 1110 lbs.

TATTOO: SHL 154L REG #: C03103926 YEARLING BULL



LOT 32

STANDARD-HILL GUIDO 194K

CHSF 5Y DEALER 13D
 S: STANDARD-HILL MATER 23F
 STANDARD-HILL 40X IRIS 82A
 BARE MR YOU TUBE 4Y
 D: STANDARD-HILL 4Y MAGIE 168D
 SHPH 8M MARIGOLD 2U

CHSF 52U BRIAN 5Y
 CHSF 7W ROSE 22A
 GHC-CT-GUARDIAN 40X
 STANDARD-HILL 7S IRIS 22Y
 NCX WINCHESTER 745W
 NCX MISS WHIPLASH 3W
 SHPH 9J TUNDRER 8M
 POOR-BOY MAGIE'S NOTES 655L

Weights	Birth Apr 22	Weaning Nov 12	Yearling Mar 25
	89	550	795

EPDs CE 5.8 BW 1.7 WW 39.5 YW 62.5 SC 0.6 MCE 4.7 MILK 12.2



DAM

Smooth bodied, red necked, short marked 23F bull with a moderate birth weight. He is muscular and sound and long bodied like his parents (both high capacity individuals). Complete bull. His sire is a breeding machine with a ton of libido. 194K had to largest testicular development of the Hereford two-year olds at last measure. Weight on January 16 was 1470.

TATTOO: SHL 194K REG #: C03094510 TWO-YEAR OLD BULL



LOT 33

STANDARD-HILL CYCLONE 115K

K-COW BAZINGA 737B
 S: K-COW HARVARD 9H
 K-COW RODAYO 9Z

K-COW YES MAN 22Y
 NCX K-COW SKYLARK 737S
 MSU TCF REVOLUTION 4R
 K-COW RODAYO 52R

STANDARD-HILL INNOVATOR 1C
 D: STANDARD-HILL 1C IRIS 16E
 STANDARD-HILL 7Y IRIS 22C

FCC 2U HARLAN 7Y
 STANDARD-HILL VIRGINIA 1A
 FCC 2U HARLAN 7Y
 SHPH 62T IRIS 16W

Weights	Birth Apr 29	Weaning Nov 12	Yearling Mar 25
	93	640	920

EPDs CE -1.8 BW 4.7 WW 52.8 YW 83.4 SC 0.7 MCE -0.8 MILK 13.5



22C

Highest performing bull in this group being number one in actual weight at weaning and yearling times. Recommended for use on cows. He has lots of pigment and rib dimension and has the frame and libido to cover a group of females. His weight on January 16 was 1550 lbs.

TATTOO: SHL 115K REG #: C03094515 TWO-YEAR OLD BULL



LOT 34

STANDARD-HILL KING 136K

CHSF 5Y DEALER 13D
 S: STANDARD-HILL ACE 96F
 STANDARD-HILL GLITTER 24Y

BARE MR YOU TUBE 4Y
 D: STANDARD-HILL 4Y CLARA 66E
 SHPH 28U ANNABELLE 70Z

CHSF 52U BRIAN 5Y
 CHSF 7W ROSE 22A
 SQUARE-D PAT 2N 7S
 MHFM MISS NED 806H 627S
 NCX WINCHESTER 745W
 NCX MISS WHIPLASH 3W
 SHPH 2N BEEFMAN 28U
 SHPH 50T RENA 74W

Weights	Birth Apr 18	Weaning Nov 12	Yearling Mar 25
	88	620	835

EPDs CE 6.2 BW 0.2 WW 40.7 YW 66.3 SC 0.9 MCE 3.9 MILK 15.7



DAM

Round muscled and ribbed, long bodied bull with lots of bull character. His design reminds me a lot of Ace as a young bull. He has a nice tight sheath and moderate birthweight. His dam is a tank with huge rib dimension and length of skeleton, and a good udder. His weight on January 16 was 1435 lbs.

TATTOO: SHL 136K REG #: C03094518 TWO-YEAR OLD BULL



LOT 35 STANDARD-HILL LUIGI 139K

CHSF 5Y DEALER 13D
 S: STANDARD-HILL MATER 23F
 STANDARD-HILL 40X IRIS 82A
 ANL SI 425X UNTAPPED 94B
 D: STANDARD-HILL 94B JANNA 83E
 STANDARD-HILL JANNA 110C

CHSF 52U BRIAN 5Y
 CHSF 7W ROSE 22A
 GHC-CT-GUARDIAN 40X
 STANDARD-HILL 7S IRIS 22Y
 TH 89T 743 UNTAPPED 425X ET
 ANL MD 13S MINDY 182W
 FCC 2U HARLAN 7Y
 TALECO 13R JANNA 37U

Weights	Birth	May 09	Weaning	Nov 12	Yearling	Mar 25
		97		600		830

EPDs CE -0.4 BW 4.1 WW 52.2 YW 83.9 SC 0.9 MCE -1.2 MILK 15.5



Smooth made, red necked, short marked 23F son. He has one pigmented eye. Level in his lines and smooth striding, this guy should cover some cows. Our two year olds are developed on a high forage diet and grass for a summer before selling. They are athletic and will continue to grow and impress. Weight on January 16 was 1455 lbs.

TATTOO: SHL 139K REG #: C03094519 TWO-YEAR OLD BULL



LOT 36 STANDARD-HILL MACK 132K

CHSF 5Y DEALER 13D
 S: STANDARD-HILL MATER 23F
 STANDARD-HILL 40X IRIS 82A
 JNHR 511W MAX 151Z
 D: STANDARD-HILL 151Z MAGIE 46D
 STANDARD-HILL 62T MAGIE 181A

CHSF 52U BRIAN 5Y
 CHSF 7W ROSE 22A
 GHC-CT-GUARDIAN 40X
 STANDARD-HILL 7S IRIS 22Y
 JNHR STOCKTOWN 511W
 JNHR 8U ERIN 715X
 SHPH 63N CANNON 62T
 SHPH 98R PARIS 127U

Weights	Birth	Apr 18	Weaning	Nov 12	Yearling	Mar 25
		96		630		895

EPDs CE -1.8 BW 4.7 WW 52.8 YW 83.4 SC 0.7 MCE -0.8 MILK 13.5



Smooth boned, long bodied bull with lots of rib. His dam is another tank with lots of capacity and milk. Mack had the second largest weight at weaning and yearling times. I would use this guy on cows to enhance maternal traits. Weight on January 16 was 1515 lbs.

TATTOO: SHL 132K REG #: C03094506 TWO-YEAR OLD BULL



LOT 37 STANDARD-HILL STANFORD 151K

K-COW BAZINGA 737B
 S: K-COW HARVARD 9H
 K-COW RODAYO 9Z
 GHC QUIGLEY 20B
 D: STANDARD-HILL MEADOW 90F
 SQUARE-D ROBERTA 653U

K-COW YES MAN 22Y
 NCX K-COW SKYLARK 737S
 MSU TCF REVOLUTION 4R
 K-COW RODAYO 52R
 SHF MOORE R117 240
 GHC MISS KAREN 141U
 SQUARE-D RANCHMAN 257R
 SQUARE-D GINA 753R

Weights	Birth	Apr 16	Weaning	Nov 12	Yearling	Mar 25
		89		490		715

EPDs CE 2.0 BW 3.1 WW 47.6 YW 76.0 SC 0.9 MCE -1.4 MILK 14.7



Marked up Harvard 9H son with a moderate birthweight. You'll love all the red on this fella. He is smooth made and attractive. There is potential for him to work on heifers, will work for cows for sure. His pedigree is very maternal. His dam is moderate, large ribbed with a great udder, much like her dam, pictured. Weight on January 16 was 1325 lbs.

TATTOO: SHL 151K REG #: C03094525 TWO-YEAR OLD BULL

Standard Hill Livestock
Polled Hereford Reference Sires

STANDARD-HILL ACE 96F



Ace's calves are impressive with large middles, round muscle, long body, deep heel, wide headed, and moderate frame. Daughters continue to come online this year, glad to have him in the tank.

PCL 4013 JUGERNAUT ET 20J



Jugernaut has 3 lots in the sale. His true test this year is that he got all our January calvers. So far, so good, all calved in cycle one. We look for him to pass muscle, growth and maternal prowess.

STANDARD-HILL MATER 23F

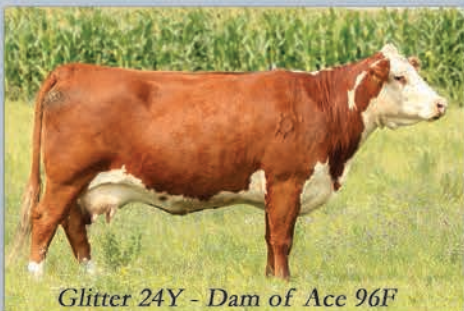


Mater is a performance bull with a lot of red meat. He is an aggressive breeding bull. He'd breed the whole herd and look good doing it. Great pen of April born replacement heifers off him from 2023.

K-COW HARVARD 9H



Harvard was selected from K-Cow for his squareness of frame, muscle, and thickness throughout. He is a good balance of calving ease and performance. His first heifers calve in '24 and show promise.



Glitter 24Y - Dam of Ace 96F



Dealer 13D - Sire of Ace and Mater



Future Sire - Square-D Jaguar 669J





Welcome to the 2024 Standard Hill/Eye Hill Connection Sale. We want to thank Stephen & Brennan and families for inviting us to join them at their annual sale. It is a fun and rewarding week working with these two families and friends.

The years seem to go by quickly and the boys are growing up quickly as well. Rylen graduated from High school in June of 2023 and is out working while he figures out his future plans. Nevan is in grade 12 and figuring out his future. We are grateful for their help on the farm.

2023 was another interesting year weather wise but the cattle seem to do well regardless of the environmental changes around them. The cows are raising big, good quality calves and the bull pen is a result of their hard work. The replacement females are also great quality and make us excited about the future.

We want to thank the buyers from last year's sale for your trust in our program. If you are interested or have any questions about the sale offering please don't hesitate to call myself, Stephen, Brennan, or Shane Castle. The cattle are available for viewing any time before the sale and we hope to see many of you on March 8 at the Standard Hill farm.

Michael, Jeanette, Rylen and Nevan Gerlinsky



MG Angus
Yearling Angus Bulls



LOT 38

MGA 8020 INFERNO 214L

MERIT MCLAREN 8020F
S: DURALTA 8020 INFERNO 42H
DURALTA 9C EMULATION 32F
STANDARD HILL BENGAL 479A
D: STANDARD HILL ANN 348C
STANDARD HILL LADY ANN 14X

BAR S RANGE BOSS 4002
MERIT BLACKCLASS 6060D
DURALTA SPRING FEVER 9C
DURALTA 56S EMULATION 50U
HF TIGER 5T
STANDARD HILL LADY ANN 23P
S A V FINAL ANSWER 0035
STANDARD HILL LADY ANN 23U

Weights	Birth Jan 15	Weaning Aug 24	Yearling Dec 9
	88	735	1090
EPDs	CE 8.0	BW -0.7	WW 38
		YW 74	SC 0.69
		MCE 8.0	MILK 25



DAM

214L has good structure, excellent scrotal development, lots of hip shape with width over the top and spring & depth of rib. His mother has an impeccable udder for an 8 yr old with massive spring of rib & sound structure. Inferno 42H is leaving an impressive set of calves that have extra muscle shape & calving ease. 214L can be used of heifers for calving ease or breed him to cows to add extra pounds at weaning.

TATTOO: MGA 214L REG #: 2335984 YEARLING BULL



Inferno 42H - sire of Lot 38



Fang 18J - sire of Lot 39



Raven 310C - Grand Dam of Lot 39



LOT 39

MGA FANG 201L

STANDARD HILL BENGAL 479A
S: STANDARD HILL FANG 18J
STANDARD HILL ANN 339E
STANDARD HILL MAJOR 350C
D: STANDARD HILL RAVEN 1H
STANDARD HILL RAVEN 310C

HF TIGER 5T
STANDARD HILL LADY ANN 23P
SCC BANDO 45A
STANDARD HILL LADY ANN 20X
GVC SETTLER 004X
STANDARD HILL LADY ANN 117X
EARLY SUNSET FREEDOM 89U
STANDARD HILL BLACKBIRD 10U

Weights	Birth Jan 15	Weaning Aug 24	Yearling Dec 9
	95	775	1160
EPDs	CE -1.0	BW 2.6	WW 49
		YW 92	SC 0.76
		MCE 4.0	MILK 33



DAM

201L is sired by SHL Fang 18J that Shane Castle purchased in 2021 and we were fortunate to use him before he went south. He is a bull with a lot of muscle shape, width & depth of rib, excellent scrotal development, and excellent structure. His mother has an excellent udder, excellent structure, and added body length. This is only her second calf and already proving her worth. Duane Bazylinski purchased her bull calf last year. Would recommend this guy for cows.

TATTOO: MGA 201L REG #: 2335983 YEARLING BULL



On behalf of the Schachtel family and Eye Hill Stock farm welcome you to the Red Angus section of the bull sale. We are very excited to once again work with the Myer and Gerlinksy families. I can't thank all our past customer and future customers enough for the support and taking time to look at our offering. This time of the year the catalogues flock to the mailboxes in droves and there are lots of options; I appreciate that we are one of them.

2023 reflecting back was a mixed bag of things both positive and some not as ideal. However; it was sure fun to hear the success stories of the hard-working ranchers on the value they got for their calves and the cull market holding strong. I tip my hat to everyone hanging in all waiting for this next phase of the cattle cycle. What does this year hold? Who knows? But the fundamentals look positive so I think we remain optimistic, enjoy the success stories and have some fun along the way. Whether you need a bull, heifers or not please join us for an afternoon away from chores, enjoy a good meal, some great hospitality, and visit with like-minded people. My favourite part of the bull sale is the camaraderie that happens before and after the sale.

We are proud of the bulls we have on offer this year. From new AI sires, proven walking bulls, I feel there is a diverse set of genetics; many of them being outcross. There's lots of new exciting genetics for repeat customers. The heifer bull section is strong with some unique curve benders and on the cow bull section there are some real rancher bulls that will get out and work well in the cowherd and leave you some great replacements. Our focus has always been the cow herd; cows need to be sound, easy fleshing, with great structure or they hit the road. That being said we decided to add a unique lot this year and offering the pick of our 2023 replacement heifer calves. It will be a great way to showcase the "sisters" of the bull pen. The commercial heifer pens are as strong as ever with some great groups from some outstanding producers.

The bulls were weaned on Sept. 1 with no creep feed. Since weaning they were developed on a moderate growing ration to promote longevity and adequate growth. Pictures and videos were taken Jan. 24. The bulls change rapidly at this age so if you need updated video please contact us. Better yet you are welcome to tour the bulls anytime leading up to sale day; we would love to show you their mothers and their sisters. We are only 15 minutes east of Lloydminster. Please feel free to call with any questions. Thanks.

Eye Hill Stock Farm

The Schachtels
Brennan, Taryn
Resch, Lindi
Marshall, SK



Pius and Theresa, Macklin, SK

Eye Hill Stock Farm
Pick of 2023 Replacement Heifers

LOT 40

Sample of previous heifers sold in the Touch of Class Sale >



2023 was quite a year with a great fall calf run, long mild fall, and a very large heifer calf crop. We have been in purebred industry coming up to 30 years now and felt it was time to try something different. I feel that we should showcase some of the maternal side of what we do. We have sold a select handful of females at the Touch of Class since 2014, met a great group of people along the way and been fortunate to have some very successful sales. To celebrate this year, I felt it was only fitting to offer up the buyer's choice of the 2023 heifer calves. It was a heifer heavy year in 2023 and I feel this is our deepest set yet. These are the sisters to the bulls and there are daughters of Common Sense, Regal, Rockefeller, and Navigator. I should also mention that 314A has a daughter in there, as well as an ET daughter of 126S who started our whole Syringa cow family. There will be 30 to choose from and the plan is to showcase a select few at the sale. A detailed list of the pedigrees and information will be available before and at the sale. Better yet come for a tour and we can go through the heifers and their mothers. Selection to be made by April 30/24. We would like to retain the right to a future flush in the selected female at our expense and the buyer's convenience.



Some of the Dams of 2023 replacement heifers



Eye Hill Stock Farm
Yearling Red Angus Bulls



LOT 41

RED EYE HILL ROCKEFELLER 3L

RED 5L BOURNE 117-48A
S: RED DAHLKE ROCKEFELLER 009H
RED DAHLKE MS HILTON 13F
RED SSS N. KING 652T
D: RED EYE HILL SYRINGA 1439
RED BAYSHORE SPICE 126S

RED 5L ADVANTAGE 3267-221Y
RED 5L ROXIE 854-117
RED BIEBER CLATOMIC C218
RED DAHLKE MS HILTON 263C
RED 5L NORSEMAN KING 2291
CROWFOOT BLACKBIRD 3023N
RED PIRO NEW BRAND 110L
RED GEIS SYRINGA 125'03

Weights	Birth	Jan 4	Weaning	Sep 1	January 19
		76		860	1275

EPDs CE 9.0 BW -1.0 WW 42 YW 71 SC -- MCE 6.0 MILK 29

Dark red curve bender! You will travel a lot of miles to find a bull with a spread from birth to weaning. This Rockefeller son checks a lot of boxes and is built right from the ground up. His dam; the 1439 cow is one of our best cows with offspring in the herds of Cockburn Red Angus, Royal Rock Angus as well as a bull we used in our own herd. She also is the grandam of lot 43 and will be entering flush program this year. Retaining 1/3 semen interest.



TATTOO: PBS 3L REG #: 2317950 YEARLING BULL



LOT 42

RED EYE HILL ROCKEFELLER 17L

RED 5L BOURNE 117-48A
S: RED DAHLKE ROCKEFELLER 009H
RED DAHLKE MS HILTON 13F
RED SIX MILE RUFF RIDE 686A
D: RED SPITTALBURN SADONA 733E
RED SPITTALBURN SADONA 106Y

RED 5L ADVANTAGE 3267-221Y
RED 5L ROXIE 854-117
RED BIEBER CLATOMIC C218
RED DAHLKE MS HILTON 263C
RED SIX MILE RAWHIDE 222X
SUNBERRY INDEED 20Y
RED SIX MILE U GO HUGO 525U
RED SPITTALBURN SADONA 910W

Weights	Birth	Jan 12	Weaning	Sep 1	January 19
		78		785	1215

EPDs CE 6.0 BW -0.7 WW 46 YW 79 SC -- MCE 2.0 MILK 30

This Rockefeller son sure patterns well with his paternal brother. An absolute tank, strong topped with an awesome hair coat. You don't find many bulls with this kind of hip with such a modest birth weight. His mom is an absolute tank that annually brings in a top calf every year.



TATTOO: PBS 17L REG #: 2317961 YEARLING BULL



LOT 43

RED EYE HILL REGAL 24L

FRASER POKER FACE 613D
S: RED FRASER REGAL 909G
RED FRASER MISS 601D
RED FLYING K NAVIGATOR 25G
D: RED EYE HILL SYRINGA 27J
RED EYE HILL SYRINGA 1439

VISION UNANIMOUS 1418
RED HOWE DYNA QUEEN 241A
RED BRYLOR RED KODIAK 3A
RED FRASER MISS 481B
RED VGW SPOT LITE 772
RED FLYING K DUCHESS 25C
RED SSS N. KING 652T
RED BAYSHORE SPICE 126S

Weights	Birth	Jan 18	Weaning	Sep 1	January 19
		72		730	1060

EPDs CE 7.0 BW 0.6 WW 52 YW 81 SC -- MCE 8.0 MILK 16

Really solid Regal son that will work well in the heifer pasture. He is a nicely balanced bull that is smooth made and puts a lot of good things together. His dam is a beautifully made cow out of the 1439 cow.



TATTOO: PBS 24L REG #: 2320721 YEARLING BULL



LOT 44

RED EYE HILL REDMAN 25L

RED 5L NORSEMAN KING 2291
 S: RED RMJ REDMAN 1T
 CROWFOOT KURUBA 4033P

RED RACK BUCC 54C
 D: RED KENRAY ROSE 106F
 RED KENRAY ROSE 14D

RED VGW KING OF THE WEST
 RED NORSEMAN 1312 PJM
 O C C HUNTER 928H
 RED CROWFOOT KURUBA 2030M

RED SIX MILE BUCC 324Y
 RED RACK MINNIE 308X
 RED MAR MAC INDICATOR 30Z
 RED KENRAY ROSE 51W

Weights	Birth	Jan 21	Weaning	Sep 1	January 19
		90		840	1285

EPDs	CE 2.0	BW 1.9	WW 39	YW 71	SC --	MCE 3.0	MILK 26
------	--------	--------	-------	-------	-------	---------	---------

TATTOO: PBS 25L REG #: 2320723 YEARLING BULL



SIRE

What a powerhouse! Made right, long spined, great hiped; with a great haircoat. A real puppy dog in the pen, he's quickly noticed amongst visitors. These Redman cattle have been extremely popular across the industry and a few of his daughters are our top cows. His dam is a powerhouse cow we purchased from Kenray Ranch that has done a great job.



LOT 45

RED EYE HILL COMMON SENSE 31L

RED REDS SENECA 731C
 S: RED RREDS COMMON SENSE G933
 RED PIE REBELLA 55A

RED MLK CRK LANCER 0119
 D: RED EYE HILL ELBA 1636
 RED EYE HILL ELBA 1010

RED BIBBER ROLLIN DEEP Y118
 RED RREDS ASTER 309A
 RED PIE CODE RED 9058
 RED RAISLAND REBELLA 314-606

RED BUF CRK LANCER-F L297
 RED MLK CRK EMU MAR 812
 RED LAZY MC SPLASH 14T
 RED GET-ALONG RUTHE 0164

Weights	Birth	Jan 21	Weaning	Sep 1	January 19
		86		785	1205

EPDs	CE 1.0	BW 1.7	WW 41	YW 71	SC --	MCE 4.0	MILK 22
------	--------	--------	-------	-------	-------	---------	---------

TATTOO: PBS 31L REG #: 2326880 YEARLING BULL



DAM

A meat machine! Deep sided, long spined, great haircoat, with a bunch of growth. A real cattleman's bull. One of the first sons of Common Sense to sell in Canada; he was the only bull calf we got off of him in 2023 and he's a great one. The females off Common Sense follow the same pattern and will be mainstays in the herd for years to come. Out of a powerful no miss Lancer daughter.



LOT 46

RED EYE HILL NAVIGATOR 35L

RED VGW SPOT LITE 772
 S: RED FLYING K NAVIGATOR 25G
 RED FLYING K DUCHESS 25C

DFK ELIMINATOR 152B
 D: EYE HILL SYRINGA 51F
 RED EYE HILL SYRINGA 904

RED 35CC NAVIGATOR A448
 RED VGW W054-HAZY 1390
 RED JRA ESCALADE 76A
 RED FLYING K TAMMY 103X

S A V ELIMINATOR 9105
 RED DFK MISS SHIVER 6X
 RED LAZY MC SPLASH 14T
 RED BAYSHORE SPICE 1265

Weights	Birth	Jan 30	Weaning	Sep 1	January 19
		76		760	1170

EPDs	CE -0.5	BW 2.9	WW 38	YW 66	SC --	MCE -0.5	MILK 30
------	---------	--------	-------	-------	-------	----------	---------

TATTOO: PBS 35L REG #: 2320735 YEARLING BULL



DAM

This calf pictured speaks for himself. He has a lot of character and great muscle pattern. We don't keep twin bull calves that often but his mother raised 2 full brothers to a whopping combined 1500 on her own! His full brother is equally as good, if not for an injury would be selling right beside him. His dam is a beautifully made, near perfect uddered Syringa cow.



LOT 47 RED EYE HILL NAVIGATOR 69L

RED VGW SPOT LITE 772
 S: RED FLYING K NAVIGATOR 25G
 RED FLYING K DUCHESS 25C

RED FLING K ROOSEVELT 46C
 D: RED EYE HILL SYRINGA 11H
 RED EYE HILL SYRINGA 13F

RED 35CC NAVIGATOR A448
 RED VGW W054-HAZY 1390
 RED JRA ESCALADE 76A
 RED FLYING K TAMMY 103X

RED BIEBER ROOSEVELT W384
 RED FLYING K LANA 185Z
 RED FLYING K BOSS 95C
 RED EYE HILL SYRINGA 1416

Weights	Birth	Mar 11	Weaning	Sep 1	January 19
		78		740	1090
EPDs	CE 4.0	BW 1.2	WW 41	YW 64	SC -- MCE 4.0 MILK 29

Moderate made, dark red and right in so many ways. He's awfully hard to fault. You don't find heifer bulls with this kind of hip that often. Plus he won't even be a year of age at sale day! If we didn't have so many females crossing back on both sides of his pedigree, he wouldn't be offered in his entirety. His dam is a great young Syringa cow tracing back to one of the most cows noticed on the farm in 13F. Retaining 1/3 semen interest.

TATTOO: PBS 69L REG #: 2329163 YEARLING BULL



LOT 48 RED EYE HILL NAVIGATOR 42L

RED VGW SPOT LITE 772
 S: RED FLYING K NAVIGATOR 25G
 RED FLYING K DUCHESS 25C

RED MLK CRK LANCER 0119
 D: RED EYE HILL MS CRESTON 1617
 RED HOWE MS CRESTON 39A

RED 35CC NAVIGATOR A448
 RED VGW W054-HAZY 1390
 RED JRA ESCALADE 76A
 RED FLYING K TAMMY 103X

RED BUF CRK LANCER-F 297
 RED MLK CRK EMU MAR 812
 RED YY ROCKET 97W
 RED HOWE MC CRESTON 79Y

Weights	Birth	Feb 07	Weaning	Sep 1	January 19
		84		730	1125
EPDs	CE 5.0	BW 0.7	WW 43	YW 66	SC -- MCE 4.0 MILK 22

Same pattern as the other Navigators, I really like how they are designed and tough to beat how dark cherry red he is. He's a bull you could use many different ways, whether it be heifers or cows. Either way you will be happy with the daughters that he leaves behind. His dam gets the job done bringing in a top calf every fall.



TATTOO: PBS 42L REG #: 2327797 YEARLING BULL



LOT 49 RED EYE HILL LEDGER 41L

RED SSS HIGH ROLLER 440F
 S: RED MOOSE CREEK 51J
 RED MOOSE CREEK VIMEY 80A

RED COCKBURN COWBOY KIND 754E
 D: RED EYE HILL MS CRESTON 10H
 RED HOWE MS CRESTON 1502

RED SSS APPROVAL 667D
 RED SSS DYNA 688X
 RED HOWE DESIGNER 63X
 RED MOOSE CREEK VIMEY 53U

RED PIE THE COWBOY KIND 343
 RED COCKBURN MS HAUCK 459W
 RED XO CROWFOOT SHINE 235Z
 RED HOWE MS CRESTON 39A

Weights	Birth	Feb 06	Weaning	Sep 1	January 19
		78		690	1085
EPDs	CE 4.0	BW 0.4	WW 45	YW 77	SC -- MCE 8.0 MILK 21

Long bodied, dark, smooth made with a great haircoat; I think he's one of the top heifer bulls in the offering. He is full of character and has been parading around like a herd bull since mid-summer. Expect him to cover some ground in the heifer pasture. His dam is one of our top young cows that hasn't missed yet.



TATTOO: PBS 41L REG #: 2327796 YEARLING BULL



LOT 50 RED EYE HILL BOLD EDITION 4L

RED FINE LINE MULBERRY 26P
 S: RED HOWE BOLD EDITION 80T
 RED HOWE MS DUCHESS 144L

RED GEIS KNIGHT HAWK 27'05
 D: RED GEIS MISS POTEET 68'10
 RED RIVERDALE MISS POTEET 368L

RED COMPASS MULBERRY 449M
 RED DUS FAYETTE 8G
 RED CUMNOCK SARIO 252H
 RED WBR DUCHESS 43'96

RED GEIS KNIGHT HAWK 14'02
 RED JD LANN BLOCKANA 5M
 RED SSS BOMBER 789G
 RED RIVERDALE COUNTESS 30F

Weights	Birth	Jan 04	Weaning	Sep 1	January 19
		92		775	1165

EPDs	CE	-4.0	BW	4.4	WW	42	YW	68	SC	--	MCE	7.0	MILK	21
------	----	------	----	-----	----	----	----	----	----	----	-----	-----	------	----



Old twist of genetics. I absolutely love the Bold Edition cows at Howe Red Angus. To be honest I was hoping this one was a heifer going back to one of best cows on the farm in 68X. However, if you want to inject some frame, body length and retain a wicked set of females that will last a long time this is the bull to buy.

TATTOO: PBS 4L REG #: 2317951 YEARLING BULL



LOT 51 RED EYE HILL NEXT EDITION 11L

RED FINE LINE MULBERRY 26P
 S: RED HOWE BOLD EDITION 80T
 RED HOWE MS DUCHESS 144L

FRASER POKER FACE 613D
 D: RED FRASER MISS 802F
 RED FRASER MISS 601D

RED COMPASS MULBERRY 449M
 RED DUS FAYETTE 8G
 RED CUMNOCK SARIO 252H
 RED WBR DUCHESS 43'96

VISION UNANIMOUS 1418
 RED HOWE DYNA QUEEN 241A
 RED BRYLOR RED KODIAK 3A
 RED FRASER MISS 481B

Weights	Birth	Jan 04	Weaning	Sep 1	January 19
		92		835	1190

EPDs	CE	0.5	BW	3.1	WW	49	YW	80	SC	--	MCE	6.5	MILK	19
------	----	-----	----	-----	----	----	----	----	----	----	-----	-----	------	----



An embryo son out of 802F. His maternal siblings have sold to Golden Sunset Ranch and CD Land and Cattle in the previous two sales. Long spined and dark red. If you need to add some power in the herd and maintain the maternal component this bull has a lot to offer.

TATTOO: PBS 11L REG #: 2340442 YEARLING BULL



LOT 52 RED EYE HILL LEGEND 56L

RED RINGSTEAD KARGO 215U
 S: RED JYL LEGEND 83G
 RED JYL MISS DEAL 89C

RED WRAZ OVERDRIVE 157E
 D: RED WRAZ KURUBA RUBY 230G
 RED BLAKE'S MS GRAVITY 72X

RED RINGSTEAD KARGO 107M
 RED RINGSTEAD MS EQUAL 589P
 RED WHEEL JACK 80A
 RED JYL MISS DEAL 4A

RED DURALTA 275X BRUTE 135B
 RED NU-HOIZON EBONY 117Y
 RED FINE LINE MULBERRY 26P
 RED HOWE MS GRAVITY 33T

Weights	Birth	Feb 25	Weaning	Sep 1	January 19
		80		705	1155

EPDs	CE	4.0	BW	1.8	WW	50	YW	76	SC	--	MCE	7.0	MILK	24
------	----	-----	----	-----	----	----	----	----	----	----	-----	-----	------	----



An in-dam purchase from the great Wraz dispersal. A very stylish heifer bull prospect that is smooth made and has a little extra frame to him. His dam is a powerful dark red cow that is built to last for many years.

TATTOO: PBS 56L REG #: 2329158 YEARLING BULL



LOT 53

RED EYE HILL TWISTER 50L

RED LINES TWISTER 51C
 S: RED LINES NEW TWIST 27J
 RED LINES COUNTRESS 29X
 RED FLYING K NAVIGATOR 25G
 D: RED EYE HILL MISSEY 77J
 RED SPITALBURN MISSEY 773E
 RED LAZY MC TWISTER 154A
 RED T-S SOXRO 26J
 RED LINES SENSATION 2N
 RED LINES COUNTRESS 20P
 RED VGW SPOT LITE 772
 RED FLYING K DUCHESS 25C
 RED SIX MILE RUFF RIDE 686A
 RED SPITALBURN MISSEY 314A

Weights	Birth	Feb 17	Weaning	Sep 1	January 19
		72		635	1030
EPDs	CE 8.0	BW 0.0	WW 39	YW 65	SC -- MCE 7.0 MILK 27

Sleep easy heifer bull. Built to calve with ease with some hip to him. Fresh genetics for repeat customers. Traces back to 314A on the dam side of things.

TATTOO: PBS 50L REG #: 2329154 YEARLING BULL



LOT 54

RED EYE HILL ROCK 61L

RED WRAZ BIG ROCK 7D
 S: RED WRAZ BIG ROCK 140H
 RED JB WINTER ICECAP 9019
 RED U2 MISSION 61W
 D: RED GEIS SAMARIE 305'11
 RED GEIS SAMARIE 234'96
 RED BAK 58 BIG ROCK 121Y
 RED WRAZ SKIJA 67A
 RED YY SQUIRE 334N ET
 RED BROX ICECAP 24N
 RED LJC MISSION STATEMENT P27
 RED U-2 STORMY 205M
 RED GARA HEAVENLY 65C
 RED GEIS SAMARIE 151'92

Weights	Birth	Mar 04	Weaning	Sep 1	January 19
		88		680	1050
EPDs	CE 3.0	BW 1.4	WW 35	YW 62	SC -- MCE 3.0 MILK 21

I have really admired this calf for a long time. Just an early March born bull I think he has a lot to offer. Made right in so many ways with a great haircoat. His dam is a awesome productive cow that just turned 13 and still looks like she's 6.



TATTOO: PBS 61L REG #: 2340459 YEARLING BULL



LOT 55

RED EYE HILL GB 82L

RED HOWE HEAD GAMES 56G
 S: RED BRYLOR RM GAMEBOY 30J
 RED CIRCLE G BLACKBIRD 912G
 RED WRAZ GHOST RIDER 111C
 D: RED EMBER TIARA 19H
 RED EMBER TIARA 21C
 RED U2 HEAD GAMES 330E
 RED HOWE MS ENVIOUS 128E
 RED 9 MILE FRANCHISE 6305
 RED DIAMOND T BLACKBIRD 1692
 RED BRYLOR JKC GHOST RIDER108Y
 RED WRAZ SHEBA 40X
 RED WRAZ BIG ROCK 60Z
 RED WRAZ TIARA 6A

Weights	Birth	Mar 23	Weaning	Sep 1	January 19
		68		620	1010
EPDs	CE 1.0	BW 2.9	WW 45	YW 86	SC -- MCE 5.0 MILK 25

Sleep easy heifer bull, dark red with a nice muscle pattern. An in-dam purchase from the Wraz dispersal. Note he is a twin, but the way he's built he most certainly will calve heifers with ease.



TATTOO: PBS 82L REG #: 2329171 YEARLING BULL

Eye Hill Stock Farm
Reference Sires

The 2023 bull sale reference sire group is unique and diverse, as there are many more than usual. This stems to 2 main factors. One being that we had a large heifer calf year in the AI breeding group. Two being we purchased a couple females from the highly regarded Wraz program with unique services sires. There are lots of fresh genetics for repeat customers. Just to speak on a couple: the **Navigators** are the largest sire group. His sons exhibit his length of body, structure and his dark red hair coat. He has an awesome foot structure and his daughters are beautifully made awesome uddered cows. The **Rockfellers** exhibit light birth with explosive growth. He's an AI sire that was extremely popular, and with no semen being produced his offspring are a valuable commodity. After 2 years of calves, he has proven a short gestation bull as all his calves typically come 5-7 day in advance of there due date. The other reference sires include the \$50,000 US valued **Common Sense**, the great **Redman 1T**, **Howe Bold Edition 80T**, the dependable **Regal**, as well as our new herd sire **51J** we purchased from Moose Creek. All these sires were selected and utilized based on overall structure, performance, predictability, fleshing ability and the dam behind them.



RED DAHLKE ROCKFELLER 009H
sire of Lots 41 and 42



RED FLYING K NAVIGATOR 25G
sire of Lots 46, 47 and 48



REDMAN 1T - sire of Lot 44



COMMON SENSE - sire of Lot 45



BOLD EDITION - sire of Lots 50 and 51



RED MOOSE CREEK 51J - sire of Lot 49



REGAL 909G - Sire of Lot 43



CROWN ROYAL - future sire

*Commercial
Open Heifers*

LOT 56



12 F1 HEREFORD/ANGUS born April
STANDARD HILL LIVESTOCK

LOT 57



6 HEREFORD/ANGUS/SIMM born Feb
TYSON MORIN - TRADEMARK RANCHING

LOT 58



5 HEREFORD/RED ANGUS born April
GANZER RANCH

LOT 59



6 RED ANGUS HEIFERS born Feb/Mar
EYE HILL STOCK FARM

LOT 60



5 RED ANGUS HEIFERS born February
COLLINGS LAND & CATTLE

LOT 61



8 BLACK ANGUS HEIFERS born Apr/May
MIKE & JAYDEE ANDRUIK

Terms and Conditions

Terms: All sales are in Canadian Funds, payable by cash or cheque on sale day, unless other arrangements have been made prior to the sale with consignors. Every animal sells to the highest bidder, and in cases of disputes the auctioneer will make the decision to reopen the bidding. The auctioneer's decision will be final. Each animal becomes the responsibility of the purchaser as soon as sold.

Announcements: Any announcements from the stand take precedence over print material.

Guarantee: All animals are backed by the respective breed associations Breeder Guarantee. All bulls will be semen tested before the sale, weather permitting. A list of semen evaluation results will be available at the sale or by calling the consignors before the sale. Bulls will be semen tested prior to the sale, however may sell deferred. Deferred bulls will be semen tested satisfactory prior to delivery. If a satisfactory semen test is not produced the purchaser will be refunded. The sellers have replacement bulls available. Hereford bulls sold to purebred breeders will be parentage and genetic defect tested by the seller prior to delivery. Angus bulls sold to purebred breeders will be parentage verified by the seller prior to delivery. Any other parentage or defect testing may be requested by the purchaser, however cost may be the responsibility of the purchaser. All genetic testing results will be shared with the purchaser.

Delivery: Free delivery within 500 km or to central locations in Saskatchewan and Alberta with consideration of volume and value of purchases. Deliveries will commence in April.

Feeding/Wintering Program: Purchases can be sent back to their home pens and remain under consignor's management until April 15th free of charge. We strongly recommend you insure your purchases for liability reasons.

Insurance: The sellers encourage the purchasers to insure animals that remain at the seller's ranch due to liability. We can suggest an insurance agent to fulfill your needs, but there will not be an affiliated insurance provider at the sale.

Sight Unseen Purchases: Call the consignors to discuss what type of animal you require and your purchase price in mind. Sellers will do their best to fill your orders. Sellers encourage buyers to utilize the sales staff as well as picture and video to aid in selection.

All persons who attend the sale do so at their own risk.

Thank You!

*for attending the sale and
for showing interest in our programs*

Return Undeliverable to:

Standard Hill Livestock
PO Box 227
Maidstone, SK
S0M 1M0



1 pm MST MAIDSTONE, SK

D|L|M|S
www.dlms.ca



www.shlivestock.com

