



Selling Yearling and Two-Year Old Bulls, Open Purebred and Commercial Heifers

Standard Hill

CONNECTION

RED ANGUS, BLACK ANGUS, POLLED HEREFORD BULL & FEMALE SALE

Friday, March 13, 2020 2 pm MST

NORTH OF MAIDSTONE, SK



www.shlivestock.com

100 HEAD SELL

- 13 Black Angus Two-Year Old Bulls
- 15 Black Angus Yearling Bulls
- 11 Polled Hereford Two-Year Old Bulls
- 7 Polled Hereford Yearling Bulls
- 12 Red Angus Yearling Bulls
- 6 Black Angus Yearling Heifers
- 6 Polled Hereford Yearling Heifers
- 30 Commercial Open Heifers

Friday, March 13, 2020

2 PM MST (Alberta time) at Standard Hill Livestock
North of Maidstone, SK

Staff/Sale Day Phones

- Stephen Myer, Standard Hill Livestock
306-893-8414
- Brennan Schachtel, Eye Hill Stock Farm
306-821-2504
- Shane Castle, Castlerock Marketing
306-741-7485
- Ryan Hurlburt Auctioneer 306-292-9812
- Travis Bygrove Ringman 780-205-6008
- Jim Pulyk Ringman 780-787-0646
- Jessy Milne-Smith, LiveAuctions.tv
613-229-1073 customer service 817-725-8595

LiveAuctions.TV

Register to bid online at www.LiveAuctions.tv
You must pre-register to be able to participate.

View lot information and videos online at

www.shlivestock.com

* Volume Discount - 3% on 3 individual lots

* Junior Discount - 5% on heifers to those under 21

Join us for complimentary lunch
starting at 12:00 on sale day.

Presented By



Stephen & Christine Myer & Family
Box 227 Maidstone, SK S0M 1M0
Ph) 306-893-2298 C) 306-893-8414
standard.hill@live.ca shlivestock.com
Black Angus and Polled Herefords



Brennan & Taryn Schachtel & Family
Box 421 Marshall, SK S0M 1R0
Ph) 306-821-2504 eyehillb@gmail.com
Red Angus

SALE CONSULTANT

Castlerock Marketing

Shane & Tammy Castle 306-741-7485

Devin Warrilow 780-581-4329

castlerock.mktg@sasktel.net

www.castlerockmarketing.com





Welcome from Standard Hill

Greetings fellow cattle producers. We are proud to produce this sale as a display of our hard work and commitment to the beef industry. With our guests, Eye Hill Stock Farm, we are offering a quality set of bulls of three different breeds; with two different ages to meet your cow service needs, and a select group of purebred and commercial open heifers; to help you replenish or grow your herd of momma cows. We are in the British breeds to produce the maternal traits and longevity they offer.

At Standard Hill we pride ourselves on culling hard for longevity and productivity. We select and breed our cattle for completeness, not following the trends, but sticking to the fundamentals. We believe the offering for this year's sale exemplifies the high fertility, eye appeal, and maternal traits that we strive for. The resulting stock from our program must go out and work hard for us and our buyers. We value our reputation as honest, trustworthy, and easy to deal with. We would like to thank everyone who has done business with us in the past, and welcome everyone to join us for the sale on Friday, March 13th, 2020.

Please feel free to contact us if you have any questions.

Stephen & Christine Myer



Stephen, Jayce, Landen, Karli, and Christine



Thank you to the organizing committee and all who attended the NW Hereford Tour!



REF **Sire**



STANDARD HILL LIVESTOCK

BLACK ANGUS

BELVIN DISPUTE 6125

Purchased in the spring of 2017, Dispute impresses with his presence, length of body, depth of rib, and eye appeal. We have used him successfully on heifers and cows. After data submitted from 42 progeny 6125 is in the top 6% of the breed for WW. His first daughters calved in 2020 are doing great. Dispute is sired by HF Junction 18B, who produced a multitude of strong sellers for Belvin, and his Ring Creek dam is easy to look at and has been a consistent producer. Owned with MG Angus.



YEARLING



DAM

REF **Sire**



STANDARD HILL LIVESTOCK

BLACK ANGUS

SCC BANDO 45A

Bando 45A was purchased from Stewart Cattle Company in Manitoba following a successful show career. He is now deceased but left us with an exceptional group of females. He is the maternal grand sire to six of this year's sale lots and sire of two two year old sale bulls. 45A added dimension, and extraordinary length, to his calves. After using him naturally and by AI we have 78 progeny analyzed, 22 daughters in production, and is in the top 30% of the breed for BW, 35% for WW, and 2% for SC.



SON



DAUGHTER

REF **Sire**



STANDARD HILL LIVESTOCK

BLACK ANGUS

STANDARD HILL MAJOR 350C

Major was a standout early on and we knew right away we wanted him working at home. He has developed into a 2200 lbs tank. We have used him successfully on heifers and cows. Major's progeny exhibit strenght in length of body, base width, depth of rib, fertility, muscling, and a good foot. After 50 progeny analyzed he is in the top 15% of the breed for BW, and top 1% for milk with 11 daughters in production. His dam, a LLB Tradition daughter, has a level udder with small teats. We hope for a large group of Major daughters producing for many years in the future.



LONG YEARLING



DAM

REF Sire



STANDARD HILL BENGAL 479A

An own son of HF Tiger 5T, Bengal 479A was shown successfully as a calf and then we sold walking rights to K-Cow Ranch. After we used him some by AI, yielding some of our top heifer calves and sale bulls, we were able to buy walking rights back. We now have eleven daughters in production, and we hope many more on the way. He is a quiet disposition bull with lots of muscle and a great foot. He has 109 progeny analyzed and is in the top 10% of the breed for BW. Mature weight is 2800 lbs.



STANDARD HILL LIVESTOCK

BLACK ANGUS

REF Sire LAZY E FORTITUDE 6004D



Purchased from Lazy E Bar Angus at Bashaw, AB as a two year old for his eye appeal and soundness. 6004D has passed on a ton of growth to his calves. He possesses a great foot and length of spine. He is the sire of lots 21 and 28 in this year's sale.

STANDARD HILL LIVESTOCK

BLACK ANGUS

FUTURE Sire DFCC 244B FLO RIDER 22F



Our selection for the 2019 Double F bull sale, Flo Rider is a representation of his sire's name, Complete. We admire his eye appeal standing still and on the move. We used him successfully on heifers and a select group of moderate cows last year, and he held his condition well.

STANDARD HILL LIVESTOCK

BLACK ANGUS

LOT 1



STANDARD HILL DISPUTE 329F

SHL 329F 2024132 DOB: Jan 28/18

- | | |
|----------------------------|-----------------------------|
| HF JUNCTION 18B | YOUNG DALE YOHANN 39Y |
| BELVIN DISPUTE 6125 | HF ELSIEMERE 106W |
| BARBARA OF RING CREEK 65Y | RING CREEK BARDOLENE 69W |
| | BARBARA OF RING CREEK 31W |
| SCC BANDO 45A | LLB 184S BANO 502X |
| STANDARD HILL ROXY 354C | SCC PRIDE 31X |
| STANDARD HILL BLACKBIRD 6Y | S A V FINAL ANSWER 0035 |
| | STANDARD HILL BLACKBIRD 78W |

329F is a moderate framed, large ribbed, smooth fronted bull that should work excellent on heifers according to his pedigree and numbers. He is in the top 1% for BW EPD. He has well above average testicle development. Our first Dispute daughters are calving this year and we are very happy with their udders and docility.

TWO-YEAR OLD BLACK ANGUS BULL

EPDS BW -2.1 WW 44 YW 59 MILK 16 TM 38 CE 3.5

adj adj
bw: 64 ww: 600 yw: 1014 Dec 19/19
1480



STANDARD HILL BANDO 315F

SHL 315F 2024127 DOB: Jan 23/18

LLB 184S BANDO 502X	LLB 2166 BANDO 184S
SCC BANDO 45A	LLB BLACKBIRD 315N
SCC PRIDE 31X	SCC RETAIL PRODUCT 44T
	SCC PRIDE 24T
RNRF ERIC 220A	ANGUS ACRES ERIC 78U
STANDARD HILL ANN 313D	RNRF ELNORA 220S
STANDARD HILL LADY ANN 23U	K C F BENNETT TOTAL
	STANDARD HILL LADY ANN 21G

315F is a powerful bull that impresses with his length of body, muscle and overall capacity. He was one of the heaviest coming two year old bulls in the pen at last weigh in. He was small at birth and off a moderate framed, beautiful uddered cow. This will be the final year we will sell naturally sired Bando 45A progeny. He left us with a great group of females.

TWO-YEAR OLD BLACK ANGUS BULL

EPDS BW 0.2 WW 32 YW 50 MILK 11 TM 27 CE 6.0

adj
bw: 70 ww: 590 yw: 1045 Dec 19/19
1670



STANDARD HILL DISPUTE 352F

SHL 352F 2024174 DOB: Apr 7/18

HF JUNCTION 18B	YOUNG DALE YOHANN 39Y
BELVIN DISPUTE 612S	HF ELSIEMERE 106W
BARBARA OF RING CREEK 65Y	RING CREEK BARDOLENE 69W
	BARBARA OF RING CREEK 31W
S A V FINAL ANSWER 0035	SITZ TRAVELER 8180
STANDARD HILL PRIDE 364C	S A V EMULOUS 8145
STANDARD HILL PRIDE 329A	STANDARD HILL YAHOO 68Y
	STANDARD HILL PRIDE 27W



This guy checks a lot of boxes. Moderate birth weight, muscular, smooth and attractive, lots of testicle, strong maternal background, skeletally extended, wide topped, and deep bodied. A complete package that has been at the top of his group all along.

TWO-YEAR OLD BLACK ANGUS BULL

EPDS BW 0.0 WW 58 YW 89 MILK 20 TM 49 CE 6.0

adj
bw: 77 ww: 721 yw: 1017 Dec 19/19
1640



STANDARD HILL MAJOR 381F

SHL 381F 2024169 DOB: Mar 15/18

GVC SETTLER 004X	S A V PIONEER 7301
STANDARD HILL MAJOR 350C	G V C FRONTIER LADY 272M
STANDARD HILL LADY ANN 117X	LLB 557S TRADITION 181U
	STANDARD HILL LADY ANN 41R
S A V FINAL ANSWER 0035	SITZ TRAVELER 8180
STANDARD HILL BEBE 365A	S A V EMULOUS 8145
STANDARD HILL BLACKBIRD 55Y	STANDARD HILL WISEMAN 41W
	STANDARD HILL BLACKBIRD 44R



Moderate framed, muscular, and deep ribbed. Likely the bull closest patterned bull to his sire, Major 350C, in the offering this year. His dam is another quality Final Answer daughter with a good udder and weighing 1400 lbs.

TWO-YEAR OLD BLACK ANGUS BULL

EPDS BW 0.1 WW 47 YW 77 MILK 29 TM 53 CE 4.0

adj
bw: 82 ww: 719 yw: 950 Dec 19/19
1540



TWO-YEAR OLD BLACK ANGUS BULL

EPDS BW -- WW -- YW -- MILK -- TM -- CE --

STANDARD HILL 353F

SHL 353F not registered DOB: Mar 11/18

GVC SETTLER 004X
STANDARD HILL MAJOR 350C
STANDARD HILL LADY ANN 117X

S A V PIONEER 7301
G V C FRONTIER LADY 272M
LLB 557S TRADITION 181U
STANDARD HILL LADY ANN 41R

black angus
SHL 388D
STANDARD HILL ANN 492B

black angus
EARLY SUNSET FREEDOM 89U
STANDARD HILL LADY ANN 19S

SELLS WITHOUT PAPERS

353F is a complete type with muscle, capacity, and eye appeal. His dam is a moderate framed, sweet uddered, highly productive female.

adj adj
bw: 85 ww: 667 yw: 1009 Dec 19/19
1550



TWO-YEAR OLD BLACK ANGUS BULL

EPDS BW 1.7 WW 50 YW 90 MILK 31 TM 56 CE 2.0

STANDARD HILL MAJOR 386F

SHL 386F 2024173 DOB: Apr 3/18

GVC SETTLER 004X
STANDARD HILL MAJOR 350C
STANDARD HILL LADY ANN 117X

S A V PIONEER 7301
G V C FRONTIER LADY 272M
LLB 557S TRADITION 181U
STANDARD HILL LADY ANN 41R

B P F SECIAL FOCUS 504
STANDARD HILL ELBA 380C
STANDARD HILL ELBA 360A

MYTTY IN FOCUS
B P F BLACK CASH 341
S A V FINAL ANSWER 0035
STANDARD HILL ELBA 33Y



Smooth made, attractive Major son off a consistent producing young Special Focus cow. 386F boasts the highest adjusted WW of the two year old bulls on offer. We have a full sib heifer in our yearling pen that is a standout.

adj adj
bw: 93 ww: 755 yw: 1013 Dec 19/19
1595



TWO-YEAR OLD BLACK ANGUS BULL

EPDS BW 2.8 WW 37 YW 54 MILK 21 TM 40 CE 0.0

STANDARD HILL BANDO 392F

SHL 392F 2024154 DOB: Feb 8/18

LLB 184S BANDO 502X
SCC BANDO 45A
SCC PRIDE 31X

LLB 2166 BANDO 184S
LLB BLACKBIRD 315N
SCC RETAIL PRODUCT 44T
SCC PRIDE 24T

GVC SETTLER 004X
STANDARD HILL RAVEN 492C
STANDARD HILL BLACKBIRD 54S

S A V PIONEER 7301
G V C FRONTIER LADY 272M
BASIN RAINMAKER 814Z
STANDARD HILL BLACKBIRD 42N

392F is the second and final Bando 45A son to sell. He is long bodied, smooth, and has large testicles. Best suited for cows. He should be a good female maker. He has always been a bit up headed which makes him attractive but not one you want to hop in a small pen with, although he's my best friend when I have his breakfast.

adj adj
bw: 95 ww: 669 yw: 1042 Dec 19/19
1615

STANDARD HILL DISPUTE 366F



SHL 366F 2024187

DOB: Apr 21/18

HF JUNCTION 18B
BELVIN DISPUTE 6125
BARBARA OF RING CREEK 65Y

YOUNG DALE YOHANN 39Y
HF ELSIEMERE 106W
RING CREEK BARDOLENE 69W
BARBARA OF RING CREEK 31W

HF TIGER 5T
STANDARD HILL ANN 333A
STANDARD HILL LADY ANN 60W

HF KODIAK 8R
HF ECHO 84R
HYLINE RIGHT TIME 338
STANDARD HILL BLACKBIRD 42N

366F is a smooth fronted, long bodied, deep ribbed bull that boasts some of the highest growth epds of the two year old group. He is in the top 7% for WW, 15% for YW, in the breed. His dam is a larger framed Tiger 5T daughter that is close to a ton when she comes off pasture in the fall.

bw: 88 adj ww: 724 adj yw: 1030 Dec 19/19
1610

TWO-YEAR OLD BLACK ANGUS BULL

EPDS BW 2.9 WW 63 YW 101 MILK 25 TM 57 CE 2.0

STANDARD HILL DISPUTE 301F



SHL 301F 2042484

DOB: Feb 16/18

HF JUNCTION 18B
BELVIN DISPUTE 6125
BARBARA OF RING CREEK 65Y

YOUNG DALE YOHANN 39Y
HF ELSIEMERE 106W
RING CREEK BARDOLENE 69W
BARBARA OF RING CREEK 31W

EARLY SUNSET FREEDOM 89U
STANDARD HILL RAVEN 310C
STANDARD HILL BLACKBIRD 10U

PSF FREEDOM 12S
ROSE HILL MISS DAWN 31Z
K C F BENNETT TOTAL
STANDARD HILL BLACKBIRD 77S

301F is a smooth made bull that should work on heifers. His young Freedom 89U dam is just getting rolling here with two studs in this year's sale, see lot 14 the leadoff yearling bull, and another one that was our first calf on the ground in 2020.

bw: 81 adj ww: 639 adj yw: 1000 Dec 19/19
1555

TWO-YEAR OLD BLACK ANGUS BULL

EPDS BW 1.2 WW 33 YW 43 MILK 23 TM 40 CE 3.0

STANDARD HILL DISPUTE 305F



SHL 305F 204149

DOB: Feb 5/18

HF JUNCTION 18B
BELVIN DISPUTE 6125
BARBARA OF RING CREEK 65Y

YOUNG DALE YOHANN 39Y
HF ELSIEMERE 106W
RING CREEK BARDOLENE 69W
BARBARA OF RING CREEK 31W

EARLY SUNSET FREEDOM 89U
STANDARD HILL ANN 323C
STANDARD HILL LADY ANN 86U

PSF FREEDOM 12S
ROSE HILL MISS DAWN 31Z
STANDARD HILL ROMEO 49R
STANDARD HILL LADY ANN 15M

305F is a complete type of bull. He is smooth made, long and wide bodied, and muscular. He was the heaviest two year old at last weigh in. His mother, as all 89U daughters, possesses a very correct, small teated udder.

bw: 88 adj ww: 656 adj yw: 1153 Dec 19/19
1715

TWO-YEAR OLD BLACK ANGUS BULL

EPDS BW 3.0 WW 43 YW 67 MILK 21 TM 43 CE -2.0

STANDARD HILL BENGAL 508F

SHL 508F 204188 DOB: Apr 22/18

HF TIGER 5T
STANDARD HILL BENGAL 479A
STANDARD HILL LADY ANN 23P

HF KODIAK 5R
HF ECHO 84R
R R 9440 SCOTCH CAP 1483
STANDARD HILL LADY 44G

K C F BENNETT TOTAL
STANDARD HILL LADY ANN 73W
STANDARD HILL LADY ANN 19S

SITZ ALLIANCE 6595
EXT OF CONANGA 6790
BASIN RAINMAKER 814Z
STANDARD HILL LADY ANN 45M

508F is attractively made and good haired. He has a presence about him for sure. He seems a little timid until he gets used to you, but we have never had any problems working with him. His dam is getting to her pension and still getting it done.

adj adj
bw: 91 ww: 652 yw: 984 Dec 19/19
1515



TWO-YEAR OLD BLACK ANGUS BULL

EPDS BW 1.4 WW 35 YW 72 MILK 23 TM 41 CE 3.0

STANDARD HILL MAJOR 357F

SHL 357F 204182 DOB: Apr 4/18

GVC SETTLER 004X
STANDARD HILL MAJOR 350C
STANDARD HILL LADY ANN 117X

S A V PIONEER 7301
G V C FRONTIER LADY 272M
LLB 557S TRADITION 181U
STANDARD HILL LADY ANN 41R

EARLY SUNSET FREEDOM 89U
STANDARD HILL ANN 322A
STANDARD HILL LADY ANN 83U

PSF FREEDOM 12S
ROSE HILL MISS DAWN 31Z
GBT DESIGN 878 41P
STANDARD HILL LADY ANN 57P

357F is another Major sired brick, smooth bodied, good headed, long spined, muscular, and deep ribbed. His moderate framed dam is 1500 lbs of eye appeal.

adj adj
bw: 96 ww: 671 yw: 897 Dec 19/19
1510



TWO-YEAR OLD BLACK ANGUS BULL

EPDS BW 2.6 WW 35 YW 65 MILK 29 TM 47 CE -4.0

STANDARD HILL BENGAL 327F

SHL 327F 204185 DOB: Apr 17/18

HF TIGER 5T
STANDARD HILL BENGAL 479A
STANDARD HILL LADY ANN 23P

HF KODIAK 5R
HF ECHO 84R
R R 9440 SCOTCH CAP 1483
STANDARD HILL LADY 44G

S A V FINAL ANSWER 0035
STANDARD HILL BLACKBIRD 9W
STANDARD HILL BLACKBIRD 79T

SITZ TRAVELER 8180
S A V EMULOUS 8145
GBT DESIGN 878 41P
STANDARD HILL BLACKBIRD 9N

327F is a calving ease bull with a lot of stretch and hair. His Final Answer dam has raised us some top notch progeny over her lifespan with every bull being sold and every female working for us with exception of one sold through to sale that is still working elsewhere.

adj adj
bw: 81 ww: 682 yw: 924 Dec 19/19
1370



TWO-YEAR OLD BLACK ANGUS BULL

EPDS BW -0.5 WW 37 YW 63 MILK 22 TM 41 CE 8.0

LOT 14



STANDARD HILL AMBUSH 301G

SHL 301G 2093764 DOB: Jan 25/19

HF TIGER 5T
STANDARD HILL BENGAL 479A
STANDARD HILL LADY ANN 23P

HF KODIAK 5R
HF ECHO 84R
R R 9440 SCOTCH CAP 1483
STANDARD HILL LADY 44G

EARLY SUNSET FREEDOM 89U
STANDARD HILL RAVEN 310C
STANDARD HILL BLACKBIRD 10U

PSF FREEDOM 12S
ROSE HILL MISS DAWN 31Z
K C F BENNETT TOTAL
STANDARD HILL BLACKBIRD 77S



89U

Ambush 301 is a soft made calf with lots of hair. He is expansive in his muscling and dimension for his moderate frame size. I would use him on heifers and sleep easy. He's got herd bull written all over him.

YEARLING BLACK ANGUS BULL

EPDS BW -0.4 WW 35 YW 63 MILK 25 TM 43 CE 7.0

adj bw: 80 ww: 781 yw: 1093 Jan 26/20
1095

LOT 15



STANDARD HILL MAJOR 323G

SHL 323G 2093782 DOB: Feb 5/19

GVC SETTLER 004X
STANDARD HILL MAJOR 350C
STANDARD HILL LADY ANN 117X

S A V PIONEER 7301
G V C FRONTIER LADY 272M
LLB 557S TRADITION 181U
STANDARD HILL LADY ANN 41R

SCC BANDO 45A
STANDARD HILL QUEENY 351E
STANDARD HILL QUEEN MOTHER 2Y

LLB 184S BANDO 502X
SCC PRIDE 31X
S A V FINAL ANSWER 0035
STANDARD HILL QUEEN MOTHER 31W



351F

I'd say his dam did pretty fair for her first kick at raising a calf, our heifers have to compete with the cows as soon as they are turned out to pasture for breeding. A full brother to his dam was the leadoff bull in last years sale, picture inset.

YEARLING BLACK ANGUS BULL

EPDS BW 0.7 WW 52 YW 87 MILK 26 TM 52 CE 4.0

adj bw: 73 ww: 768 yw: 1143 Jan 26/20
1115

LOT 16



STANDARD HILL CLASH 361G

SHL 361G 2093750 DOB: Feb 2/19

HF JUNCTION 18B
BELVIN DISPUTE 612S
BARBARA OF RING CREEK 65Y

YOUNG DALE YOHANN 39Y
HF ELSIEMERE 106W
RING CREEK BARDOLENE 69W
BARBARA OF RING CREEK 31W

STANDARD HILL YAHOO 68Y
STANDARD HILL BEBE 327A
STANDARD HILL BLACKBIRD 9W

HF TIGER 5T
STANDARD HILL LASSIE 39U
S A V FINAL ANSWER 0035
STANDARD HILL BLACKBIRD 79T



DAM

Clash and his twin Smash have been standouts all along. Clash is a performance type bull that has maintained his crown as the heavyweight over the rest of the yearlings. We are retaining his twin. Maternal sibs were leadoff bulls in our 2017 & 2018 sales.

YEARLING BLACK ANGUS BULL

EPDS BW 2.8 WW 59 YW 87 MILK 23 TM 52 CE 0.0

adj bw: 83 ww: 802 yw: 1181 Jan 26/20
1165

LOT 17



STANDARD HILL MAJOR 397G

SHL 397G 2093772 DOB: Feb 23/19

GVC SETTLER 004X
STANDARD HILL MAJOR 350C
STANDARD HILL LADY ANN 117X

S A V PIONEER 7301
G V C FRONTIER LADY 272M
LLB 557S TRADITION 181U
STANDARD HILL LADY ANN 41R

SCC BANDO 45A
STANDARD HILL ROXY 845C
STANDARD HILL BLACKBIRD 6Y

LLB 184S BANDO 502X
SCC PRIDE 31X
S A V FINAL ANSWER 0035
STANDARD HILL BLACKBIRD 78W

Major 397G has a definite herd bull presence about him. He is extremely long bodied, has above average testicle development, exhibits a lot of capacity, and has good muscling. He is one I definitely hope to see as a mature bull. His dam is a quality, moderate framed Bando daughter with extremely good mothering skills and a tidy, highly functional udder.

adj adj
bw: 95 ww: 816 yw: 1242 Jan 26/20
1165

YEARLING BLACK ANGUS BULL

EPDS BW 1.9 WW 48 YW 83 MILK 22 TM 46 CE 3.5

LOT 18



STANDARD HILL MAJOR 393G

SHL 393G 2093771 DOB: Feb 1/19

GVC SETTLER 004X
STANDARD HILL MAJOR 350C
STANDARD HILL LADY ANN 117X

S A V PIONEER 7301
G V C FRONTIER LADY 272M
LLB 557S TRADITION 181U
STANDARD HILL LADY ANN 41R

SCC BANDO 45A
STANDARD HILL ANN 497C
STANDARD HILL LADY ANN 12Y

LLB 184S BANDO 502X
SCC PRIDE 31X
S A V FINAL ANSWER 0035
STANDARD HILL LADY ANN 28W

Major 393G is a 3/4 brother to lot 17. This guy kind of flew under the radar a bit until he hit feed, but he has since caught up admirably to the top end bulls in the pen. His dam is larger framed than our average, weighing in at 1770 last fall.

adj adj
bw: 89 ww: 669 yw: 1159 Jan 26/20
1140

YEARLING BLACK ANGUS BULL

EPDS BW 2.1 WW 46 YW 81 MILK 24 TM 46 CE 0.0

LOT 19



STANDARD HILL MAJOR 367G

SHL 367G 2093747 DOB: Feb 13/19

GVC SETTLER 004X
STANDARD HILL MAJOR 350C
STANDARD HILL LADY ANN 117X

S A V PIONEER 7301
G V C FRONTIER LADY 272M
LLB 557S TRADITION 181U
STANDARD HILL LADY ANN 41R

HF TIGER 5T
STANDARD HILL LADY ANN 79Y
STANDARD HILL LADY ANN 28U

HF KODIAK 5R
HF ECHO 84R
SCA 3299 OF IDEAL 1418
STANDARD HILL LADY ANN 35N

The Major sons have a dominant presence in this year's yearling pen. 367G is no exception. He is a large ribbed, smooth made cow bull. His dam is a picturesque Tiger 5T daughter that has achieved elite status within the breed.

adj adj
bw: 103 ww: 780 yw: 1192 Jan 26/20
1145

YEARLING BLACK ANGUS BULL

EPDS BW 3.1 WW 51 YW 95 MILK 31 TM 57 CE -2.0

LOT 20



STANDARD HILL STEALTHY 391G

SHL 391G 2093770 DOB: Jan 28/19
 HF TIGER 5T HF KODIAK 5R
 STANDARD HILL BENGAL 479A HF ECHO 84R
 STANDARD HILL LADY ANN 23P R R 9440 SCOTCH CAP 1483
 STANDARD HILL LADY ANN 44G
 EARLY SUNSET FREEDOM 89U PSF FREEDOM 12S
 STANDARD HILL ANN 490C ROSE HILL MISS DAWN 31Z
 STANDARD HILL LADY ANN 6S K G POWER DESIGN
 STANDARD HILL LADY ANN 23P



MATERNAL SIBLING

This soggy made Bengal son screams calving ease. I would recommend him on heifers, and I think he has a lot of upside growth, levelness, and capacity of muscle and guts to go with it. Karli's first 4-H heifer is a maternal sib, she is a gem.

YEARLING BLACK ANGUS BULL

EPDS BW -3.0 WW 32 YW 62 MILK 23 TM 39 CE 12.0 **1105**

LOT 21



STANDARD HILL FORTRESS 325G

SHL 325G 2115551 DOB: Feb 9/19
 PA FORTITUDE 2500 GAR-EGL PROTEGE
 LAZY E FORTITUDE 6004D G G CLARA 0171
 LAZY E BLACKBIRD 694B LAZY E BARDOLENE 14T
 SPARKLING BLACKBIRD 312X
 S A V FINAL ANSWER 0035 SITZ TRAVELER 8180
 STANDARD HILL PRIDE 3W S A V EMULOUS 8145
 STANDARD HILL PRIDE 36T SCA 3299 OF IDEAL 1418
 STANDARD HILL PRIDE 46G



DAM

The first progeny off our 6004D herdsire sells this year. 325G is more like his Final Answer dam than his sire. He is deep ribbed and was small at birth. He could be an option for heifers but I may be cautious because our other 6004 calves were larger.

YEARLING BLACK ANGUS BULL

EPDS BW -0.6 WW 39 YW 71 MILK 18 TM 38 CE 7.0 **1095**

LOT 22



STANDARD HILL PANTHER 351G

SHL 351G 2093742 DOB: Feb 14/19
 HF TIGER 5T HF KODIAK 5R
 STANDARD HILL BENGAL 479A HF ECHO 84R
 STANDARD HILL LADY ANN 23P R R 9440 SCOTCH CAP 1483
 STANDARD HILL LADY ANN 44G
 S A V FINAL ANSWER 0035 SITZ TRAVELER 8180
 STANDARD HILL QUEEN MOTHER 2Y S A V EMULOUS 8145
 STANDARD HILL QUEEN MOTHER 31W SINCLAIR RITO LEGACY 3R9
 STANDARD HILL QUEEN MOTHER 33J



DAM

Panther 351G is a more moderate version of his Bengal brothers. He has a little less frame, but still the hair and body dimension, with a little less front end. He should work well on heifers. His dam raised the lead off bull in last years sale.

YEARLING BLACK ANGUS BULL

EPDS BW -2.1 WW 29 YW 54 MILK 23 TM 38 CE 12.0 **1025**

LOT 23



STANDARD HILL MAJOR 305G

SHL 305G 2093780 DOB: Feb 5/19

GVC SETTLER 004X
STANDARD HILL MAJOR 350C
STANDARD HILL LADY ANN 117X

S A V PIONEER 7301
G V C FRONTIER LADY 272M
LLB 557S TRADITION 181U
STANDARD HILL LADY ANN 41R

MINBURN QUANTUM 55Y
STANDARD HILL PRIDE 309E
STANDARD HILL PRIDE 338B

TK QUANTUM PHYSICAL 61P
MINBURN MAY 198T
NICHOLS QUIET LAD T9
STANDARD HILL PRIDE 15X

305G is a complete type of bull off a first calver that did an excellent job. He boasts one of, if not the best foot in the yearling pen. I don't put many great grand dam pictures in the book but 15X shows you some of the cow power in this pedigree.

bw: 83 adj ww: 674 adj yw: 1075 Jan 26/20
1045

YEARLING BLACK ANGUS BULL

EPDS BW 2.0 WW 42 YW 74 MILK 28 TM 49 CE -5.0

LOT 24



STANDARD HILL DISPUTE 331G

SHL 331G 2093774 DOB: Feb 12/19

HF JUNCTION 18B
BELVIN DISPUTE 6125
BARBARA OF RING CREEK 65Y

YOUNG DALE YOHANN 39Y
HF ELSIEMERE 106W
RING CREEK BARDOLENE 69W
BARBARA OF RING CREEK 31W

MOHNEN PULSE 533
STANDARD HILL ROXY 346D
STANDARD HILL BEBE 352B

MOHNEN HEARTRATE 1751
MOHNEN JILT 2360
MINBURN QUANTUM 55Y
STANDARD HILL BLACKBIRD 3Y

Stocky made Dispute calf with high growth potential. He is best suited for cows. His dam is an awesome Pulse 533 daughter that is a maternal sibling to our high selling heifer calf in 2018.

bw: 93 adj ww: 815 adj yw: 1011 Jan 26/20
985

YEARLING BLACK ANGUS BULL

EPDS BW 1.1 WW 61 YW 95 MILK 23 TM 54 CE 3.0

LOT 25



STANDARD HILL MAJOR 377G

SHL 377G 2093778 DOB: Feb 8/19

GVC SETTLER 004X
STANDARD HILL MAJOR 350C
STANDARD HILL LADY ANN 117X

S A V PIONEER 7301
G V C FRONTIER LADY 272M
LLB 557S TRADITION 181U
STANDARD HILL LADY ANN 41R

MINBURN QUANTUM 55Y
STANDARD HILL ROXY 491D
STANDARD HILL BLACKBIRD 16S

TK QUANTUM PHYSICAL 61P
MINBURN MAY 198T
BASIN RAINMAKER 814Z
STANDARD HILL BLACKBIRD 63P

Calving ease bull off a young Quantum 55Y daughter. I have always liked this cow family for its eye appeal and docility. Both sides of this pedigree offer a lot of milk. 377G is attractive in his front end and has level lines and adequate muscling.

bw: 82 adj ww: 746 adj yw: 1091 Jan 26/20
1060

YEARLING BLACK ANGUS BULL

EPDS BW -0.1 WW 42 YW 68 MILK 30 TM 51 CE 3.0

LOT 26



STANDARD HILL MAJOR 306G

SHL 306G 2093773 DOB: Feb 16/19

GVC SETTLER 004X	S A V PIONEER 7301
STANDARD HILL MAJOR 350C	G V C FRONTIER LADY 272M
STANDARD HILL LADY ANN 117X	LLB 557S TRADITION 181U
	STANDARD HILL LADY ANN 41R

SCC BANDO 45A	LLB 184S BANDO 502X
STANDARD HILL ROXY 227D	SCC PRIDE 31X
STANDARD HILL BLACKBIRD 9W	S A V FINAL ANSWER 0035
	STANDARD HILL BLACKBIRD 79T

Another Major/Bando combination that has calving ease and eye appeal. Major 306G is extraordinarily clean made and level in his lines. He has the typical hooded Major head, and of course his Bando momma has a udder that will last.

bw: 84 adj ww: 709 adj yw: 1085 Jan 26/20
1030

YEARLING BLACK ANGUS BULL

EPDS BW 0.8 WW 44 YW 75 MILK 25 TM 47 CE 3.0

LOT 27



STANDARD HILL BENGAL 315G

SHL 315G 2115208 DOB: Jan 29/19

HF TIGER 5T	HF KODIAK 5R
STANDARD HILL BENGAL 479A	HF ECHO 84R
STANDARD HILL LADY ANN 23P	R R 9440 SCOTCH CAP 1483
	STANDARD HILL LADY ANN 44G

RNRF ERIC 220A	ANGUS ACRES ERIC 78U
STANDARD HILL ANN 313D	RNRF ELNORA 220S
STANDARD HILL LADY ANN 23U	K C F BENNETT TOTAL
	STANDARD HILL LADY ANN 21G

A Bengal sired heifer bull off a good uddered cow. He is likely a little slower maturing like his brother, Lot 2, who has turned into a definite herdsire prospect.

bw: 81 adj ww: 631 adj yw: 957 Jan 26/20
950

YEARLING BLACK ANGUS BULL

EPDS BW 0.4 WW 26 YW 49 MILK 17 TM 30 CE 4.0

LOT 28



STANDARD HILL FORTRESS 497G

SHL 497G 2093728 DOB: Feb 16/19

PA FORTITUDE 2500	GAR-EGL PROTEGE
LAZY E FORTITUDE 6004D	G G CLARA 0171
LAZY E BLACKBIRD 694B	LAZY E BARDOLENE 14T
	SPARLING BLACKBIRD 312X

BASIN RAINMAKER 814Z	BASIN RAINMAKER D S 380U
STANDARD HILL BLACKBIRD 54S	BASIN PAMELLA 676X
STANDARD HILL BLACKBIRD 42N	STANDARD HILL TRAVELER 6G
	STANDARD HILL BLACKBIRD 31J

The Fortitude's do seem to have a lot of growth. This is the only bull to sell this year off an 814Z cow. Its been awhile since that happened, these cows have been the pillars of longevity a testimate to their structure, udder quality, and productivity.



bw: 92 adj ww: 771 adj yw: 1056 Jan 26/20
1010

YEARLING BLACK ANGUS BULL

EPDS BW 2.6 WW 37 YW 67 MILK 25 TM 25 CE -5.0

REF **Sire**



CHSF 5Y DEALER 13D

Dealer was purchased by private treaty as a calf from Chestermere Hereford Stock Farms at Didsbury, AB. When we toured the herd we took the largest interest in the Bricker's Brian 5Y herdsire, and thus we bought a son of his. Dealer is long spined, muscular, level in his lines, and clean fronted with a good head. His mother is a moderate framed, well pigmented, Tailor Made daughter with a picture perfect udder. Dealer's work is evident in the depth of this year's two year old pen.



STANDARD HILL LIVESTOCK

POLLED HEREFORD

REF **Sire**



GHC QUIGLEY 20B

Quigley was purchased as a calf from the Crittendens in their herd reduction sale. It was a fun group to sort through because the bull calves and their dams were all together in a pen that made them easy to analyze thoroughly. Quigley is a moderate framed bull with superior levelness, width, eye appeal, and muscling. His mother was impressive with her volume and udder quality. Last year's Connection Sale high seller was a Quigley son. We also utilized him on black cows in our commercial program, yielding some terrific baldy heifers and steers.



STANDARD HILL LIVESTOCK

POLLED HEREFORD

REF **Sire**



MCCOY 53A MAGNET 109E

Magnet 109E was purchased from the McCoy/Beck Bull Sale in 2018. He is a homozygous polled son of their Skyfall 53A herdsire that has bred extremely well and sired a large number of retained females. His dam is a flush cow at MCC and they have also retained a son of hers, McCoy 719T Matrix ET 30E, for their own use. Magnet has been used on our heifers and cows, yielding eye appealing, long bodied, strong topped progeny with generally a lot of pigment. He is the sire of Lots 40 & 42.



STANDARD HILL LIVESTOCK

POLLED HEREFORD

REF **Sire**



MCCOY 8Y MAVERICK 25E

Maverick 25E was the leadoff bull in the McCoy/Beck Bull Sale in 2018. He is a heterozygous polled son of NJW 73S W18 Homegrown 8Y ET, who is a trait epd trait leader for calving ease, milk, and ribeye area among others. His dam is an Equity 70Y daughter that Chad talks very highly of. Maverick has a wide top, a great hip and loads of muscle. We used him successfully on our April calving heifers last year, although his winter born calves possessed a lot of birth weight.



RETAINED SON



DAUGHTER LOT 67

STANDARD HILL LIVESTOCK

POLLED HEREFORD

REF **Sire** STANDARD-HILL UNTAPPED 59D



Untapped is a grand son of TH 89T 743 Untapped 425X ET, who is a past Agribition Grand Champion. His dam is a beautiful uddered, attractively made cow with some Braun Ranch breeding, Wilgor Northeastern, and Square-D Conquer in her pedigree. Sire of Lot 69.

STANDARD HILL LIVESTOCK

POLLED HEREFORD

REF **Sire** STANDARD-HILL MATRIX 49E



DAM

Matrix 49E is an own son of Bare Mr You Tube 4Y who was the high selling bull at Agribition as a yearling. His dam is a powerful Guardian 40X daughter that weans a heavy calf every year. Matrix is dark red, muscular, and attractive made. Sire of heifer Lots 68 and 70.

STANDARD HILL LIVESTOCK

POLLED HEREFORD

LOT **29**



STANDARD-HILL JACK 25F

SHL 25F PC03046329 DOB: Apr 19/18

CHSF 52U BRIAN 5Y
CHSF 5Y DEALER 13D
CHSF 7W ROSE 22A

GHC-TABOO COALITION 52U
DXB 71N KITTIE 44S
HARVIE TAILOR MADE ET 7W
CHSF 54L ROSE ET 8R

FCC 2U HARLAN 7Y
STANDARD-HILL KARISTA 28C
SQUARE-D GINA 193S

FCC 7M QUANTUM 2U
MOOREHAVEN GLENA MARIE 8S 3W
SQUARE-D CONQUER ET 44N
REMITAIL EVENTRESS 193L



193S

Jack 25F is a soggy Dealer son with an attractive structure and colouration. His young Harlan mother gave him a great start and he has kept up with great growth on grass and feed. He boasts some of the best growth stats of the two year old group.

adj adj
bw: 92 ww: 726 yw: 930 Dec 19/19

TWO-YEAR OLD POLLED HEREFORD BULL

EPDS CE -1.5 BW 3.9 WW 59.2 YW 92.9 MILK 17.4 TM 47.0

1600

LOT 30



STANDARD-HILL JACK 85F

SHL 85F PC03046335 DOB: Apr 14/18

CHSF 52U BRIAN 5Y
CHSF 5Y DEALER 13D
CHSF 7W ROSE 22A

GHC-TABOO COALITION 52U
DXB 71N KITTIE 44S
HARVIE TAILOR MADE ET 7W
CHSF 54L ROSE ET 8R

SHPH 7S DOMINATER 70Y
STANDARD-HILL ANNIE 122C
BLAIR-ATHOL 161U ANNIE 66X

SQUARE-D PAT 2N 7S
SHPH 50T RENA 74W
REMITALL HEATER 161U
BLAIR-ATHOL ANN MARGRET 51P

A complete type of bull that should work on heifers. Jack 85F is off of a good milking, young Dominator 70Y cow. The Dealer sons are a fairly consistent group all having his length, eye appeal, and good head.

TWO-YEAR OLD POLLED HEREFORD BULL

EPDS CE 7.7 BW 0.8 WW 52.3 YW 85.6 MILK 14.6 TM 40.8

bw: 79 adj ww: 677 adj yw: 925 Dec 19/19
1570

LOT 31



STANDARD-HILL MATER 23F

SHL 23F PC03046317 DOB: Apr 29/18

CHSF 52U BRIAN 5Y
CHSF 5Y DEALER 13D
CHSF 7W ROSE 22A

GHC-TABOO COALITION 52U
DXB 71N KITTIE 44S
HARVIE TAILOR MADE ET 7W
CHSF 54L ROSE ET 8R

GHC-CT-GARDIAN 40X
STANDARD-HILL 40X IRIS 82A
SHPH 7S IRIS 22Y

MCCOY 47N THROTTLE 98S
GHC MISS LASSIE 14M
SQUARE-D PAT 2N 7S
SHPH 62T IRIS 16W

Mater 23F is a well marked, wide based, high capacity bull that has been a standout since he was a young calf. His 1400 lbs dam has been producing some large bull calves that are consistently at the top of the pen.

TWO-YEAR OLD POLLED HEREFORD BULL

EPDS CE 3.5 BW 1.8 WW 49.6 YW 75.9 MILK 18.4 TM 43.2

bw: 94 adj ww: 684 adj yw: 854 Dec 19/19
1495

LOT 32



STANDARD-HILL ACE 20F

SHL 20F PC03046340 DOB: Feb 10/18

CHSF 52U BRIAN 5Y
CHSF 5Y DEALER 13D
CHSF 7W ROSE 22A

GHC-TABOO COALITION 52U
DXB 71N KITTIE 44S
HARVIE TAILOR MADE ET 7W
CHSF 54L ROSE ET 8R

BARE MR YOU TUBE 4Y
STANDARD-HILL 4Y KARISTA 28D
SQUARE-D GINA 193S

NCX WINCHESTER 745W
NCX MISS WHIPLASH 3W
SQUARE-D CONQUER ET 44N
REMITALL EVENTRESS 193L

Ace 20F is a 3/4 brother to the leadoff two-year old bull, Lot 29. He is very clean in his make-up, and possesses good skeletal extension. We think very highly of his You Tube 4Y sired momma. We have a top tier full sib in our yearling heifer pen.

TWO-YEAR OLD POLLED HEREFORD BULL

EPDS CE 2.5 BW 2.9 WW 55.3 YW 87.6 MILK 18.0 TM 45.7

bw: 91 adj ww: 716 adj yw: 1176 Dec 19/19
1665

LOT 33



STANDARD-HILL KING 60F

SHL 60F PC03046309 DOB: May 4/18

CHSF 52U BRIAN 5Y
CHSF 5Y DEALER 13D
CHSF 7W ROSE 22A

GHC-TABOO COALITION 52U
DXB 71N KITTIE 44S
HARVIE TAILOR MADE ET 7W
CHSF 54L ROSE ET 8R

SHPH 2N BEEFMAN 28U
SHPH 28U FANCY 54Z
SHPH 7S FORTUNE 52W

WILGOR 55K NORTHEASTERN OL 2N
SQUARE-D GINA 193S
SQUARE-D PAT 2N 7S
SHPH 63N FANCY 3T

King 60F is another short marked, red necked Dealer son that is off a square made Beefman 28U daughter. Udder quality is exemplified in both sides of this pedigree.

bw: 99 adj ww: 694 adj yw: 891 Dec 19/19
1500

TWO-YEAR OLD POLLED HEREFORD BULL

EPDS CE 3.7 BW 2.3 WW 54.3 YW 80.1 MILK 15.5 TM 42.7

LOT 34



STANDARD-HILL SELLECK 50F

SHL 50F PC03046322 DOB: Apr 17/18

SHF MOORE R117 Z40
GHC QUIGLEY 20B
GHC MISS KAREN 141U

SHF RIB EYE M326 R117
SHF SOLDIER S66 U121
GHC PREMIER 152M
GHC MISS LASSIE 126M

GHC-CT-GUARDIAN 40X
STANDARD-HILL CLARA 101B
SHPH 28U CLARA 102Z

MCCOY 47N THROTTLE 98S
GHC MISS LASSIE 14M
SHPH 2N BEEFMAN 28U
SHPH 63N CLARITY 58T

The first of four Quigley 20B sons to sell in this years sale. They are all muscular and moderate framed. Selleck 50F is dark cherry red with good base width and a clean/smooth front end. He would be an option to use on heifers.

bw: 89 adj ww: 670 adj yw: 939 Dec 19/19
1485

TWO-YEAR OLD POLLED HEREFORD BULL

EPDS CE 5.3 BW 1.8 WW 78.9 YW 21.5 MILK 21.5 TM 46.5

LOT 35



STANDARD-HILL JACK 21F

SHL 21F PC03046341 DOB: Apr 17/18

CHSF 52U BRIAN 5Y
CHSF 5Y DEALER 13D
CHSF 7W ROSE 22A

GHC-TABOO COALITION 52U
DXB 71N KITTIE 44S
HARVIE TAILOR MADE ET 7W
CHSF 54L ROSE ET 8R

GHC QUIGLEY 20B
STANDARD-HILL 20B KARISTA 33D
STANDARD HILL KARISTA 40B

SHF MOORE R117 Z40
GHC MISS KAREN 141U
GHC-CT-GUARDIAN 40X
SHPH 7S KARISTA 28W

Jack 21F is a heifers first calf that has strong growth numbers, great skeletal extension and an eye appealing look. The Karista cow family has long been high in performance and his dam, 33D, seems to make them with a little more bone and frame.

bw: 90 adj ww: 728 adj yw: 968 Dec 19/19
1550

TWO-YEAR OLD POLLED HEREFORD BULL

EPDS CE -1.8 BW 4.5 WW 60.2 YW 91.7 MILK 20.4 TM 50.5

LOT 36



STANDARD-HILL SELLECK 41F

SHL 41F PC03046341 DOB: Apr 17/18

SHF MOORE R117 Z40
GHC QUIGLEY 20B
GHC MISS KAREN 141U

SHF RIB EYE M326 R117
SHF SOLDIER S66 U121
GHC PREMIER 152M
GHC MISS LASSIE 126M

CLAYRIDGE HEMI 5X
STANDARD-HILL FANCY 60C
SHPH 28U FANCY 54Z

REMITALL SUPER DUTY 42S
BNC 288G MONA ET 1201R
SHPH 2N BEEFMAN 28U
SHPH 7S FORTUNE 52W



Selleck 41F is as dark as they get without adding the black allele. His birthweight might not be the ideal number but I would consider him for use on heifers. His Hemi 5X dam is a moderate 1260 lbs of beautiful bovine. A maternal sib heifer is Lot 67.

TWO-YEAR OLD POLLED HEREFORD BULL

EPDS CE 3.4 BW 3.2 WW 47.8 YW 68.6 MILK 18.6 TM 42.5

bw: 93 adj ww: 671 adj yw: 834 Dec 19/19 1515

LOT 37



STANDARD-HILL DEUCE 33F

SHL 33F PC03046344 DOB: Jan 28/18

CHSF 52U BRIAN 5Y
CHSF 5Y DEALER 13D
CHSF 7W ROSE 22A

GHC-TABOO COALITION 52U
DXB 71N KITTIE 44S
HARVIE TAILOR MADE ET 7W
CHSF 54L ROSE ET 8R

JNHR 511W MAX 151Z
STANDARD-HILL 151Z CHELAN 49D
SHPH 40X CHELAN 46Z

JNHR STOCKTON 511W
JNHR 8U ERIN 715X
GHC-CT-GUARDIAN 40X
SHPH 15U CHELAN 33X



Deuce 33F is a heifers first calf. He is well marked, squarely made, long bodied and strong topped. His dam also has a yearling bull in the sale, Lot 46.

TWO-YEAR OLD POLLED HEREFORD BULL

EPDS CE -8.8 BW 4.6 WW 49.9 YW 74.9 MILK 18.7 TM 43.7

bw: 93 adj ww: 607 adj yw: 1019 Dec 19/19 1500

LOT 38



STANDARD-HILL SELLECK 54F

SHL 54F PC03046323 DOB: Jan 26/18

SHF MOORE R117 Z40
GHC QUIGLEY 20B
GHC MISS KAREN 141U

SHF RIB EYE M326 R117
SHF SOLDIER S66 U121
GHC PREMIER 152M
GHC MISS LASSIE 126M

SHPH 7S DIEHARD 136Y
STANDARD-HILL VIVIAN 114B
SHPH 63N VIVIAN 114T

SQUARE-D PAT 2N 7S
SHPH 8M DEANA 130T
SHPH 68L ARISTOCRAT 63N
SHPH 190J PRIME VECTOR 114L



Selleck 54F is easily identifiable with his freckles and white splashes at first glance, but he's also the heaviest Hereford bull in our two year old pen. He makes up weight in his extreme length of body and how muscular he is in his rear end and top.

TWO-YEAR OLD POLLED HEREFORD BULL

EPDS CE 2.8 BW 3.5 WW 50.4 YW 75.6 MILK 20.1 TM 45.3

bw: 91 adj ww: 669 adj yw: 1110 Dec 19/19 1740

LOT 39



STANDARD-HILL SELLECK-98F

SHL 98F PC03046285 DOB: Feb 14/18

SHF MOORE R117 Z40
GHC QUIGLEY 20B
GHC MISS KAREN 141U

SHF RIB EYE M326 R117
SHF SOLDIER S66 U121
GHC PREMIER 152M
GHC MISS LASSIE 126M

SQUARE-D PAT 2N 7S
SHPH 7S MAGIE 168X
SHPH 8M MARIGOLD 2U

WILGOR 55K NORTHEASTERN 0L 2N
PLAIN LAKE 12E 1K PATRICIA 7P
SHPH 9J TUNDER 8M
POOR-BOY MAGIE'S NOTES 655L



Selleck 98F has a body type that I'd like to see on more cattle. He is moderate in frame and thick throughout while still blending smoothly in his transitions. His dam is a 1650 lbs tank that is one of our pillar 7S daughters still producing.

bw: 96 adj ww: 537 adj yw: 1013 Dec 19/19
1495

TWO-YEAR OLD POLLED HEREFORD BULL

EPDS CE 5.8 BW 2.7 WW 45.7 YW 69.8 MILK 17.2 TM 40.1

LOT 40



STANDARD-HILL MAGNET-28G

SHL 28G PC03059955 DOB: Feb 9/19

MCCOY 70Y SKYFALL 53A
MCCOY 53A MAGNET 109E
MCCOY P20 ZENA 1B

JDH 117R EQUITY 70Y ET
MCCOY 25M ALISON 64W
SHF PROGRESS P20
MCCOY 23U ZENA 142Z

STANDARD-HILL HARLAN 15B
STANDARD-HILL 15B KARISTA 40E
SHPH 7S KARISTA 28W

FCC 2U HARLAN 7Y
MHFM MISS NED 806H 603S
SQUARE-D PAT 2N 7S
SQUARE-D GINA 193S



Magnet 28G will be the first of the 109E progeny to sell. He is deep, long, and wide in dimension, dark and well pigmented in colour. His first calf mother put the bar high for herself. This cow family has produced well. He is an option for heifers.

bw: 85 adj ww: 740 adj yw: 1017 Jan 26/20
985

YEARLING POLLED HEREFORD BULL

EPDS CE 4.0 BW 2.4 WW 48.7 YW 74.7 MILK 23.0 TM 47.4

LOT 41



STANDARD-HILL MAVRICK-2G

SHL 2G PC03059930 DOB: Feb 18/19

NJW 73S W18 HOMEGROWN 8Y ET
MCCOY 8Y MAVERICK 25E
MCCOY 70Y CONNIE 87A

SHF WONDER M326 W18 ET
NJW P606 72N DAYDREAM 73S
JDH 117R EQUITY 70Y ET
MCCOY 30N CONNIE 3W

SHPH 62T CANNON 173A
STANDARD-HILL 173A DIANNE 8D
ANL 12R DIANNE 28U

SHPH 63N CANNON 62T
SHPH 5L TANGELO 31U
GHC CANICK 12R
ANL 11C DIANNE 74L



Mavrick 2G is a chunk of a bull. He is soggy in design with a large rib capacity and loose hide. He has good testicle development already and is maturing quickly. An option for cows only. His dam is a quiet cow that Jayce had in 4-H when he was 7.

bw: 101 adj ww: 666 adj yw: 1089 Jan 26/20
1025

YEARLING POLLED HEREFORD BULL

EPDS CE -4.2 BW 4.4 WW 45.3 YW 80.1 MILK 19.1 TM 41.8

LOT 42



YEARLING POLLED HEREFORD BULL

STANDARD-HILL MATER 18G

SHL 18G PC03059953 DOB: Feb 4/19

MCCOY 70Y SKYFALL 53A
MCCOY 53A MAGNET 109E
MCCOY P20 ZENA 1B

JDH 117R EQUITY 70Y ET
MCCOY 25M ALISON 64W
SHF PROGRESS P20
MCCOY 23U ZENA 142Z

BARE MR YOU TUBE 4Y
STANDARD-HILL 4Y IRIS 22E
SHPH 62T IRIS 16W

NCX WINCHESTER 745W
NCX MISS WHIPLASH 3W
SHPH 63N CANNON 62T
SHPH 10M HELENA 26R

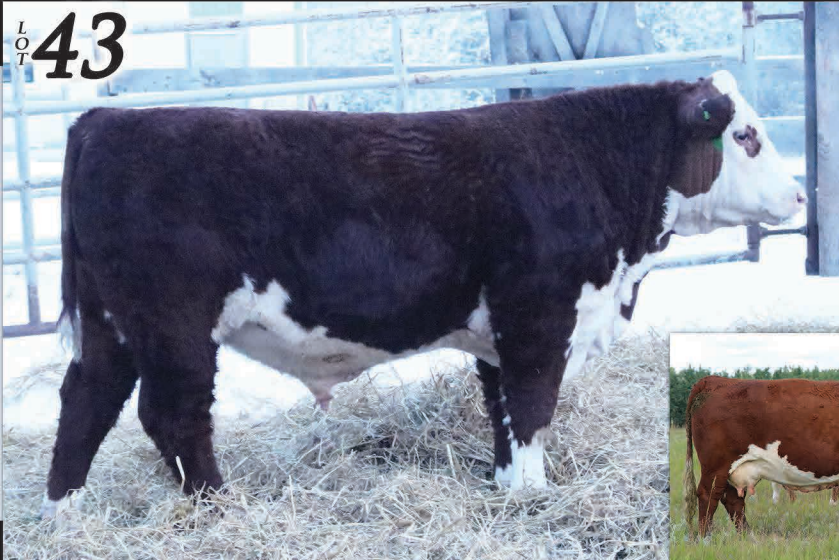


Mater 18G is a surefire heifer bull off a first calf You Tube 4Y daughter. He is level in his lines, has some muscle and is fairly well marked. His dam has a great udder, a product of our rigorous selection process.

EPDS CE 11.2 BW -1.1 WW 35.8 YW 60.9 MILK 23.4 TM 41.3

bw: 78 adj ww: 709 adj yw: 975 Jan 26/20
955

LOT 43



YEARLING POLLED HEREFORD BULL

STANDARD-HILL GAMBLER 49G

SHL 49G PC03059876 DOB: Feb 1/19

CHSF 52U BRIAN 5Y
CHSF 5Y DEALER 13D
CHSF 7W ROSE 22A

GHC-TABOO COALITION 52U
DXB 71N KITTIE 44S
HARVIE TAILOR MADE ET 7W
CHSF 54L ROSE ET 8R

GHC-CT-GUARDIAN 40X
SHPH 40X CHELAN 46Z
SHPH 15U CHELAN 33X

MCCOY 47N THROTTLE 98S
GHC MISS LASSIE 14M
HI-CLIFFE 38S UMPIRE 15U
SHPH 29R IVY 16T



Gambler 49G is a squarely made bull that is tied for the heavyweight title in the Hereford division of the yearling pen. He is strong topped, long bodied, and dark red. His dam is a powerful cow that has produced a lot of lbs of calf every year.

EPDS CE -0.6 BW 2.4 WW 50.8 YW 81.8 MILK 22.9 TM 48.3

bw: 97 adj ww: 729 adj yw: 1088 Jan 26/20
1075

LOT 44



YEARLING POLLED HEREFORD BULL

STANDARD-HILL POUNDER 78G

SHL 78G PC03059936 DOB: Feb 1/19

NJW 73S W18 HOMEGROWN 8Y ET
MCCOY 8Y MAVERICK 25E
MCCOY 70Y CONNIE 87A

SHF WONDER M326 W18 ET
NJW P606 72N DAYDREAM 73S
JDH 117R EQUITY 70Y ET
MCCOY 30N CONNIE 3W

JNHR 511W MAX 151Z
STANDARD-HILL 151Z MIRAGE 138D
SHPH 66W MIRAGE 174Z

JNHR STOCKTON 511W
JNHR 8U ERIN 715X
SHPH 274S BARON 66W
SHPH 127S MIRAGE 43U



Cow bull prospect that you will admire for his overall mass, his bone, and his maternal traits that he can pass on. His dam is one of my favourite young cows because of her eye appeal and base width. Pounder 78G is heterozygous polled.

EPDS CE -5.8 BW 6.1 WW 50.2 YW 84.2 MILK 23.0 TM 48.1

bw: 108 adj ww: 739 adj yw: 1089 Jan 26/20
1075



LOT 45

STANDARD-HILL DEALER 120G

SHL 120G PC03059945 DOB: Feb 11/19

CHSF 52U BRIAN 5Y
CHSF 5Y DEALER 13D
CHSF 7W ROSE 22A

GHC-TABOO COALITION 52U
DXB 71N KITTIE 44S
HARVIE TAILOR MADE ET 7W
CHSF 54L ROSE ET 8R

NJW 144Y 174X DIABLO 180A
WCC 180A SPIRIT QUEEN 6437D
WCC MISS MISSISSIPPI 437B

NJW 76S 4037 DURANGO SPIRIT 174X
NJW 69S 38W BEEFY ANGIE 144Y
GRANDVIEW CMR MR DOM 86P Y332
SQUARE-D MAID 5037X

Surefire heifer bull here with quite a bit of red pigment. His dam is a 1400 lbs cow with lots of length and an udder that has small teats and strong suspension.

YEARLING POLLED HEREFORD BULL

EPDS CE 7.0 BW -0.2 WW 45.4 YW 65.7 MILK 18.6 TM 41.3 **865**

bw: 76 adj ww: 646 adj yw: 893 Jan 26/20



LOT 46

STANDARD-HILL MAVRICK 33G

SHL 33G PC03059934 DOB: Feb 16/19

NJW 73S W18 HOMEGROWN 8Y ET
MCCOY 8Y MAVERICK 25E
MCCOY 70Y CONNIE 87A

SHF WONDER M326 W18 ET
NJW P606 72N DAYDREAM 73S
JDH 117R EQUITY 70Y ET
MCCOY 30N CONNIE 3W

JNHR 511W MAX 151Z
STANDARD-HILL 151Z CHELAN 49D
SHPH 40X CHELAN 46Z

JNHR STOCKTON 511W
JNHR 8U ERIN 715X
GHC-CT-GUARDIAN 40X
SHPH 15U CHELAN 33X

Mavrick 33G is another soft made 25E calf with loads of pigment and good growth. His birthweight says use only on cows. He is still smooth and attractive in his make-up, a must in our selection process. A maternal brother sells as Lot 37.

YEARLING POLLED HEREFORD BULL

EPDS CE 0.3 BW 3.1 WW 29.1 YW 52.3 MILK 26 TM 40.6 **975**

bw: 101 adj ww: 699 adj yw: 1021 Jan 26/20

FUTURE Sire STANDARD-HILL MATER 82F



DAM

Home grown bull of Jayce's. This guy is sired by TCF 305A Stacked 609D, which we selected as a calf from the Reid's and he went on to be a class winner at Agribition. His dam is a Pat 7S daughter that has had many high sellers. 82F is soggy, well marked, and muscular.

STANDARD HILL LIVESTOCK POLLED HEREFORD

FUTURE Sire STANDARD-HILL ACE 96F



DAM

Ace will get the job of carrying on from his sire, CHSF 5Y Dealer 13D. He was a standout as an April born calf, and I ended up pulling him in with his Pat 7S dam for the field day with the February calves where he looked competitive. His 78 lbs BW will put him in the heifer pasture.

STANDARD HILL LIVESTOCK POLLED HEREFORD

Welcome from Eye Hill

On behalf of the Schachtel family and Eye Hill Stock Farm, welcome to the Standard Hill Connection Sale. We are very excited to once again work with the Myer family, and thank everyone for their support this past year. As far as 2019 went, it was a great year for our family and the kids continue to become more involved and part of day to day activities of tractor/combine rides and checking the cattle. Amidst the hustle and bustle they keep things in perspective and make you smile at some point daily. At the time I write this we are at the front part of calving and its amazing how a few new calves bouncing around breathe a new sense of energy into the operation. With some new sires, proven AI matings and some embryo calves it really makes it an exciting time of the year.

This year's bull pen is deep in terms quality and quantity of heifer bull options. There also is a real nice set of growthy maternal cow bulls. The bulls have been rigorously culled to the number we have on offer here today. This year offering will feature a large set of calving ease sons of "Roosevelt" a couple of a new "Lancer" sire group as well as the first son of a bull called "Cowboy Kind". Our herd philosophy never waivers in focusing on maternal calving ease genetics. Every bull we have on offer is a bull that we would use in our commercial program. Most importantly, they are raised by dams that we are proud to own and would love to show you.

The bulls were weaned on Sept. 7 and actual weaning weights were taken that day with no creep feed throughout their development. All the pictures and videos were taken on Jan. 23. The bulls are developed on a moderate growing ration to promote longevity and target growth rate from 2.5 – 3 lbs a day. You're welcome to tour the bulls anytime leading up to sale date and please call if you have any questions. Thanks for your interest.

Brennan, Taryn, Resch & Lyndi
Marshall, SK

Pius and Theresa
Macklin, SK



REF **Sire**



EYE HILL STOCK FARM

RED ANGUS

RED EYE HILL LANCER 45E

Co-owned with Ganzer Ranching. The sire Milk Creek Lancer 0119X had a tremendous impact in our program. He sired cattle with moderate birthweights and exceptional growth. His sons were quite popular so when father time came for 0119X; we deemed 45E as a suitable replacement. 45E is backed by an awesome outcross dam that has been a great producer. 45E is very sound, great footed, long bodied with a huge hip. He wasn't slated for service until this year but on one March evening he escaped out of his pen and found his way to the cow/calf pairs. He managed to service 2 females in about 10 hours in the dark at about 12 months of age. Some of the best breeding decisions come by accident as on offer today we have 2 of his first sons. We look forward to using him more this spring.



SON
LOT 47



SON
LOT 48

REF **Sire**



EYE HILL STOCK FARM

RED ANGUS

RED FLYING K ROOSEVELT 46C

Co-owned with ValleyHills Angus. Purchased in 2016 from Flying K Red Angus. 46C has really become an important piece of the puzzle within our breeding program. It is quite evident in the large number of sons we have in the sale today as he seen heavy use in the 2018 and 2019 breeding seasons. He sure stamps them in terms of overall shape, correctness, structure, smoothness and their hair coats. Calves that are born extremely easy but really grow afterwards and a large percentage are making the keeper pen. Roosevelt is moderate, smooth made, nicely patterned with great dark feet on him. The daughters we have retained are beautiful uddered with lots of milk. Birthweight average for his progeny so far is 71lbs.



SON
LOT 57



DAUGHTER

REF **Sire**



EYE HILL STOCK FARM

RED ANGUS

RED COCKBURN COWBOY KIND 754E

Purchased in the spring of 2018 as one of the feature bulls in the Cockburn/Merit Bull Sale. We admired him for his overall growth, rib shape and muscle pattern yet having a moderate bw. He also offers a bit of a genetic twist to our program. Most importantly he is backed by one of Cockburn's most productive cows and is always talked about by anyone who has seen her. Only 1 son on offer this year as he was a heifer producing sire last year; the replacement pen has quite a number of them. They are extremely broody and have a real maternal look to them; we are quite excited to see how they develop. Look for more sons next year as we will have close to 35 calves from him this year.



SON
LOT 56

LOT 47



YEARLING RED ANGUS BULL

EPDS BW -0.7 WW 26 YW 45 MILK 19 TM 32 CE 7.5

RED EYE HILL LANCER 63F

PBS 63F 2120224 DOB: Dec 22/18

RED MLK CRK LANCER 0119
RED EYE HILL LANCER 45E
EYE HILL ELLIE 1224

RED BUF CRK LANCER-F L297
RED MLK CRK EMU MAR 812
RED LAZY MC SPLASH 14T
EYE HILL ELLIE 1224

RED LAZY MC SPLASH 14T
RED EYE HILL LASS 1223
RED EL-DEE LASS 571R

RED LAZY MC SMASH 41N
LAZY MC BESS 4K
RED BASIN SENSATION 702E
RED EL-DEE LASS 271M

Nicely balanced Lancer son, could be used on heifers or cows. Lass cow family has been main stay for calving ease and leaving top notch daughters. Maternal brother last year sold to Robert Preece.

bw: 86 Sep 7/19 ww: 815 Jan 21/20
1180

LOT 48



YEARLING RED ANGUS BULL

EPDS BW 0.5 WW 25 YW 41 MILK 21 TM 34 CE 4.5

RED EYE HILL LANCER 64F

PBS 64F 2120225 DOB: Dec 24/18

RED MLK CRK LANCER 0119
RED EYE HILL LANCER 45E
EYE HILL ELLIE 1224

RED BUF CRK LANCER-F L297
RED MLK CRK EMU MAR 812
RED LAZY MC SPLASH 14T
EYE HILL ELLIE 1224

RED LAZY MC SPLASH 14T
RED EYE HILL SHAWNEE 917
RED EYE HILL SHAWNEE 525

RED LAZY MC SMASH 41N
LAZY MC BESS 4K
RED GOLD-BAR LANDMARK K 214L
RED LAZY M SHAWNEE 42E



FEATURE BULL. Made right from the ground up. Thick, deep and long, has been a standout all summer. Great structure, performance and a bull that is quickly noticed in the pen. Dam is no miss cow siring a Boss son 2 years ago to Dennis and Theresa Ulmer as well as a bred heifer this fall to Kenray ranch at the Touch Of Class Sale.

bw: 90 Sep 7/19 ww: 875 Jan 21/20
1325

LOT 49



YEARLING RED ANGUS BULL

EPDS BW -1.2 WW 30 YW 46 MILK 21 TM 36 CE 7.5

RED EYE HILL ROSEVELT 1G

PBS 1G 2109118 DOB: Jan 14/19

RED BIEBER ROOSEVELT W384
RED FLYING K ROOSEVELT 46C
RED FLYING K LANA 185Z

RED BIEBER ROUGH RIDER 10712
RED BEIBER SHEBA 9602
RED BECKTON NEBULA U856
RED FLYING K LASSIE 114S

RED MLK CRK LANCER 0119
EYE HILL ELLIE 1324
EYE HILL ELLIE 1130

RED BUF CRK LANCER-F L297
RED MLK CRK EMU MAR 812
RED LAZY MC SPLASH 14T
EYE HILL ELLIE 511

A nice blend of calving ease with growth. Long bodied bull with extra frame and a very attractive dark red hair coat.

bw: 82 Sep 7/19 ww: 750 Jan 21/20
1175

LOT 50



RED EYE HILL ROSSEVELT 2G

PBS 2G 2109119 DOB: Jan 15/19

RED BIEBER ROOSEVELT W384
RED FLYING K ROOSEVELT 46C
RED FLYING K LANA 185Z

RED BIEBER ROUGH RIDER 10712
RED BEIBER SHEBA 9602
RED BECKTON NEBULA U856
RED FLYING K LASSIE 114S

RED YY TOCKET 97W
RED HOWE MS CRESTON 39A
RED HOWE MS CRESTON 79Y

RED YY VOYAGEUR 796T
RED YY OWYHEE 797T
RED HOWE BOLD EDITION 80T
RED HOWE MS CRESTON 37S



A bull that really commands your attention everytime you see him. Very stout and deep quartered; a real easy doing bull that will add some payweight to his calves. Dam is a heavy milking female that has put a number of replacement cattle into the herd.

YEARLING RED ANGUS BULL

EPDS BW -1.3 WW 27 YW 42 MILK 18 TM 32 CE 11.0

bw: 88 Sep 7/19 ww: 735 Jan 21/20
1185

LOT 51



RED EYE HILL ROSSEVELT 4G

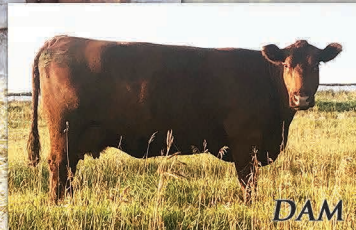
PBS 4G 2109120 DOB: Jan 18/19

RED BIEBER ROOSEVELT W384
RED FLYING K ROOSEVELT 46C
RED FLYING K LANA 185Z

RED BIEBER ROUGH RIDER 10712
RED BEIBER SHEBA 9602
RED BECKTON NEBULA U856
RED FLYING K LASSIE 114S

RED SSS N. KING 652T
RED EYE HILL SYRINGA 1439
RED BAYSHORE SPICE 126S

RED 5L NORSEMAN KING 2291
CROWFOOT BLACKBIRD 3023N
RED PIRO NEW BRAND 110L
RED GEIS SYRINGA 125'03



Sure fire heifer bull. Smooth shouldered, nice skulled, nice patterned Rossevelt son. Dam raised the high seller in last year's sale, selling to Collinge Land and Cattle.

YEARLING RED ANGUS BULL

EPDS BW -1.9 WW 18 YW 29 MILK 22 TM 31 CE 9.0

bw: 78 Sep 7/19 ww: 665 Jan 21/20
1055

LOT 52



RED EYE HILL ROSSEVELT 7G

PBS 7G 2109124 DOB: Jan 23/19

RED BIEBER ROOSEVELT W384
RED FLYING K ROOSEVELT 46C
RED FLYING K LANA 185Z

RED BIEBER ROUGH RIDER 10712
RED BEIBER SHEBA 9602
RED BECKTON NEBULA U856
RED FLYING K LASSIE 114S

RED MLK LANCER 0119
RED EYE HILL ELBA 1636
RED EYE HILL ELBA 1010

RED BUF CRK LANCER-F L297
RED MLK CRK EMU MAR 812
RED LAZY MC SPLASH 14T
RED GET-A-LONG RUTHE 0164

Another great Roosevelt heifer bull, he sure stamps them. Dam is a long bodied; beautiful uddered Lancer daughter.

YEARLING RED ANGUS BULL

EPDS BW -2.0 WW 26 YW 40 MILK 20 TM 33 CE 8.0

bw: 76 Sep 7/19 ww: 680 Jan 21/20
1075

LOT 53



TYLER HARRIS



FULL SIB

RED EYE HILL ROSSEVELT 9G

PBS 9G 2109125 DOB: Jan 26/19

RED BIEBER ROOSEVELT W384 RED BIEBER ROUGH RIDER 10712
 RED FLYING K ROOSEVELT 46C RED BEIBER SHEBA 9602
 RED FLYING K LANA 185Z RED BECKTON NEBULA U856
 RED FLYING K LASSIE 114S

RED MLK LANCER 0119 RED BUF CRK LANCER-F L297
 RED EYE HILL POTEET 1618 RED MLK CRK EMU MAR 812
 RED GEISS MISS POTEET 68'10 RED GEIS KNIGHT HAWK 27'05
 RED RIVERDALE MISS POTEET 368L

FEATURE BULL. As complete a heifer bull prospect as we have offered. Dark red, long bodied, smooth skulled, with a great muscle pattern. All summer he patrolled the pasture like a herd bull. Out of a young Lancer daughter who really produces. Her first daughter was a highlight at the Touch Of Class selling to Double F Cattle Company as part of their upcoming red program.

bw: 78 Sep 7/19 ww: 740 Jan 21/20
 1165

YEARLING RED ANGUS BULL

EPDS BW -1.4 WW 31 YW 45 MILK 21 TM 37 CE 7.0

LOT 54



TYLER HARRIS



DAM

RED EYE HILL ROSSEVELT 12G

PBS 12G 2109127 DOB: Jan 27/19

RED BIEBER ROOSEVELT W384 RED BIEBER ROUGH RIDER 10712
 RED FLYING K ROOSEVELT 46C RED BEIBER SHEBA 9602
 RED FLYING K LANA 185Z RED BECKTON NEBULA U856
 RED FLYING K LASSIE 114S

RED SOUTHLAND ENERGIZER 100R RED NORTHLINE EQUALIZER 189N
 RED EYE HILL JEBU 704 RED SOUTHLAND HEATHER 131N
 RED BAR-E-L JEBU 37R RED TER-RON DIGGER 11L
 RED BAR-E-L JEBU 10N

12G is a tank. Moderate in frame size this is a very deep bodied dark made bull. Dam annually produces moderate sired easy calving options.

bw: 72 Sep 7/19 ww: 685 Jan 21/20
 1035

YEARLING RED ANGUS BULL

EPDS BW -3.2 WW 10 YW 12 MILK 19 TM 24 CE 11.0

LOT 55



TYLER HARRIS



DAM

RED EYE HILL ROSSEVELT 18G

PBS 18G 2109129 DOB: Feb 4/19

RED BIEBER ROOSEVELT W384 RED BIEBER ROUGH RIDER 10712
 RED FLYING K ROOSEVELT 46C RED BEIBER SHEBA 9602
 RED FLYING K LANA 185Z RED BECKTON NEBULA U856
 RED FLYING K LASSIE 114S

RED LAZY MC SPLASH 14T RED LAZY MS SMASH 41N
 RED EYE HILL JESS 1204 LAZY MC BESS 4K
 RED EYE HILL JEBU 704 RED SOUTHLAND ENERGIZER 100R
 RED BAR-E-L JEBU 37R

Dark, correct and easy fleshing describes 18G. His is very square made and built like a brick but yet is very nice headed and smooth shouldered. A bull that with ability to cover heifers with some performance behind them. Reminds me so much of his sire at this age when we purchased him from Flying K. He is a maternal brother to the high seller to Lone Hill Angus 2 years ago.

bw: 82 Sep 7/19 ww: 730 Jan 21/20
 1075

YEARLING RED ANGUS BULL

EPDS BW -2.4 WW 11 YW 20 MILK 21 TM 27 CE 12.0

LOT

56



TYLER HARRIS
CATTLE

RED EYE HILL COWBOY KIND 26G

PBS 26G 2119748 DOB: Feb 11/19

RED PIE THE COW KIND 343
RED COCKBURN COWBOY KIND 754E
RED COCKBURN MS HAUCK 459W

RED BUG CRK THE RIGHT KINDU199
RED PIE CASCADE 561
RED BAR-E-L RIBEYE 103R
RED COCKBURN MS HAUCK 28N

RED LAZY MC SPLASH 14T
RED EYE HILL LASS 1125
RED EL-DEE LASS 571R

RED LAZY MS SMASH 41N
LAZY MC BESS 4K
RED BASIN SENSATION 702E
RED EL-DEE LASS 271M

First Cowboy Kind to sell! Big time performance bull, with the ability to add stretch, depth and some muscle. He's quite easy to find in the pen. The 1125 is one of the most consistent cows on the farm with calves annually rising to the top.

YEARLING RED ANGUS BULL

EPDS BW 0.9 WW 34 YW 66 MILK 19 TM 36 CE 3.5

bw: 88 Sep 7/19 ww: 810 Jan 21/20
1180

LOT

57



TYLER HARRIS
CATTLE

RED EYE HILL ROSSEVELT 28G

PBS 28G 2109132 DOB: Feb 14/19

RED BIEBER ROOSEVELT W384
RED FLYING K ROOSEVELT 46C
RED FLYING K LANA 185Z

RED BIEBER ROUGH RIDER 10712
RED BEIBER SHEBA 9602
RED BECKTON NEBULA U856
RED FLYING K LASSIE 114S

RED GEIS KNIGHT HAWK 27*05
RED GEIS MISS POTEET 68*10
RED RIVERDALE MISS POTEET 368L

RED GEIS KNIGHT HAWK 14*02
RE JD LANN BLOCKANA 5M
RED SSS BOMBER 789G
RED RIVERDALE COUNTESS 30F



DAM

FEATURE BULL. Tough to fault this top Roosevelt son. He offers as much balance, shape and hair coat as penmates. He's very complete. A bull made for heifer pen but can easily graduate to the cow herd over the years. His dam the 68x cow is a favorite among visitors and simply never misses. She is also the grandam of the 9G bull.

YEARLING RED ANGUS BULL

EPDS BW -1.5 WW 23 YW 33 MILK 18 TM 30 CE 8.5

bw: 80 Sep 7/19 ww: 725 Jan 21/20
1120

LOT

58



TYLER HARRIS
CATTLE

RED EYE HILL ROSSEVELT 47G

PBS 47G 2109141 DOB: Feb 23/19

RED BIEBER ROOSEVELT W384
RED FLYING K ROOSEVELT 46C
RED FLYING K LANA 185Z

RED BIEBER ROUGH RIDER 10712
RED BEIBER SHEBA 9602
RED BECKTON NEBULA U856
RED FLYING K LASSIE 114S

RED SSS N. KING 652T
RED EYE HILL ELLIE 1425
GET-A-LONG ELLIE 178

RED 5L NORSEMAN KING 2291
CROWFOOT BLACKBIRD 3023N
RED BAKERS CENTURY
GET-A-LONG ELBA 834



DAM

Smooth made, low birth weight Roosevelt son. Designed for the heifer pen with a nice pattern and tremendous hair coat.

YEARLING RED ANGUS BULL

EPDS BW -0.2 WW 24 YW 39 MILK 21 TM 33 CE 8.0

bw: 78 Sep 7/19 ww: 635 Jan 21/20
1010



YEARLING BLACK ANGUS HEIFER

EPDS BW 0.2 WW 55 YW 81 MILK 17 TM 45 CE 7.0

STANDARD HILL ANN 318G

SHL 318G 2115548 DOB: Mar 5/19
 HF JUNCTION 18B YOUNG DALE YOHANN 39Y
 BELVIN DISPUTE 6125 HF ELSIEMERE 106W
 BARBARA OF RING CREEK 65Y RING CREEK BARDOLENE 69W
 BARBARA OF RING CREEK 31W
 SCC BANDO 45A LLB 184S BANO 502X
 STANDARD HILL ANN 339E SCC PRIDE 31X
 STANDARD HILL LADY ANN 20X S A V BISMARCK 5682
 STANDARD HILL LADY ANN 33T

Ann 318G should be a broody female with some power. We have a very strong set of the Dispute daughters coming online with the first group calving already and a larger number in the yearling pen. 318's mother was 1355 lbs after she weaned her as a first calver, so there is some frame and a lot of capacity in the equation. Notice this heifer's later birthdate.

adj
 bw: 70 ww: 680 Dec 19/19
730



YEARLING BLACK ANGUS HEIFER

EPDS BW 3.2 WW 46 YW 69 MILK 17 TM 40 CE -5.0

STANDARD HILL ANN 346G

SHL 346G 2124671 DOB: Feb 1/19
 HF JUNCTION 18B YOUNG DALE YOHANN 39Y
 BELVIN DISPUTE 6125 HF ELSIEMERE 106W
 BARBARA OF RING CREEK 65Y RING CREEK BARDOLENE 69W
 BARBARA OF RING CREEK 31W
 WILBAR TRADE SECRET 644B DMM TRADE SECRET 36X
 STANDARD HILL ANN 380E WILBAR MAYFLOWER 412Y
 STANDARD HILL ANN 484B GVC SETTLER 004X
 STANDARD HILL LADY ANN 24R



Ann 346G is a very squarely made heifer with a strong top, wide base, and a large hip. She is off a first calf Trade Secret heifer that is moderate and blocky and she has an udder like you'd like on every one of your cows to have.

adj
 bw: 88 ww: 592 Dec 19/19
760



YEARLING BLACK ANGUS HEIFER

EPDS BW -2.5 WW 25 YW 45 MILK 31 TM 44 CE 8.0

STANDARD HILL ROXY 491G

SHL 491G 2093727 DOB: Feb 5/19
 GVC SETTLER 004X S A V PIONEER 7301
 STANDARD HILL MAJOR 350C G V C FRONTIER LADY 272M
 STANDARD HILL LADY ANN 117X LLB 557S TRADITION 181U
 STANDARD HILL LADY ANN 41R
 BASIN RAINMAKER 814Z BASIN RAINMAKER D S 380U
 STANDARD HILL BLACKBIRD 16S BASIN PAMELLA 676X
 STANDARD HILL BLACKBIRD 63P STANDARD HILL TRAVELER 6G
 STANDARD HILL BLACKBIRD 34L



Roxy 491G is a great cow prospect off our Major 350C herdsire and an old faithful Basin Rainmaker 814Z daughter. The 350C daughters we calved so far have not disappointed, with a lot of milk and good udder characteristics. 16S, 491's dam, has been a favourite of mine since we bought the Angus cows. A must see sale day.

adj
 bw: 70 ww: 600 Dec 19/19
790



STANDARD HILL ANN 355G

SHL 355G 2093743 DOB: Apr 24/19

GVC SETTLER 004X
STANDARD HILL MAJOR 350C
STANDARD HILL LADY ANN 117X

S A V PIONEER 7301
G V C FRONTIER LADY 272M
LLB 557S TRADITION 181U
STANDARD HILL LADY ANN 41R

S A V FINAL ANSWER 0035
STANDARD HILL LADY ANN 8Y
STANDARD HILL LADY ANN 60W

SITZ TRAVELER 8180
S A V EMULOUS 8145
HYLINE RIGHT TIME 338
STANDARD HILL LADY ANN 14M



A very eye appealing Major daughter, level in her lines, refined in her front end, and promises to have a great udder. Her dam is an own Final Answer daughter, one of the many we have had a great deal of success with, they last and are productive.

adj
bw: 75 ww: 657 Dec 19/19
675

YEARLING BLACK ANGUS HEIFER

EPDS BW 0.6 WW 49 YW 88 MILK 27 TM 52 CE 5.0



STANDARD HILL ROXY 381G

SHL 381G 2124672 DOB: Mar 31/19

HF TIGER 5T
STANDARD HILL BENGAL 479A
STANDARD HILL LADY ANN 23P

HF KODIAK 5R
HF ECHO 84R
R R 9440 SCOTCH CAP 1483
STANDARD HILL LADY 44G

STANDARD HILL COLONIST 375C
STANDARD HILL ROXY 379E
STANDARD HILL ROXY 376C

GVC SETTLER 004X
STANDARD HILL LADY ANN 111Y
BASIN EXCITEMENT
STANDARD HILL BEBE 345A



A moderate Bengal daughter off a highly fertile, short gestation, Settler grand daughter. 381G is stout and feminine. The Bengal daughters are hairy, soft made, and should last a long time. 381's dam is also moderate, but she first calved at 14 months.

adj
bw: 68 ww: 611 Dec 19/19
640

YEARLING BLACK ANGUS HEIFER

EPDS BW -0.1 WW 35 YW 67 MILK 23 TM 41 CE 7.0



STANDARD HILL ANN 357G

SHL 357G 2093749 DOB: Apr 18/19

HF TIGER 5T
STANDARD HILL BENGAL 479A
STANDARD HILL LADY ANN 23P

HF KODIAK 5R
HF ECHO 84R
R R 9440 SCOTCH CAP 1483
STANDARD HILL LADY 44G

EARLY SUNSET FREEDOM 89U
STANDARD HILL ANN 322A
STANDARD HILL LADY ANN 83U

PSF FREEDOM 89U
ROSE HILL MISS DAWN 31Z
GBT DESIGN 878 41P
STANDARD HILL LADY ANN 57P



Ann 357G is the final of what I would call a very strong set of replacement females up for sale. We strive to select bulls that are superior enough that we can build large maternal groups. Each heifer on offer is off a proven herd sire, two of three home raised, and the Ann and Roxy cow families are two of our largest and best. Buy with confidence.

adj
bw: 81 ww: 525 Dec 19/19
680

YEARLING BLACK ANGUS HEIFER

EPDS BW 1.0 WW 33 YW 66 MILK 23 TM 40 CE 3.0

LOT 65



YEARLING POLLED HEREFORD HEIFER

EPDS CE -2.1 BW 3.7 WW 58.9 YW 90.0 MILK 15.3 TM 44.8

STANDARD-HILL LOGAN 52G

SHL 52G PC03059962 DOB: Feb 3/19

CHSF 52U BRIAN 5Y
CHSF 5Y DEALER 13D
CHSF 7W ROSE 22A

GHC-TABOO COALITION 52U
DXB 71N KITTIE 44S
HARVIE TAILOR MADE ET 7W
CHSF 54L ROSE ET 8R

SHPH 62T CANNON 173A
STANDARD-HILL 173A LOGAN 187E
SQUARE-D LOGAN 603Y

SHPH 63N CANNON 62T
SHPH 5L TANGELO 31U
SQUARE-D STYLUS 328U
SQUARE-D ELLIE 6003S

Logan 52G is an attractive female. She is level in her lines, fairly plentiful in pigment, skeletally extended and clean fonted. She was a favourite on last summer's NW Hereford Tour. She was her dam's first calf, an admirable start. She will have a great udder.

bw: 82 adj
ww: 636 Dec 19/19
675

LOT 66



YEARLING POLLED HEREFORD HEIFER

EPDS CE -5.1 BW 2.8 WW 56.4 YW 85.9 MILK 15.7 TM 43.9

STANDARD-HILL STAR 172G

SHL 172G PC03059873 DOB: Mar 11/19

CHSF 52U BRIAN 5Y
CHSF 5Y DEALER 13D
CHSF 7W ROSE 22A

GHC-TABOO COALITION 52U
DXB 71N KITTIE 44S
HARVIE TAILOR MADE ET 7W
CHSF 54L ROSE ET 8R

KLONDIKE 500Z FEDERATION 7C
SHPH 7C STAR 133Y
SQUARE-D STAR 9053W

GK FED EX
GK SPIRIT QUEEN 42A
HB STAR BATTLE GROUND 2013
C&T 86P DIMPLE 53T

Star 172G was another favourite on the NW Tour this past August. She is dark red, like her momma and papa, long bodied and level. She is strong topped and should have a small teated, level udder. She will be the largest framed of the heifers on offer.

bw: 89 adj
ww: 634 Dec 19/19
740

LOT 67



YEARLING POLLED HEREFORD HEIFER

EPDS CE 10.4 BW 0.4 WW 32.1 YW 53.6 MILK 23.0 TM 39.1

STANDARD-HILL FANCY 41G

SHL 41G PC03059924 DOB: Apr 14/19

NJW 73S W18 HOMEGROWN 8Y ET
MCCOY 8Y MAVERICK 25E
MCCOY 70Y CONNIE 87A

SHF WONDER M326 W18 ET
NJW P606 72N DAYDREAM 73S
JDH 117R EQUITY 70Y ET
MCCOY 30N CONNIE 3W

CLAYRIDGE HEMI 5X
STANDARD-HILL FANCY 60C
SHPH 28U FANCY 54Z

REMITALL SUPER DUTY 42S
BNC 288G MONA ET 1201R
SHPH 2N BEEFMAN 28U
SHPH 7S FORTUNE 52W

Fancy 41G is an example of her name. She is level in her lines, squarely made, feminine, and deep cherry red. She is going to be a moderate female. Her dam is a 1250 lbs cow with a great look and udder. 41G is the first Maverick female to sell. Brother is Lot 36.

bw: 73 adj
ww: 539 Dec 19/19
575

LOT 68



STANDARD-HILL BONNIE 117G

SHL 117G PC03059944 DOB: Feb 11/19

BARE MR YOU TUBE 4Y
STANDARD-HILL MATRIX 49E
SHPH 40X CHELAN 46Z

NCX WINCHESTER 745W
NCX MISS WHIPLASH 3W
GHC-CT-GUARDIAN 40X
SHPH 15U CHELAN 33X

SQUARE-D 533P FUTURE 795Y
WCC 795Y BONNIE 6261D
SQUARE-D RITA 1261Z

STAR BRIGHT FUTURE 533P ET
SQUARE-D SELINE 795S
REMITALL SUPER DUTY 42S
HINTERLAND TENDER HEART 61P

An attractive Matrix 49E heifer that is clean fronted, level topped, sound structured, and dark red. Her dam was part of a package of bred heifers we purchased from Wascana Cattle Company by private treaty. She was also dark and has a good udder.

bw: 71 adj ww: 481 Dec 19/19

YEARLING POLLED HEREFORD HEIFER

EPDS CE 6.5 BW 1.2 WW 45.9 YW 75.8 MILK 21.6 TM 44.6

675

LOT 69



STANDARD-HILL CLARA 50G

SHL 50G PC03059915 DOB: Apr 29/19

ANL S1 425X UNTAPPED 182W 94B
STANDARD-HILL UNTAPPED 59D
SHPH 20X FAITH 51Z

TH 89T 742 UNTAPPED 425X ET
ANL MD 13S MINDY 182W
BR 33H LAD 20X
SQUARE-D ELLIE 84W

GHC-CT-GUARDIAN 40X
STANDARD-HILL CLARA 101B
SHPH 28U CLARA 102Z

MCCOY 47N THROTTLE 98S
GHC MISS LASSIE 14M
SHPH 2N BEEFMAN 28U
SHPH 63N CLARITY 58T

A moderate daughter of our Untapped bull that we are excited to use heavier this coming breeding season. He is moderate himself, well marked, level, easy keeping, muscular, good hipped, and has a large foot with a good straight toe. 50G's dam is a 1650 lbs cow that is dark, long, and marked up with abundant dark red pigment. Notice the birth date of this heifer.

bw: 90 adj ww: 580 Dec 19/19

YEARLING POLLED HEREFORD HEIFER

EPDS CE 1.0 BW 2.2 WW 44.9 YW 71.1 MILK 21.7 TM 44.2

585

LOT 70



STANDARD-HILL MISSY 100G

SHL 100G PC03059941 DOB: Feb 10/19

BARE MR YOU TUBE 4Y
STANDARD-HILL MATRIX 49E
SHPH 40X CHELAN 46Z

NCX WINCHESTER 745W
NCX MISS WHIPLASH 3W
GHC-CT-GUARDIAN 40X
SHPH 15U CHELAN 33X

GRANDVIEW CMR MR DOM 86P Y332
WCC MISS MISSISSIPPI 619D
BAR-J-M TANYA 19T

CMR ILR DOMINO 86P
GRANDVIEW CMR LADY ONLINE 9013ET
BAR-J-M ROCKY 120L
MOOREHAVEN DELIA NELL 122L 15N

Missy 100G is a uniquely marked heifer with a lot of growth. Her dam is one of a nice group of daughters off Mr Dom Y332 that we have purchased through multiple transactions with Wascana Cattle Company. We like them for their growth, attractiveness, and udder quality.

bw: 98 adj ww: 586 Dec 19/19

YEARLING POLLED HEREFORD HEIFER

EPDS CE -3.0 BW 5.0 WW 50.3 YW 84.0 MILK 22.8 TM 48.0

720

HIGH Sellers

2019 STANDARD HILL CONNECTION



LOT 30 SOLD TO TREVOR MCCREA



LOT 41 SOLD TO FORT PITT FARMS



LOT 66 SOLD TO COLLINGE LAND & CATTLE



LOT 4 SOLD TO RON SCHLEKEWY



LOT 49 SOLD TO REAL POULIOT



LOT 69 SOLD TO JAMES BARSS



LOT 12 SOLD TO BRAD KINAR



LOT 77 SOLD TO TRISHA & SHAWN RUE

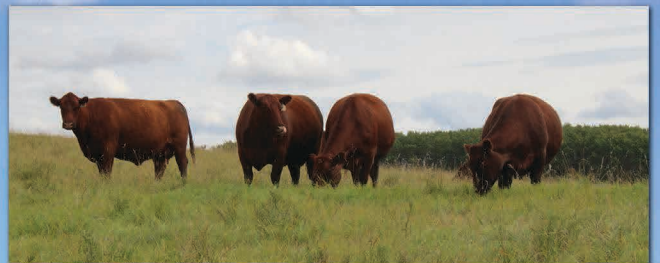
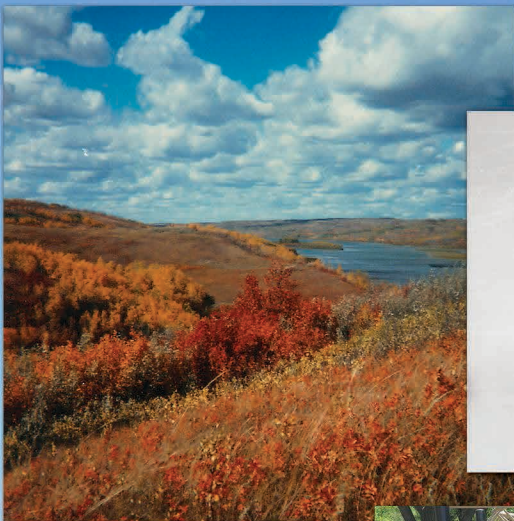


LOT 82 SOLD TO RIVERBRIDGE RANCH

STANDARD HILL LIVESTOCK BLACK ANGUS & POLLED HEREFORD

Thank You to all Bidders and Buyers from past sales

EYE HILL STOCK FARM RED ANGUS



Terms and Conditions

Terms: All sales are in Canadian Funds, payable by cash or cheque on sale day, unless other arrangements have been made prior to the sale. Every animal sells to the highest bidder, and in cases of disputes the auctioneer will make the decision to reopen the bidding. The auctioneer's decision will be final. Each Animal becomes the responsibility of the purchaser as soon as sold.

Volume Discount: Buy any three individual head, get a 3% discount.

Junior Discount: Any junior, less than 21 years old, will receive a 5% discount on heifers.

Announcements: Any announcements from the stand take precedence over print.

Guarantee: All animals are backed by the respective breed associations Breeder Guarantee. All bulls will be semen tested before the sale, weather permitting. A list of results will be available at the sale or by calling the consignors the day before the sale. In the case of harsh winter weather leading up to semen testing, bull will be palpated and scrotal measured prior to the sale and semen tested once the weather effects are less impactful. Bulls that are semen tested prior to the sale may be deferred. Deferred bulls may be sold, in which case they will be semen tested prior to delivery. Hereford bulls sold to purebred breeders will be parentage and genetic defect tested by the seller prior to delivery. Angus bulls sold to purebred breeders will be parentage verified by the seller prior to delivery. Any other parentage or defect testing may be requested by the purchaser, however cost may be the responsibility of the purchaser. All genetic testing results will be shared with the purchaser, with true and clean tests guaranteed.

Delivery: Free delivery within 500 km or to central locations in Saskatchewan and Alberta with consideration of volume and value of purchases.

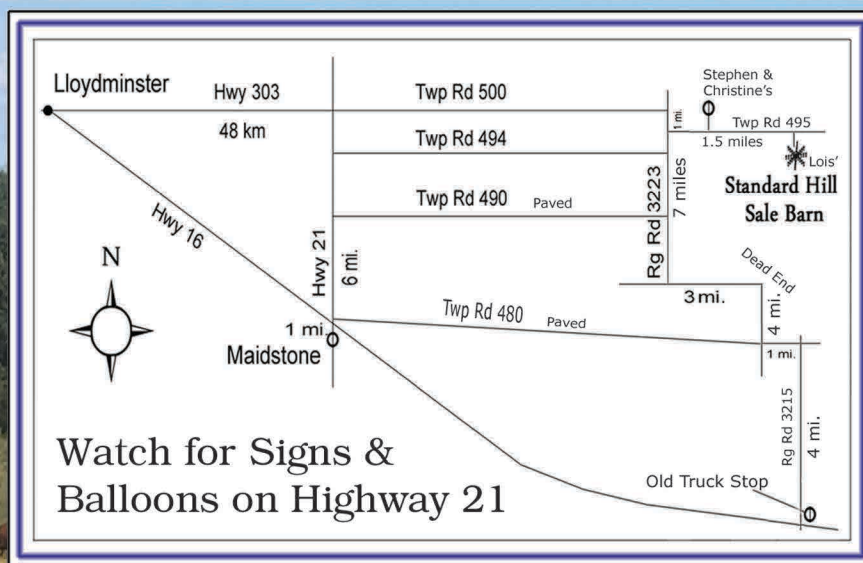
Feeding/Wintering Program: Purchases can be sent back to their home pens and remain under consignor's management until May 15th free of charge. We recommend you insure your purchases for liability reasons.

Insurance: The sellers encourage the purchasers to insure animals that remain at the seller's ranch due to liability. We can suggest an insurance agent to fulfill your needs, but there will not be a affiliated insurance provider at the sale. With that said, sellers have spare bulls.

Sight Unseen Purchases: Call the consignors to discuss what type of animal you require and your purchase price in mind. We will do our best to fill your needs. If you are not satisfied with your sight unseen purchase you will be fully refunded or you can pick another that satisfies.

All persons who attend the sale do so at their own risk.

MAP >



www.slivestock.com

*Please Bring this Catalogue
With You to the Sale*

LiveAuctions TV

Return Undeliverable Addresses to:

Standard Hill Livestock

PO Box 2227

Maidstone, SK SOM 1MO



Standard Hill

CONNECTION

Friday, March 13, 2020
2 pm MST